

# Sequestosome-1 Antibody

Rabbit Polyclonal

Antigen Affinity Purified	RefSeq ID	NP_003891.1
Catalog No. A302-856A	Uniprot ID	Q13501
Lot No. A302-856A-2	GeneID	8878

---

<b>APPLICATIONS</b>	WB, IP, IHC
<b>SPECIES REACTIVITY</b>	Human
<b>PRESUMED REACTIVITY</b>	Based on 100% sequence identity, this antibody is predicted to react with Mouse, Rat and Orangutan
<b>AMOUNT</b>	100 µl
<b>CONCENTRATION</b>	1000 µg/ml
<b>STORAGE/SHELF LIFE</b>	2 – 8°C / 1 year from date of receipt
<b>PHYSICAL STATE</b>	Liquid
<b>BUFFER</b>	Tris-citrate/phosphate buffer, pH 7 to 8 containing 0.09% Sodium Azide
<b>ISOTYPE</b>	IgG
<b>ORIGIN</b>	USA
<b>PRODUCTION PROCEDURES</b>	Antibody was affinity purified using an epitope specific to Sequestosome-1 immobilized on solid support.

The epitope recognized by A302-856A maps to a region between residue 375 and 425 of human Sequestosome-1 using the numbering given in entry NP\_003891.1 (GeneID 8878).

Antibody concentration was determined by extinction coefficient: absorbance at 280 nm of 1.4 equals 1.0 mg of IgG.

**APPLICATIONS** Centrifuge tube to remove product from lid. Optimal working dilutions should be determined experimentally by the investigator. Prepare working dilution immediately before use.

Western Blot 1:10,000 – 1:25,000

Immunoprecipitation 2 – 5 µg/mg lysate

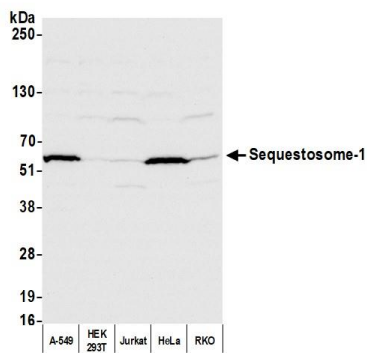
Immunohistochemistry 1:1,000 to 1:5,000. Epitope retrieval with citrate buffer pH6.0 is recommended for FFPE tissue sections.

**IHC HUMAN CONTROLS** Breast Carcinoma

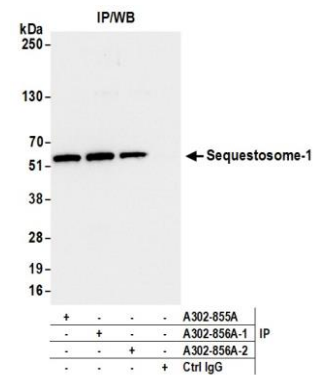
**ADDITIONAL INFO** <https://www.fortislife.com/p/A302-856A>

Use the link above to view SDS, a current list of citations, and other product specific information.

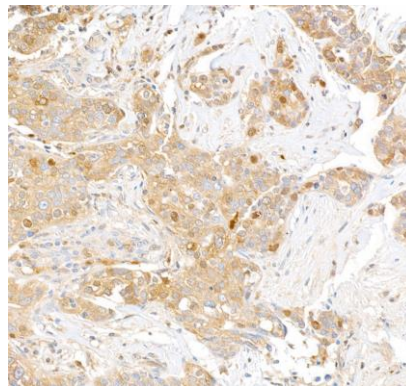
This document certifies that this product has met all of the quality control standards defined by Bethyl Laboratories, Inc.  
Michael Spencer, PhD Date: February 7, 2023



**Detection of human Sequestosome-1 by western blot.**  
*Samples:* Whole cell lysate (50 µg) from A-549, HEK293T, Jurkat, HeLa, and RKO cells prepared using NETN lysis buffer. *Antibody:* Affinity purified rabbit anti-Sequestosome-1 antibody (A302-856A lot 2) used for WB at 0.04 µg/ml. *Detection:* Chemiluminescence with an exposure time of 3 seconds.



**Detection of human Sequestosome-1 by western blot of immunoprecipitates.** *Samples:* Whole cell lysate (1.0 mg per IP reaction; 20% of IP loaded) from HeLa cells prepared using NETN lysis buffer. *Antibodies:* Affinity purified rabbit anti-Sequestosome-1 antibody (A302-856A lot 2) used for IP at 4 µg per reaction. Sequestosome-1 was also immunoprecipitated by a previous lot of this antibody (A302-856A lot 1) and a second antibody against a different epitope of Sequestosome-1 (A302-855A). For blotting immunoprecipitated Sequestosome-1, A302-856A was used at 0.04 µg/ml. *Detection:* Chemiluminescence with an exposure time of 3 seconds.



**Detection of human Sequestosome-1 by immunohistochemistry.** *Sample:* FFPE section of human breast carcinoma. *Antibody:* Affinity purified rabbit anti-Sequestosome-1 (A302-856A lot 2) used at a dilution of 1:5,000 (0.2µg/ml). *Detection:* DAB