

# Sequestosome-1 Antibody

Rabbit Polyclonal

Antigen Affinity Purified

Protein ID NP\_003891.1

Catalog No. A302-855A

GeneID 8878

Lot No. A302-855A-1



<b>APPLICATIONS</b>	WB, IP, IHC
<b>SPECIES REACTIVITY</b>	Human, Mouse
<b>PRESUMED REACTIVITY</b>	Based on 100% sequence identity, this antibody is predicted to react with Rat and Orangutan
<b>AMOUNT</b>	100 µl
<b>CONCENTRATION</b>	1000 µg/ml
<b>STORAGE/SHELF LIFE</b>	2 - 8° C / 1 year from date of receipt
<b>PHYSICAL STATE</b>	Liquid
<b>BUFFER</b>	Tris-citrate/phosphate buffer, pH 7 to 8 containing 0.09% Sodium Azide
<b>ISOTYPE</b>	IgG
<b>ORIGIN</b>	USA
<b>PRODUCTION PROCEDURES</b>	Antibody was affinity purified using an epitope specific to Sequestosome-1 immobilized on solid support.

The epitope recognized by A302-855A maps to a region between residue 325 and 375 of human Sequestosome-1 using the numbering given in entry NP\_003891.1 (GeneID 8878).

Antibody concentration was determined by extinction coefficient: absorbance at 280 nm of 1.4 equals 1.0 mg of IgG.

**APPLICATIONS** Centrifuge tube to remove product from lid. Optimal working dilutions should be determined experimentally by the investigator. Prepare working dilution immediately before use.

Western Blot 1:2,000 – 1:10,000

Immunoprecipitation 2 – 5 µg/mg lysate

Immunohistochemistry 1:500 – 1:2,000. Epitope retrieval with citrate buffer pH 6.0 is recommended for FFPE tissue sections.

**APPLICATION NOTES** Western blot of immunoprecipitates performed using Normal Pig Serum (Cat. No. S100-020), Goat anti-Rabbit Light Chain HRP Conjugate (Cat. No. A120-113P) and 4-20% SDS-PAGE (link to IP-western blot protocol in Additional Info section below).

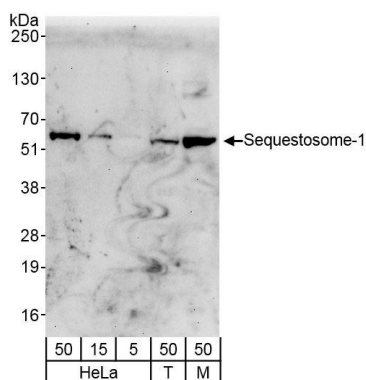
Western blot of lysates performed using standard western blot reagents and 4-20% SDS-PAGE.

**IHC HUMAN CONTROLS** Breast Carcinoma

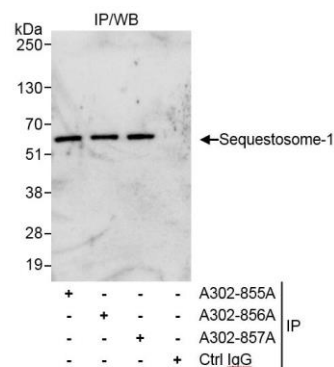
**ADDITIONAL INFO** <https://www.bethyl.com/product/A302-855A>

Use the link above to view SDS, a current list of citations, and other product specific information. IP-western blot protocol [https://www.bethyl.com/content/protocol\\_IP\\_WB](https://www.bethyl.com/content/protocol_IP_WB)

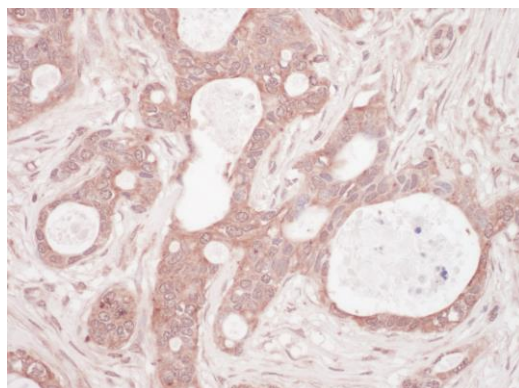
This document certifies that this product has met all of the quality control standards defined by Bethyl Laboratories, Inc.  
Eric McIntush, PhD | Chief Scientific Officer Date: November 12, 2019



**Detection of human and mouse Sequestosome-1 by western blot.** *Samples:* Whole cell lysate from HeLa (5, 15, and 50  $\mu$ g), HEK293T (T; 50  $\mu$ g), and mouse NIH 3T3 (M; 50  $\mu$ g) cells. *Antibody:* Affinity purified rabbit anti-Sequestosome-1 antibody A302-855A (lot A302-855A-1) used at 0.1  $\mu$ g/ml. *Detection:* Chemiluminescence with an exposure time of 30 seconds.



**Detection of human Sequestosome-1 by western blot of immunoprecipitates.** *Samples:* Whole cell lysate (1 mg for IP, 20% of IP loaded) from HeLa cells. *Antibodies:* Affinity purified rabbit anti-Sequestosome-1 antibody A302-855A (lot A302-855A-1) used for IP at 3  $\mu$ g/mg lysate. Sequestosome-1 was also immunoprecipitated by rabbit anti-Sequestosome-1 antibodies A302-856A and A302-857A, which recognize downstream epitopes. For blotting immunoprecipitated Sequestosome-1, A302-855A was used at 0.4  $\mu$ g/ml. *Detection:* Chemiluminescence with exposure time of 3 seconds.



**Detection of human Sequestosome-1 by immunohistochemistry.** *Sample:* FFPE section of human breast carcinoma. *Antibody:* Affinity purified rabbit anti-Sequestosome-1 (Cat. No. A302-855A Lot1) used at a dilution of 1:1,000 (1  $\mu$ g/ml). *Detection:* Vector Laboratories ImmPACT NovaRED Peroxidase Substrate