

THOC1 Antibody

Rabbit Polyclonal

Antigen Affinity Purified

Protein ID NP_005122.2

Catalog No. A302-838A

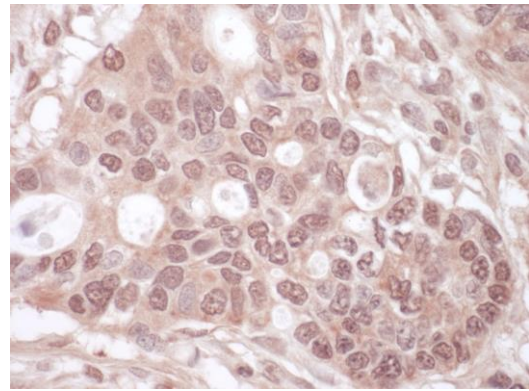
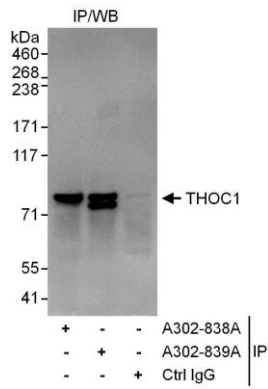
GeneID 9984

Lot No. A302-838A-1



APPLICATIONS	IP, IHC						
SPECIES REACTIVITY	Human						
AMOUNT	100 µl						
CONCENTRATION	1000 µg/ml						
STORAGE/SHELF LIFE	2 - 8° C / 1 year from date of receipt						
PHYSICAL STATE	Liquid						
BUFFER	Tris-citrate/phosphate buffer, pH 7 to 8 containing 0.09% Sodium Azide						
ISOTYPE	IgG						
ORIGIN	USA						
PRODUCTION PROCEDURES	<p>Antibody was affinity purified using an epitope specific to THOC1 immobilized on solid support.</p> <p>The epitope recognized by A302-838A maps to a region between residue 550 and 600 of human THO Complex 1 using the numbering given in entry NP_005122.2 (GeneID 9984).</p> <p>Antibody concentration was determined by extinction coefficient: absorbance at 280 nm of 1.4 equals 1.0 mg of IgG.</p>						
APPLICATIONS	<p>Centrifuge tube to remove product from lid. Optimal working dilutions should be determined experimentally by the investigator. Prepare working dilution immediately before use.</p> <table><tr><td>Western Blot</td><td>Not recommended</td></tr><tr><td>Immunoprecipitation</td><td>2 - 5 µg/mg lysate</td></tr><tr><td>Immunohistochemistry</td><td>1:500 - 1:2,000. Epitope retrieval with citrate buffer pH 6.0 is recommended for FFPE tissue sections.</td></tr></table>	Western Blot	Not recommended	Immunoprecipitation	2 - 5 µg/mg lysate	Immunohistochemistry	1:500 - 1:2,000. Epitope retrieval with citrate buffer pH 6.0 is recommended for FFPE tissue sections.
Western Blot	Not recommended						
Immunoprecipitation	2 - 5 µg/mg lysate						
Immunohistochemistry	1:500 - 1:2,000. Epitope retrieval with citrate buffer pH 6.0 is recommended for FFPE tissue sections.						
APPLICATION NOTES	Western blot of immunoprecipitates performed using Normal Pig Serum (Cat. No. S100-020), Goat anti-Rabbit Light Chain HRP Conjugate (Cat. No. A120-113P) and 4-8% SDS-PAGE (link to IP-western blot protocol in Additional Info section below).						
IHC HUMAN CONTROLS	Ovarian Carcinoma						
ADDITIONAL INFO	<p>https://www.bethyl.com/product/A302-838A</p> <p>Use the link above to view SDS, a current list of citations, and other product specific information.</p> <p>IP-western blot protocol: https://www.bethyl.com/content/protocol_IP_WB</p>						

This document certifies that this product has met all of the quality control standards defined by Bethyl Laboratories, Inc.
Eric McIntush, PhD | Chief Scientific Officer Date: June 21, 2019



Detection of human THOC1 by western blot of immunoprecipitates. *Samples:* Whole cell lysate (1 mg for IP, 20% of IP loaded) from HeLa cells. *Antibodies:* Affinity purified rabbit anti-THOC1 antibody A302-838A used for IP at 3 $\mu\text{g}/\text{mg}$ lysate. THOC1 was also immunoprecipitated by rabbit anti-THOC1 antibody A302-839A, which recognizes a downstream epitope. For blotting immunoprecipitated THOC1, A302-839A was used at 0.4 $\mu\text{g}/\text{ml}$. *Detection:* Chemiluminescence with an exposure time of 3 seconds.

Detection of human THOC1 by immunohistochemistry. *Sample:* FFPE section of human ovarian carcinoma. *Antibody:* Affinity purified rabbit anti- THOC1 (Cat. No. A302-838A Lot1) used at a dilution of 1:1,000 (1 $\mu\text{g}/\text{ml}$). *Detection:* Vector Laboratories ImmPACT NovaRED Peroxidase Substrate