

PUF60 Antibody

Rabbit Polyclonal

Antigen Affinity Purified

Protein ID NP_510965.1

Catalog No. A302-819A

GeneID 22827

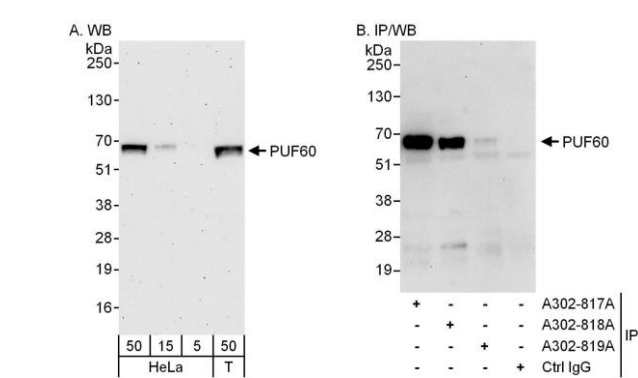
Lot No. A302-819A-1



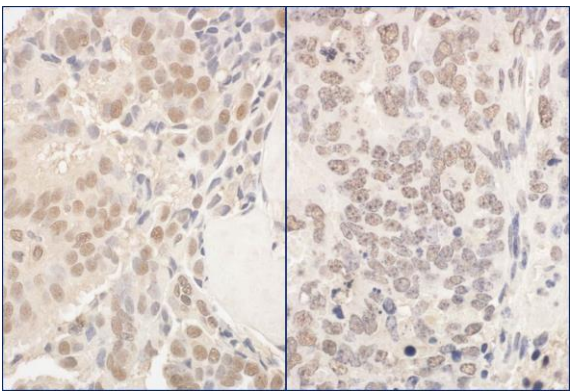
APPLICATIONS	WB, IHC						
SPECIES REACTIVITY	Human, Mouse						
PRESUMED REACTIVITY	Based on 100% sequence identity, this antibody is predicted to react with Rat, Bovine and Orangutan						
AMOUNT	100 µl						
CONCENTRATION	200 µg/ml						
STORAGE/SHELF LIFE	2 – 8° C / 1 year from date of receipt						
PHYSICAL STATE	Liquid						
BUFFER	Tris-buffered Saline containing 0.1% BSA and 0.09% Sodium Azide						
ISOTYPE	IgG						
ORIGIN	USA						
PRODUCTION PROCEDURES	<p>Antibody was affinity purified using an epitope specific to PUF60 immobilized on solid support.</p> <p>The epitope recognized by A302-819A maps to a region between residue 509 and 559 of human Poly-U Binding Splicing Factor 60KDa using the numbering given in entry NP_510965.1 (GeneID 22827).</p> <p>Antibody concentration was determined by extinction coefficient: absorbance at 280 nm of 1.4 equals 1.0 mg of IgG.</p>						
APPLICATIONS	<p>Centrifuge tube to remove product from lid. Optimal working dilutions should be determined experimentally by the investigator. Prepare working dilution immediately before use.</p> <table><tr><td>Western Blot</td><td>1:2,000 – 1:10,000</td></tr><tr><td>Immunoprecipitation</td><td>Not recommended</td></tr><tr><td>Immunohistochemistry</td><td>1:200 – 1:1,000. Epitope retrieval with citrate buffer pH 6.0 is recommended for FFPE tissue sections.</td></tr></table>	Western Blot	1:2,000 – 1:10,000	Immunoprecipitation	Not recommended	Immunohistochemistry	1:200 – 1:1,000. Epitope retrieval with citrate buffer pH 6.0 is recommended for FFPE tissue sections.
Western Blot	1:2,000 – 1:10,000						
Immunoprecipitation	Not recommended						
Immunohistochemistry	1:200 – 1:1,000. Epitope retrieval with citrate buffer pH 6.0 is recommended for FFPE tissue sections.						
APPLICATION NOTES	Western blot of lysates performed using standard western blot reagents and 4–20% SDS-PAGE.						
IHC HUMAN CONTROLS	Breast Carcinoma, Colon Carcinoma, Ovarian Carcinoma, Prostate Carcinoma						
IHC MOUSE CONTROLS	Hybridoma Tumor, Teratoma						
ADDITIONAL INFO	<p>https://www.bethyl.com/product/A302-819A</p> <p>Use the link above to view SDS, a current list of citations, and other product specific information.</p>						

This document certifies that this product has met all of the quality control standards defined by Bethyl Laboratories, Inc.
Eric McIntush, PhD | Chief Scientific Officer

Date: June 21, 2019



Detection of human PUF60 by western blot and immunoprecipitation. *Samples:* Whole cell lysate from HeLa (5, 15 and 50 µg for WB; 1 mg for IP, 20% of IP loaded) and HEK293T (T; 50 µg) cells. *Antibodies:* Affinity purified rabbit anti-PUF60 antibody A302-819A used for WB at 0.04 µg/ml (A) and 0.4 µg/ml (B) and used for IP at 3 µg/mg lysate. PUF60 was also immunoprecipitated by rabbit anti-PUF60 antibodies A302-817A and A302-818A, which recognize upstream epitopes. *Detection:* Chemiluminescence with exposure times of 3 minutes (A) and 30 seconds (B).



Detection of human and mouse PUF60 by immunohistochemistry. *Sample:* FFPE section of human prostate carcinoma (left) and mouse teratoma (right). *Antibody:* Affinity purified rabbit anti-PUF60 (Cat. No. A302-819A) used at a dilution of 1:200 (1 µg/ml) *Detection:* DAB