

ATXN7L3 Antibody

Rabbit Polyclonal

Antigen Affinity Purified

Protein ID NP_001092303.1

Catalog No. A302-800A

GeneID 56970

Lot No. A302-800A-2



APPLICATIONS	WB
SPECIES REACTIVITY	Human
PRESUMED REACTIVITY	Based on 100% sequence identity, this antibody is predicted to react with Mouse
AMOUNT	100 µl
CONCENTRATION	1000 µg/ml
STORAGE/SHELF LIFE	2 - 8° C / 1 year from date of receipt
PHYSICAL STATE	Liquid
BUFFER	Tris-citrate/phosphate buffer, pH 7 to 8 containing 0.09% Sodium Azide
ISOTYPE	IgG
ORIGIN	USA

PRODUCTION PROCEDURES Antibody was affinity purified using an epitope specific to ATXN7L3 immobilized on solid support.

The epitope recognized by A302-800A maps to a region between residue 297 and 347 of human Ataxin 7-Like 3 using the numbering given in entry NP_001092303.1 (GeneID 56970).

Antibody concentration was determined by extinction coefficient: absorbance at 280 nm of 1.4 equals 1.0 mg of IgG.

APPLICATIONS Centrifuge tube to remove product from lid. Optimal working dilutions should be determined experimentally by the investigator. Prepare working dilution immediately before use.

Western Blot 1:1,000 – 1:5,000

Immunoprecipitation Not recommended

APPLICATION NOTES Western blot of lysates performed using standard western blot reagents and 4-20% SDS-PAGE.

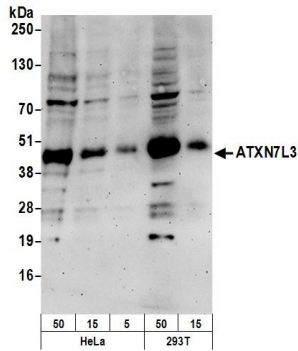
ADDITIONAL INFO <https://www.bethyl.com/product/A302-800A>

Use the link above to view SDS, a current list of citations, and other product specific information.

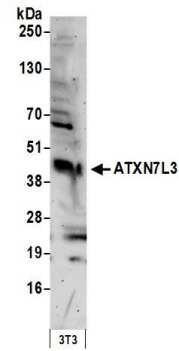
This document certifies that this product has met all of the quality control standards defined by Bethyl Laboratories, Inc.

Eric McIntush, PhD | Chief Scientific Officer

Date: June 21, 2019



Detection of human ATXN7L3 by western blot. *Samples:* Whole cell lysate from HeLa (50, 15, 5 µg) and HEK293T (50, 15 µg) cells prepared using NETN lysis buffer. *Antibody:* Affinity purified rabbit anti-ATXN7L3 antibody A302-800A (lot A302-800A-2) used for WB at 0.4 µg/ml. *Detection:* Chemiluminescence with an exposure time of 3 minutes.



Detection of mouse ATXN7L3 by western blot. *Samples:* Whole cell lysate (50 µg) from mouse NIH 3T3 cells prepared using NETN lysis buffer. *Antibody:* Affinity purified rabbit anti-ATXN7L3 antibody A302-800A (lot A302-800A-2) used for WB at 0.4 µg/ml. *Detection:* Chemiluminescence with an exposure time of 3 minutes.