

API5 Antibody

Rabbit Polyclonal

Antigen Affinity Purified

Protein ID XP_508375.2

Catalog No. A302-784A

GeneID 8539

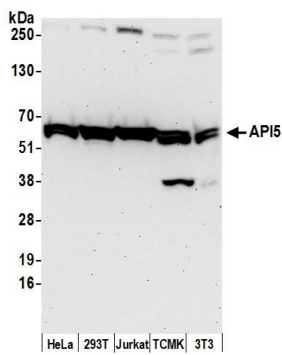
Lot No. A302-784A-2



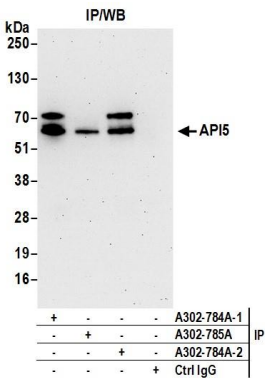
APPLICATIONS	WB, IP, IHC						
SPECIES REACTIVITY	Human, Mouse						
PRESUMED REACTIVITY	Based on 100% sequence identity, this antibody is predicted to react with X. laevis, Chicken and Orangutan						
AMOUNT	100 µl						
CONCENTRATION	200 µg/ml						
STORAGE/SHELF LIFE	2 – 8° C / 1 year from date of receipt						
PHYSICAL STATE	Liquid						
BUFFER	Tris-buffered Saline containing 0.1% BSA and 0.09% Sodium Azide						
ISOTYPE	IgG						
ORIGIN	USA						
PRODUCTION PROCEDURES	<p>Antibody was affinity purified using an epitope specific to API5 immobilized on solid support.</p> <p>The epitope recognized by A302-784A maps to a region between residue 1 and 50 of human Apoptosis Inhibitor 5 using the numbering given in entry XP_508375.2 (GeneID 8539).</p> <p>Antibody concentration was determined by extinction coefficient: absorbance at 280 nm of 1.4 equals 1.0 mg of IgG.</p>						
APPLICATIONS	<p>Centrifuge tube to remove product from lid. Optimal working dilutions should be determined experimentally by the investigator. Prepare working dilution immediately before use.</p> <table><tr><td>Western Blot</td><td>1:2,000 – 1:10,000</td></tr><tr><td>Immunoprecipitation</td><td>2 – 5 µg/mg lysate</td></tr><tr><td>Immunohistochemistry</td><td>1:100 – 1:500. Epitope retrieval with citrate buffer pH 6.0 is recommended for FFPE tissue sections.</td></tr></table>	Western Blot	1:2,000 – 1:10,000	Immunoprecipitation	2 – 5 µg/mg lysate	Immunohistochemistry	1:100 – 1:500. Epitope retrieval with citrate buffer pH 6.0 is recommended for FFPE tissue sections.
Western Blot	1:2,000 – 1:10,000						
Immunoprecipitation	2 – 5 µg/mg lysate						
Immunohistochemistry	1:100 – 1:500. Epitope retrieval with citrate buffer pH 6.0 is recommended for FFPE tissue sections.						
APPLICATION NOTES	<p>Western blot of immunoprecipitates performed using Normal Pig Serum (Cat. No. S100-020), Goat anti-Rabbit Light Chain HRP Conjugate (Cat. No. A120-113P) and 4-20% SDS-PAGE (link to IP-western blot protocol in Additional Info section below).</p> <p>Western blot of lysates performed using standard western blot reagents and 4-20% SDS-PAGE.</p>						
IHC HUMAN CONTROLS	Breast Carcinoma, Colon Carcinoma, Ovarian Carcinoma, Prostate Carcinoma						
IHC MOUSE CONTROLS	Hybridoma Tumor, Squamous Cell Carcinoma, Teratoma						
ADDITIONAL INFO	<p>https://www.bethyl.com/product/A302-784A</p> <p>Use the link above to view SDS, a current list of citations, and other product specific information.</p> <p>IP-western blot protocol: https://www.bethyl.com/content/protocol_IP_WB</p>						

This document certifies that this product has met all of the quality control standards defined by Bethyl Laboratories, Inc.
Eric McIntush, PhD | Chief Scientific Officer

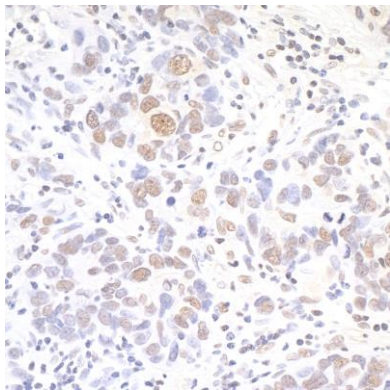
Date: June 21, 2019



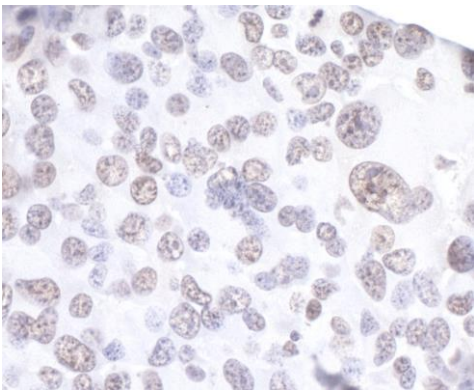
Detection of human and mouse API5 by western blot.
Samples: Whole cell lysate (50 µg) from HeLa, HEK293T, Jurkat, mouse TCMK-1, and mouse NIH 3T3 cells prepared using NETN lysis buffer. *Antibody:* Affinity purified rabbit anti-API5 antibody A302-784A (lot A302-784A-2) used for WB at 0.1 µg/ml. *Detection:* Chemiluminescence with an exposure time of 3 minutes.



Detection of human API5 by western blot of immunoprecipitates. *Samples:* Whole cell lysate (1.0 mg per IP reaction; 20% of IP loaded) from Jurkat, cells prepared using NETN lysis buffer. *Antibodies:* Affinity purified rabbit anti-API5 antibody A302-784A (lot A302-784A-2) used for IP at 3 µg per reaction. API5 was also immunoprecipitated by a previous lot of this antibody (lot A302-784A-1) and rabbit anti-API5 antibody A302-785A. For blotting immunoprecipitated API5, A302-784A was used at 1 µg/ml. *Detection:* Chemiluminescence with an exposure time of 3 minutes



Detection of human API5 by immunohistochemistry.
Sample: FFPE section of human breast carcinoma. *Antibody:* Affinity purified rabbit anti-API5 (Cat. No. A302-784A Lot2) used at 1:200 (1 µg/ml). *Detection:* DAB



Detection of mouse API5 by immunohistochemistry.
Sample: FFPE section of mouse renal cell carcinoma. *Antibody:* Affinity purified rabbit anti-API5 (Cat. No. A302-784A Lot2) used at 1:200 (1 µg/ml) *Detection:* DAB