

# MKL2 Antibody

Rabbit Polyclonal

Antigen Affinity Purified

Protein ID NP\_054767.3

Catalog No. A302-768A

GeneID 57496

Lot No. A302-768A-1



<b>APPLICATIONS</b>	WB, IP, IHC
<b>SPECIES REACTIVITY</b>	Human, Mouse
<b>AMOUNT</b>	100 $\mu$ l
<b>CONCENTRATION</b>	200 $\mu$ g/ml
<b>STORAGE/SHELF LIFE</b>	2 - 8° C / 1 year from date of receipt
<b>PHYSICAL STATE</b>	Liquid
<b>BUFFER</b>	Tris-buffered Saline containing 0.1% BSA and 0.09% Sodium Azide
<b>ISOTYPE</b>	IgG
<b>ORIGIN</b>	USA
<b>PRODUCTION PROCEDURES</b>	Antibody was affinity purified using an epitope specific to MKL2 immobilized on solid support.  The epitope recognized by A302-768A maps to a region between residue 1038 and 1088 of human Megakaryoblastic Leukemia 2 using the numbering given in entry NP_054767.3 (GeneID 57496).

Antibody concentration was determined by extinction coefficient: absorbance at 280 nm of 1.4 equals 1.0 mg of IgG.

**APPLICATIONS** Centrifuge tube to remove product from lid. Optimal working dilutions should be determined experimentally by the investigator. Prepare working dilution immediately before use.

Western Blot 1:2,000 - 1:10,000

Immunoprecipitation 2 - 5  $\mu$ g/mg lysate

Immunohistochemistry 1:200 - 1:1,000. Epitope retrieval with citrate buffer pH 6.0 is recommended for FFPE tissue sections.

**APPLICATION NOTES** Western blot of immunoprecipitates performed using Normal Pig Serum (Cat. No. S100-020), Goat anti-Rabbit Light Chain HRP Conjugate (Cat. No. A120-113P) and 4-8% SDS-PAGE (link to IP-western blot protocol in Additional Info section below).

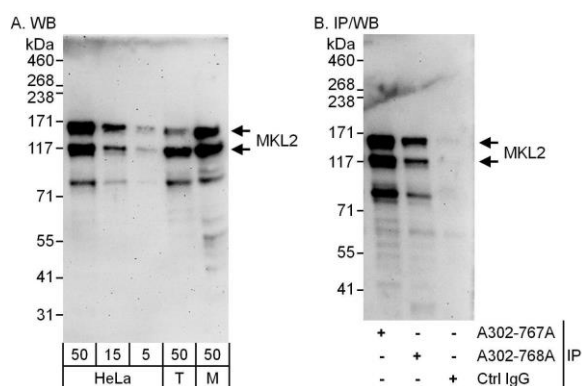
**IHC HUMAN CONTROLS** Western blot of lysates performed using standard western blot reagents and 4-8% SDS-PAGE. Linitis Plastica Stomach Cancer, Non-Small Cell Lung Cancer, Prostate Carcinoma

**ADDITIONAL INFO** <https://www.bethyl.com/product/A302-768A>

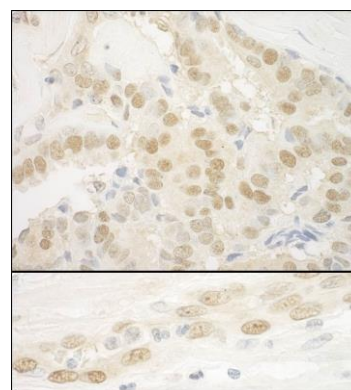
Use the link above to view SDS, a current list of citations, and other product specific information.

IP-western blot protocol: [https://www.bethyl.com/content/protocol\\_IP\\_WB](https://www.bethyl.com/content/protocol_IP_WB)

This document certifies that this product has met all of the quality control standards defined by Bethyl Laboratories, Inc.  
Eric McIntush, PhD | Chief Scientific Officer Date: June 21, 2019



**Detection of human and mouse MKL2 by western blot (h&m) and immunoprecipitation (h).** *Samples:* Whole cell lysate from HeLa (5, 15 and 50  $\mu$ g for WB; 1 mg for IP, 20% of IP loaded), HEK293T (T; 50  $\mu$ g), and mouse NIH 3T3 (M; 50  $\mu$ g) cells. *Antibodies:* Affinity purified rabbit anti-MKL2 antibody A302-768A used for WB at 0.04  $\mu$ g/ml (A) and 1  $\mu$ g/ml (B) and used for IP at 3  $\mu$ g/mg lysate. MKL2 was also immunoprecipitated by rabbit anti-MKL2 antibody A302-767A, which recognizes an upstream epitope. *Detection:* Chemiluminescence with exposure times of 10 seconds (A and B).



**Detection of human MKL2 by immunohistochemistry.** *Sample:* FFPE section of human prostate carcinoma and linitis plastica stomach cancer. *Antibody:* Affinity purified rabbit anti-MKL2 (Cat. No. A302-768A Lot1) used at a dilution of 1:200 (1  $\mu$ g/ml) and 1:1,000 (0.2  $\mu$ g/ml). *Detection:* DAB