

GMEB1 Antibody

Rabbit Polyclonal

Antigen Affinity Purified

Protein ID NP_006573.2

Catalog No. A302-766A

GeneID 10691

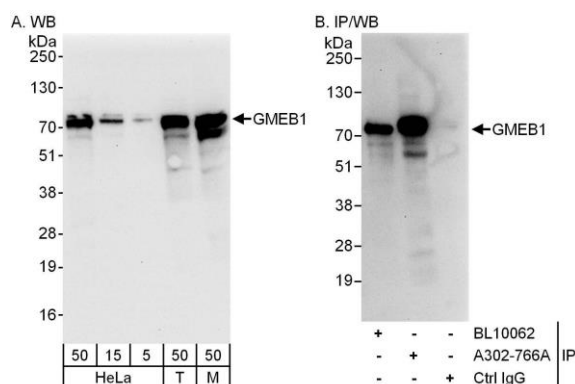
Lot No. A302-766A-1



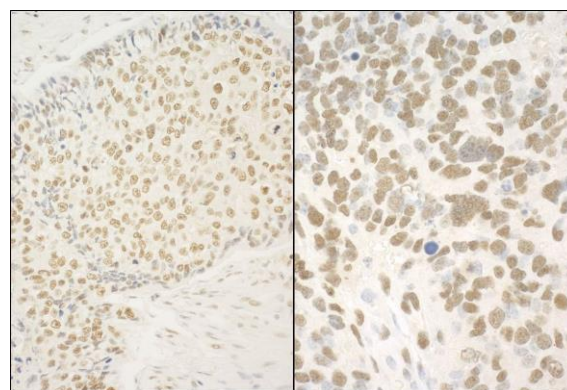
APPLICATIONS	WB, IP, IHC
SPECIES REACTIVITY	Human, Mouse
PRESUMED REACTIVITY	Based on 100% sequence identity, this antibody is predicted to react with Rat and Bovine
AMOUNT	100 µl
CONCENTRATION	200 µg/ml
STORAGE/SHELF LIFE	2 - 8° C / 1 year from date of receipt
PHYSICAL STATE	Liquid
BUFFER	Tris-buffered Saline containing 0.1% BSA and 0.09% Sodium Azide
ISOTYPE	IgG
ORIGIN	USA
PRODUCTION PROCEDURES	<p>Antibody was affinity purified using an epitope specific to GMEB1 immobilized on solid support.</p> <p>The epitope recognized by A302-766A maps to a region between residue 523 and 573 of human Glucocorticoid Modulatory Element Binding Protein 1, using the numbering given in entry NP_006573.2 (GeneID 10691).</p> <p>Antibody concentration was determined by extinction coefficient: absorbance at 280 nm of 1.4 equals 1.0 mg of IgG.</p>
APPLICATIONS	<p>Centrifuge tube to remove product from lid. Optimal working dilutions should be determined experimentally by the investigator. Prepare working dilution immediately before use.</p> <p>Western Blot 1:2,000 - 1:10,000</p> <p>Immunoprecipitation 2 - 5 µg/mg lysate</p> <p>Immunohistochemistry 1:500 - 1:2,000. Epitope retrieval with citrate buffer pH 6.0 is recommended for FFPE tissue sections.</p>
APPLICATION NOTES	<p>Western blot of immunoprecipitates performed using Normal Pig Serum (Cat. No. S100-020), Goat anti-Rabbit Light Chain HRP Conjugate (Cat. No. A120-113P) and 4-20% SDS-PAGE (link to IP-western blot protocol in Additional Info section below).</p> <p>Western blot of lysates performed using standard western blot reagents and 4-20% SDS-PAGE.</p>
IHC HUMAN CONTROLS	Breast Carcinoma, Colon Carcinoma, Non-Small Cell Lung Cancer, Ovarian Carcinoma, Prostate Carcinoma
IHC MOUSE CONTROLS	Teratoma
ADDITIONAL INFO	<p>https://www.bethyl.com/product/A302-766A</p> <p>Use the link above to view SDS, a current list of citations, and other product specific information.</p> <p>IP-western blot protocol: https://www.bethyl.com/content/protocol_IP_WB</p>

This document certifies that this product has met all of the quality control standards defined by Bethyl Laboratories, Inc.
Eric McIntush, PhD | Chief Scientific Officer

Date: June 21, 2019



Detection of human and mouse GMEB1 by western blot (h&m) and immunoprecipitation (h). *Samples:* Whole cell lysate from HeLa (5, 15 and 50 µg for WB; 1 mg for IP, 20% of IP loaded), HEK293T (T; 50 µg), and mouse NIH 3T3 (M; 50 µg) cells. *Antibodies:* Affinity purified rabbit anti-GMEB1 antibody A302-766A used for WB at 0.04 µg/ml (A) and 1 µg/ml (B) and used for IP at 3 µg/mg lysate. GMEB1 was also immunoprecipitated by rabbit anti-GMEB1 antibody BL10062, which recognizes an upstream epitope. *Detection:* Chemiluminescence with exposure times of 10 seconds (A and B).



Detection of human and mouse GMEB1 by immunohistochemistry. *Sample:* FFPE section of human lung carcinoma (left) and mouse teratoma (right). *Antibody:* Affinity purified rabbit anti-GMEB1 (Cat. No. A302-766A Lot1) used at a dilution of 1:1,000 (0.2 µg/ml). *Detection:* DAB