

PDE3B Antibody

Rabbit Polyclonal

Antigen Affinity Purified

Protein ID NP_000913.2

Catalog No. A302-742A

GeneID 5140

Lot No. A302-742A-1



APPLICATIONS	WB, IP
SPECIES REACTIVITY	Human
AMOUNT	100 µl
CONCENTRATION	1000 µg/ml
STORAGE/SHELF LIFE	2 - 8° C / 1 year from date of receipt
PHYSICAL STATE	Liquid
BUFFER	Tris-citrate/phosphate buffer, pH 7 to 8 containing 0.09% Sodium Azide
ISOTYPE	IgG
ORIGIN	USA

PRODUCTION PROCEDURES Antibody was affinity purified using an epitope specific to PDE3B immobilized on solid support.

The epitope recognized by A302-742A maps to a region between residue 500 and 550 of human Phosphodiesterase 3B using the numbering given in entry NP_000913.2 (GeneID 5140).

Antibody concentration was determined by extinction coefficient: absorbance at 280 nm of 1.4 equals 1.0 mg of IgG.

APPLICATIONS Centrifuge tube to remove product from lid. Optimal working dilutions should be determined experimentally by the investigator. Prepare working dilution immediately before use.

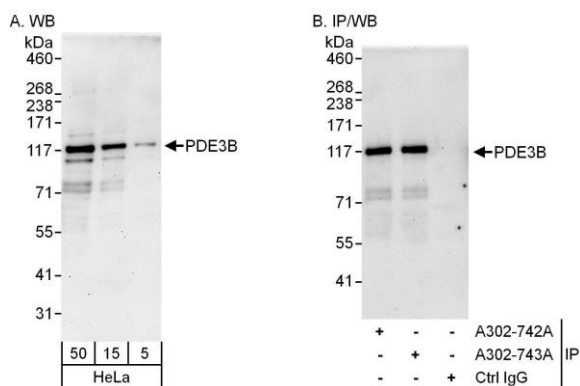
Western Blot	1:2,000 - 1:10,000
Immunoprecipitation	2 - 5 µg/mg lysate

APPLICATION NOTES Western blot of immunoprecipitates performed using Normal Pig Serum (Cat. No. S100-020), Goat anti-Rabbit Light Chain HRP Conjugate (Cat. No. A120-113P) and 4-8% SDS-PAGE (link to IP-western blot protocol in Additional Info section below).

Western blot of lysates performed using standard western blot reagents and 4-8% SDS-PAGE.

ADDITIONAL INFO <https://www.bethyl.com/product/A302-742A>
Use the link above to view SDS, a current list of citations, and other product specific information.
IP-western blot protocol: https://www.bethyl.com/content/protocol_IP_WB

This document certifies that this product has met all of the quality control standards defined by Bethyl Laboratories, Inc.
Eric McIntush, PhD | Chief Scientific Officer Date: June 21, 2019



Detection of human PDE3B by western blot and immunoprecipitation. *Samples:* Whole cell lysate (5, 15 and 50 µg for WB; 1 mg for IP, 20% of IP loaded) from HeLa cells. *Antibodies:* Affinity purified rabbit anti-PDE3B antibody A302-742A used for WB at 0.1 µg/ml (A) and 1 µg/ml (B) and used for IP at 3 µg/mg lysate. PDE3B was also immunoprecipitated by rabbit anti-PDE3B antibody A302-743A, which recognizes a downstream epitope. *Detection:* Chemiluminescence with exposure times of 3 minutes (A) and 30 seconds (B).