

ORC2 Antibody

Rabbit Polyclonal

Antigen Affinity Purified

Protein ID NP_006181.1

Catalog No. A302-735A

GeneID 4999

Lot No. A302-735A-1



APPLICATIONS	WB, IP, IHC
SPECIES REACTIVITY	Human
AMOUNT	100 µl
CONCENTRATION	200 µg/ml
STORAGE/SHELF LIFE	2 – 8° C / 1 year from date of receipt
PHYSICAL STATE	Liquid
BUFFER	Tris-buffered Saline containing 0.1% BSA and 0.09% Sodium Azide
ISOTYPE	IgG
ORIGIN	USA
PRODUCTION PROCEDURES	Antibody was affinity purified using an epitope specific to ORC2 immobilized on solid support.

The epitope recognized by A302-735A maps to a region between residue 150 and 200 of human Origin Recognition Complex, Subunit 2-like using the numbering given in entry NP_006181.1 (GeneID 4999).

Antibody concentration was determined by extinction coefficient: absorbance at 280 nm of 1.4 equals 1.0 mg of IgG.

APPLICATIONS Centrifuge tube to remove product from lid. Optimal working dilutions should be determined experimentally by the investigator. Prepare working dilution immediately before use.

Western Blot 1:2,000 – 1:10,000

Immunoprecipitation 2 – 5 µg/mg lysate

Immunohistochemistry 1:100 – 1:500. Epitope retrieval with citrate buffer pH 6.0 is recommended for FFPE tissue sections.

APPLICATION NOTES Western blot of immunoprecipitates performed using Normal Pig Serum (Cat. No. S100-020), Goat anti-Rabbit Light Chain HRP Conjugate (Cat. No. A120-113P) and 4-20% SDS-PAGE (link to IP-western blot protocol in Additional Info section below).

IHC HUMAN CONTROLS Western blot of lysates performed using standard western blot reagents and 4-20% SDS-PAGE. Breast Carcinoma, Prostate Carcinoma

ADDITIONAL INFO <https://www.bethyl.com/product/A302-735A>

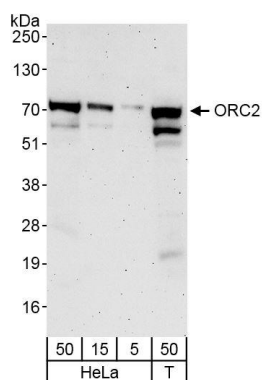
Use the link above to view SDS, a current list of citations, and other product specific information.

IP-western blot protocol https://www.bethyl.com/content/protocol_IP_WB

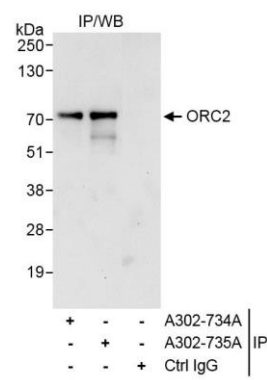
This document certifies that this product has met all of the quality control standards defined by Bethyl Laboratories, Inc.

Eric McIntush, PhD | Chief Scientific Officer

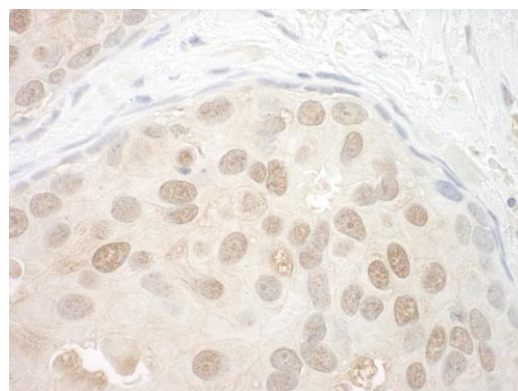
Date: November 12, 2019



Detection of human ORC2 by western blot. *Samples:* Whole cell lysate from HeLa (5, 15, and 50 μ g) and HEK293T (T; 50 μ g) cells. *Antibody:* Affinity purified rabbit anti-ORC2 antibody A302-735A (lot A302-735A-1) used at 0.04 μ g/ml. *Detection:* Chemiluminescence with an exposure time of 3 minutes.



Detection of human ORC2 by western blot of immunoprecipitates. *Samples:* Whole cell lysate (1 mg for IP, 20% of IP loaded) from HeLa cells. *Antibodies:* Affinity purified rabbit anti-ORC2 antibody A302-735A (lot A302-735A-1) used for IP at 3 μ g/mg lysate. ORC2 was also immunoprecipitated by rabbit anti-ORC2 antibody A302-734A, which recognizes an upstream epitope. For blotting immunoprecipitated ORC2, A302-735A was used at 0.4 μ g/ml. *Detection:* Chemiluminescence with exposure time of 30 seconds.



Detection of human ORC2 by immunohistochemistry. *Sample:* FFPE section of human breast carcinoma. *Antibody:* Affinity purified rabbit anti-ORC2 (Cat. No. A302-735A) used at a dilution of 1:200 (1 μ g/ml) *Detection:* DAB