

Pygo2 Antibody

Rabbit Polyclonal

Antigen Affinity Purified

Protein ID NP_612157.1

Catalog No. A302-731A

GeneID 90780

Lot No. A302-731A-1



APPLICATIONS	IP, IHC
SPECIES REACTIVITY	Human
AMOUNT	100 µl
CONCENTRATION	1000 µg/ml
STORAGE/SHELF LIFE	2 - 8° C / 1 year from date of receipt
PHYSICAL STATE	Liquid
BUFFER	Tris-citrate/phosphate buffer, pH 7 to 8 containing 0.09% Sodium Azide
ISOTYPE	IgG
ORIGIN	USA
PRODUCTION PROCEDURES	Antibody was affinity purified using an epitope specific to Pygo2 immobilized on solid support.

The epitope recognized by A302-731A maps to a region between residue 356 and 406 of human Pygopus 2 using the numbering given in entry NP_612157.1 (GeneID 90780).

Antibody concentration was determined by extinction coefficient: absorbance at 280 nm of 1.4 equals 1.0 mg of IgG.

APPLICATIONS Centrifuge tube to remove product from lid. Optimal working dilutions should be determined experimentally by the investigator. Prepare working dilution immediately before use.

Western Blot Not recommended. Use rabbit anti-Pygo2 antibody A302-730A.

Immunoprecipitation 2 - 5 µg/mg lysate

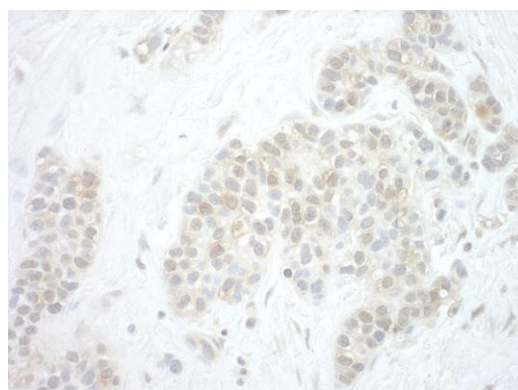
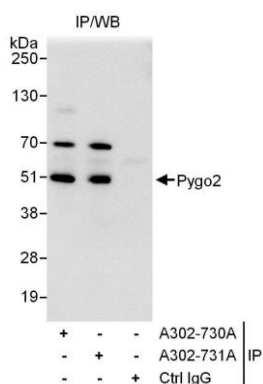
Immunohistochemistry 1:500 - 1:2,000. Epitope retrieval with citrate buffer pH 6.0 is recommended for FFPE tissue sections.

APPLICATION NOTES Western blot of immunoprecipitates performed using Normal Pig Serum (Cat. No. S100-020), Goat anti-Rabbit Light Chain HRP Conjugate (Cat. No. A120-113P) and 4-20% SDS-PAGE (link to IP-western blot protocol in Additional Info section below).

IHC HUMAN CONTROLS Breast Carcinoma

ADDITIONAL INFO <https://www.bethyl.com/product/A302-731A>
Use the link above to view SDS, a current list of citations, and other product specific information.
IP-western blot protocol: https://www.bethyl.com/content/protocol_IP_WB

This document certifies that this product has met all of the quality control standards defined by Bethyl Laboratories, Inc.
Eric McIntush, PhD | Chief Scientific Officer Date: June 21, 2019



Detection of human Pygo2 by western blot of immunoprecipitates. *Samples:* Whole cell lysate (1 mg for IP, 20% of IP loaded) from HeLa cells. *Antibodies:* Affinity purified rabbit anti-Pygo2 antibody A302-731A used for IP at 3 μ g/mg lysate. Pygo2 was also immunoprecipitated by rabbit anti-Pygo2 antibody A302-730A, which recognizes an upstream epitope. For blotting immunoprecipitated Pygo2, A302-730A was used at 0.4 μ g/ml. *Detection:* Chemiluminescence with an exposure time of 3 seconds.

Detection of human Pygo2 by immunohistochemistry. *Sample:* FFPE section of human breast carcinoma. *Antibody:* Affinity purified rabbit anti-Pygo2 (Cat. No. A302-731A) used at a dilution of 1:1,000 (1 μ g/ml) *Detection:* DAB