

NEK4 Antibody

Rabbit Polyclonal

Antigen Affinity Purified

Protein ID NP_003148.2

Catalog No. A302-672A

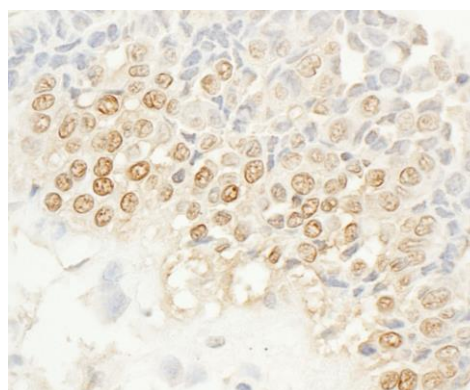
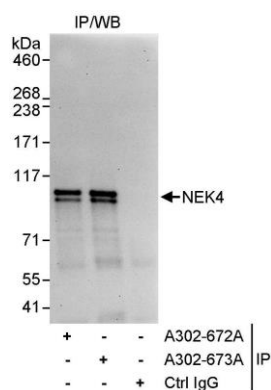
GeneID 6787

Lot No. A302-672A-1



APPLICATIONS	IP, IHC
SPECIES REACTIVITY	Human
AMOUNT	100 µl
CONCENTRATION	1000 µg/ml
STORAGE/SHELF LIFE	2 – 8° C / 1 year from date of receipt
PHYSICAL STATE	Liquid
BUFFER	Tris-citrate/phosphate buffer, pH 7 to 8 containing 0.09% Sodium Azide
ISOTYPE	IgG
ORIGIN	USA
PRODUCTION PROCEDURES	<p>Antibody was affinity purified using an epitope specific to NEK4 immobilized on solid support.</p> <p>The epitope recognized by A302-672A maps to a region between residue 350 and 400 of human NIMA (never in mitosis gene a)-related kinase 4 using the numbering given in entry NP_003148.2 (GeneID 6787).</p> <p>Antibody concentration was determined by extinction coefficient: absorbance at 280 nm of 1.4 equals 1.0 mg of IgG.</p>
APPLICATIONS	<p>Centrifuge tube to remove product from lid. Optimal working dilutions should be determined experimentally by the investigator. Prepare working dilution immediately before use.</p> <p>Western Blot Not recommended. Use rabbit anti-NEK4 antibody A302-673A.</p> <p>Immunoprecipitation 2 – 5 µg/mg lysate</p> <p>Immunohistochemistry 1:500 – 1:2,000. Epitope retrieval with citrate buffer pH 6.0 is recommended for FFPE tissue sections.</p>
APPLICATION NOTES	Western blot of immunoprecipitates performed using Normal Pig Serum (Cat. No. S100-020), Goat anti-Rabbit Light Chain HRP Conjugate (Cat. No. A120-113P) and 4-8% SDS-PAGE (link to IP-western blot protocol in Additional Info section below).
IHC HUMAN CONTROLS	Breast Carcinoma, Prostate Carcinoma
ADDITIONAL INFO	<p>https://www.bethyl.com/product/A302-672A</p> <p>Use the link above to view SDS, a current list of citations, and other product specific information.</p> <p>IP-western blot protocol: https://www.bethyl.com/content/protocol_IP_WB</p>

This document certifies that this product has met all of the quality control standards defined by Bethyl Laboratories, Inc.
Eric McIntush, PhD | Chief Scientific Officer Date: June 21, 2019



Detection of human NEK4 by western blot of immunoprecipitates. *Samples:* Whole cell lysate (1 mg for IP, 20% of IP loaded) from HeLa cells. *Antibodies:* Affinity purified rabbit anti-NEK4 antibody A302-672A used for IP at 3 μ g/mg lysate. NEK4 was also immunoprecipitated by rabbit anti-NEK4 antibody A302-673A, which recognizes a downstream epitope. For blotting immunoprecipitated NEK4, A302-673A was used at 1 μ g/ml. *Detection:* Chemiluminescence with an exposure time of 30 seconds.

Detection of human NEK4 by immunohistochemistry. *Sample:* FFPE section of human breast carcinoma. *Antibody:* Affinity purified rabbit anti-NEK4 (Cat. No. A302-672A Lot1) used at a dilution of 1:1,000 (1 μ g/ml). *Detection:* DAB