

CaMKK alpha Antibody

Rabbit Polyclonal

Antigen Affinity Purified

Protein ID NP_757343.1

Catalog No. A302-668A

GeneID 84254

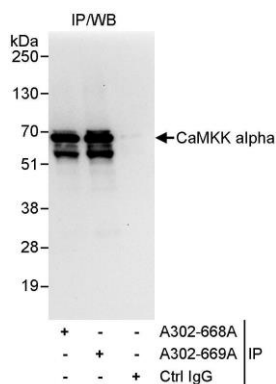
Lot No. A302-668A-1



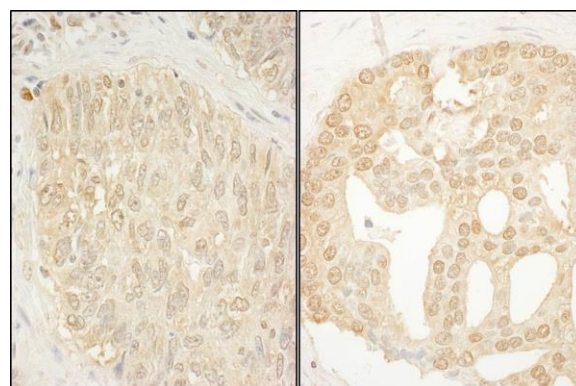
APPLICATIONS	IP, IHC
SPECIES REACTIVITY	Human
PRESUMED REACTIVITY	Based on 100% sequence identity, this antibody is predicted to react with Mouse and Rat
AMOUNT	100 µl
CONCENTRATION	1000 µg/ml
STORAGE/SHELF LIFE	2 - 8° C / 1 year from date of receipt
PHYSICAL STATE	Liquid
BUFFER	Tris-citrate/phosphate buffer, pH 7 to 8 containing 0.09% Sodium Azide
ISOTYPE	IgG
ORIGIN	USA
PRODUCTION PROCEDURES	<p>Antibody was affinity purified using an epitope specific to CaMKK alpha immobilized on solid support.</p> <p>The epitope recognized by A302-668A maps to a region between residue 150 and 200 of human calcium/calmodulin-dependent protein kinase kinase 1, alpha using the numbering given in entry NP_757343.1 (GeneID 84254).</p> <p>Antibody concentration was determined by extinction coefficient: absorbance at 280 nm of 1.4 equals 1.0 mg of IgG.</p>
APPLICATIONS	<p>Centrifuge tube to remove product from lid. Optimal working dilutions should be determined experimentally by the investigator. Prepare working dilution immediately before use.</p> <p>Western Blot Not recommended. Use rabbit anti-CaMKK alpha antibody A302-669A.</p> <p>Immunoprecipitation 2 - 5 µg/mg lysate</p> <p>Immunohistochemistry 1:500 - 1:2,000. Epitope retrieval with citrate buffer pH 6.0 is recommended for FFPE tissue sections.</p>
APPLICATION NOTES	Western blot of immunoprecipitates performed using Normal Pig Serum (Cat. No. S100-020), Goat anti-Rabbit Light Chain HRP Conjugate (Cat. No. A120-113P) and 4-20% SDS-PAGE (link to IP-western blot protocol in Additional Info section below).
IHC HUMAN CONTROLS	Prostate Carcinoma
ADDITIONAL INFO	<p>https://www.bethyl.com/product/A302-668A</p> <p>Use the link above to view SDS, a current list of citations, and other product specific information.</p> <p>IP-western blot protocol: https://www.bethyl.com/content/protocol_IP_WB</p>

This document certifies that this product has met all of the quality control standards defined by Bethyl Laboratories, Inc.
Eric McIntush, PhD | Chief Scientific Officer

Date: June 21, 2019



Detection of human CaMKK alpha by western blot of immunoprecipitates. *Samples:* Whole cell lysate (1 mg for IP, 20% of IP loaded) from HeLa cells. *Antibodies:* Affinity purified rabbit anti-CaMKK alpha antibody A302-668A used for IP at 3 µg/mg lysate. CaMKK alpha was also immunoprecipitated by rabbit anti-CaMKK alpha antibody A302-669A, which recognizes a downstream epitope. For blotting immunoprecipitated CaMKK alpha, A302-669A was used at 1 µg/ml. *Detection:* Chemiluminescence with an exposure time of 10 seconds.



Detection of human CaMKK alpha by immunohistochemistry. *Sample:* FFPE section of human lung carcinoma (left) and human prostate carcinoma (right). *Antibody:* Affinity purified rabbit anti-CaMKK alpha (Cat. No. A302-668A Lot1) used at a dilution of 1:1,000 (1 µg/ml). *Detection:* DAB