

# MTMR15 Antibody

Rabbit Polyclonal

Antigen Affinity Purified	Protein ID	NP_055782.3
Catalog No. A302-660A	GeneID	22909
Lot No. A302-660A-3		

---

<b>APPLICATIONS</b>	WB, IP, IHC
<b>SPECIES REACTIVITY</b>	Human
<b>AMOUNT</b>	100 µl
<b>CONCENTRATION</b>	200 µg/ml
<b>STORAGE/SHELF LIFE</b>	2 – 8°C / 1 year from date of receipt
<b>PHYSICAL STATE</b>	Liquid
<b>BUFFER</b>	Tris-buffered Saline containing 0.1% BSA and 0.09% Sodium Azide
<b>ISOTYPE</b>	IgG
<b>ORIGIN</b>	USA
<b>PRODUCTION PROCEDURES</b>	Antibody was affinity purified using an epitope specific to MTMR15 immobilized on solid support.

The epitope recognized by A302-660A maps to a region between residue 1 and 50 of human myotubularin related protein 15 using the numbering given in entry NP\_055782.3 (GeneID 22909).

Antibody concentration was determined by extinction coefficient: absorbance at 280 nm of 1.4 equals 1.0 mg of IgG.

**APPLICATIONS** Centrifuge tube to remove product from lid. Optimal working dilutions should be determined experimentally by the investigator. Prepare working dilution immediately before use.

Western Blot 1:2,000 – 1:10,000

Immunoprecipitation 2 – 10 µg/mg lysate

Immunohistochemistry 1:100 to 1:500. Epitope retrieval with citrate buffer pH6.0 is recommended for FFPE tissue sections.

**IHC HUMAN CONTROLS** Breast Carcinoma, Ovarian Carcinoma

**ADDITIONAL INFO** <https://www.bethyl.com/product/A302-660A>

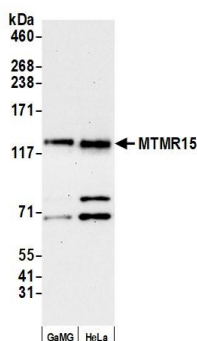
Use the link above to view SDS, a current list of citations, and other product specific information.

IP-western blot protocol: [https://www.bethyl.com/content/protocol\\_IP\\_WB](https://www.bethyl.com/content/protocol_IP_WB)

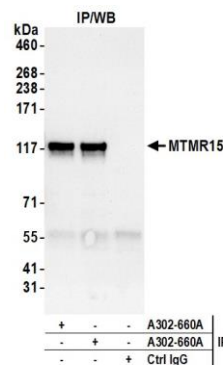
This document certifies that this product has met all of the quality control standards defined by Bethyl Laboratories, Inc.

Michael Spencer, PhD

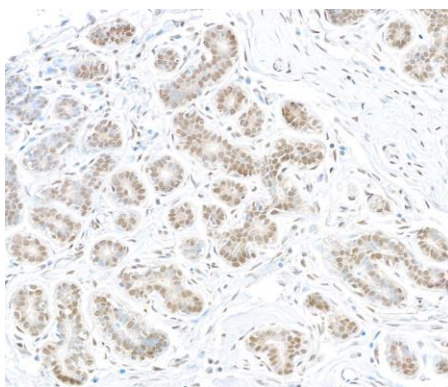
Date: March 18, 2022



**Detection of human MTMR15 by western blot.** *Samples:* Whole cell lysate (10 µg) from GaMG and HeLa cells prepared using NETN lysis buffer. *Antibody:* Affinity purified rabbit anti-MTMR15 antibody (A302-660A lot 3) used for WB at 0.04 µg/ml. *Detection:* Chemiluminescence with an exposure time of 30 seconds.



**Detection of human MTMR15 by western blot of immunoprecipitates.** *Samples:* Whole cell lysate (1.0 mg per IP reaction; 5% of IP loaded) from HeLa cells prepared using NETN lysis buffer. *Antibodies:* Affinity purified rabbit anti-MTMR15 antibody (A302-660A lot 3) used for IP at 6 µg per reaction. MTMR15 was also immunoprecipitated by a previous lot of this antibody (A302-660A lot 2). For blotting immunoprecipitated MTMR15, A302-660A was used at 0.04 µg/ml. *Detection:* Chemiluminescence with an exposure time of 10 seconds.



**Detection of human MTMR15 by immunohistochemistry.**  
*Sample:* FFPE section of human breast carcinoma.  
*Antibody:* Affinity purified rabbit anti-MTMR15 (A302-660A lot 3) used at a dilution of 1:200 (1 µg/ml).  
*Detection:* DAB