

# SPIN90 Antibody

Rabbit Polyclonal

Antigen Affinity Purified

Protein ID NP\_057537.1

Catalog No. A302-647A

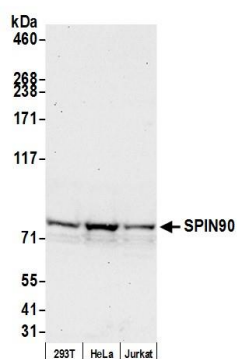
GeneID 51517

Lot No. A302-647A-3

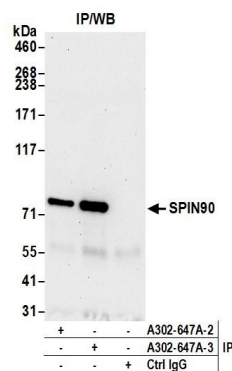


<b>APPLICATIONS</b>	WB, IP, IHC						
<b>SPECIES REACTIVITY</b>	Human						
<b>AMOUNT</b>	100 µl						
<b>CONCENTRATION</b>	200 µg/ml						
<b>STORAGE/SHELF LIFE</b>	2 – 8° C / 1 year from date of receipt						
<b>PHYSICAL STATE</b>	Liquid						
<b>BUFFER</b>	Tris-buffered Saline containing 0.1% BSA and 0.09% Sodium Azide						
<b>ISOTYPE</b>	IgG						
<b>ORIGIN</b>	USA						
<b>PRODUCTION PROCEDURES</b>	<p>Antibody was affinity purified using an epitope specific to SPIN90 immobilized on solid support.</p> <p>The epitope recognized by A302-647A maps to a region between residue 672 and 722 of human SH3 protein interacting with Nck, 90 kDa using the numbering given in entry NP_057537.1 (GeneID 51517).</p> <p>Antibody concentration was determined by extinction coefficient: absorbance at 280 nm of 1.4 equals 1.0 mg of IgG.</p>						
<b>APPLICATIONS</b>	<p>Centrifuge tube to remove product from lid. Optimal working dilutions should be determined experimentally by the investigator. Prepare working dilution immediately before use.</p> <table><tr><td>Western Blot</td><td>1:2,000 – 1:10,000</td></tr><tr><td>Immunoprecipitation</td><td>2 – 10 µg/mg lysate</td></tr><tr><td>Immunohistochemistry</td><td>1:200 – 1:1,000. Epitope retrieval with citrate buffer pH 6.0 is recommended for FFPE tissue sections.</td></tr></table>	Western Blot	1:2,000 – 1:10,000	Immunoprecipitation	2 – 10 µg/mg lysate	Immunohistochemistry	1:200 – 1:1,000. Epitope retrieval with citrate buffer pH 6.0 is recommended for FFPE tissue sections.
Western Blot	1:2,000 – 1:10,000						
Immunoprecipitation	2 – 10 µg/mg lysate						
Immunohistochemistry	1:200 – 1:1,000. Epitope retrieval with citrate buffer pH 6.0 is recommended for FFPE tissue sections.						
<b>APPLICATION NOTES</b>	<p>Western blot of immunoprecipitates performed using Normal Pig Serum (Cat. No. S100-020), Goat anti-Rabbit Light Chain HRP Conjugate (Cat. No. A120-113P) and 4-8% SDS-PAGE (link to IP-western blot protocol in Additional Info section below).</p> <p>Western blot of lysates performed using standard western blot reagents and 4-8% SDS-PAGE.</p>						
<b>IHC HUMAN CONTROLS</b>	Breast Carcinoma, Osteosarcoma, Prostate Carcinoma, Testicular Seminoma						
<b>ADDITIONAL INFO</b>	<p><a href="https://www.bethyl.com/product/A302-647A">https://www.bethyl.com/product/A302-647A</a></p> <p>Use the link above to view SDS, a current list of citations, and other product specific information. IP-western blot protocol <a href="https://www.bethyl.com/content/protocol_IP_WB">https://www.bethyl.com/content/protocol_IP_WB</a></p>						

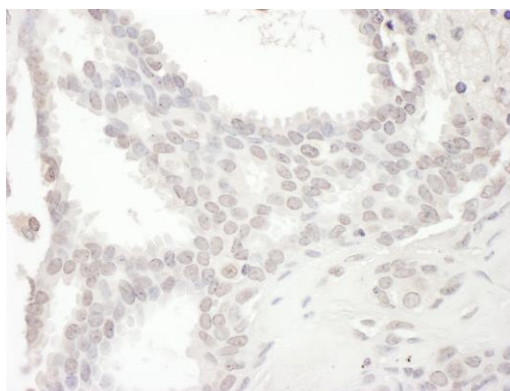
This document certifies that this product has met all of the quality control standards defined by Bethyl Laboratories, Inc.  
Eric McIntush, PhD | Chief Scientific Officer Date: December 12, 2019



**Detection of human SPIN90 by western blot.** *Samples:* Whole cell lysate (50  $\mu$ g) from HEK293T, HeLa, and Jurkat cells prepared using NETN lysis buffer. *Antibody:* Affinity purified rabbit anti-SPIN90 antibody A302-647A (lot A302-647A-3) used for WB at 0.1  $\mu$ g/ml. *Detection:* Chemiluminescence with an exposure time of 30 seconds.



**Detection of human SPIN90 by western blot of immunoprecipitates.** *Samples:* Whole cell lysate (1.0 mg per IP reaction; 20% of IP loaded) from HeLa cells prepared using NETN lysis buffer. *Antibodies:* Affinity purified rabbit anti-SPIN90 antibody A302-647A (lot A302-647A-3) used for IP at 6  $\mu$ g per reaction. SPIN90 was also immunoprecipitated by a previous lot of this antibody (lot A302-647A-2). For blotting immunoprecipitated SPIN90, A302-647A was used at 0.1  $\mu$ g/ml. *Detection:* Chemiluminescence with an exposure time of 30 seconds.



**Detection of human SPIN90 by immunohistochemistry.**  
*Sample:* FFPE section of human breast carcinoma.  
*Antibody:* Affinity purified rabbit anti-SPIN90 (Cat. No. A302-647A Lot2) used at a dilution of 1:500 (0.4  $\mu$ g/ml).  
*Detection:* DAB