

ZCCHC11 Antibody

Rabbit Polyclonal

Antigen Affinity Purified

Protein ID NP_056084.1

Catalog No. A302-636A

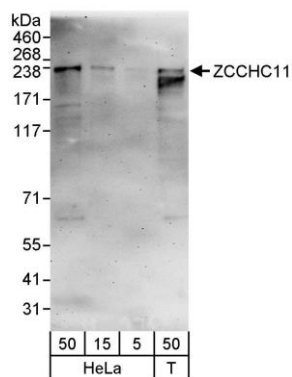
GeneID 23318

Lot No. A302-636A-1



APPLICATIONS	WB				
SPECIES REACTIVITY	Human				
PRESUMED REACTIVITY	Based on 100% sequence identity, this antibody is predicted to react with Mouse				
AMOUNT	100 µl				
CONCENTRATION	200 µg/ml				
STORAGE/SHELF LIFE	2 - 8° C / 1 year from date of receipt				
PHYSICAL STATE	Liquid				
BUFFER	Tris-buffered Saline containing 0.1% BSA and 0.09% Sodium Azide				
ISOTYPE	IgG				
ORIGIN	USA				
PRODUCTION PROCEDURES	<p>Antibody was affinity purified using an epitope specific to ZCCHC11 immobilized on solid support.</p> <p>The epitope recognized by A302-636A maps to a region between residue 250 and 300 of human zinc finger, CCHC domain containing 11 using the numbering given in entry NP_056084.1 (GeneID 23318).</p> <p>Antibody concentration was determined by extinction coefficient: absorbance at 280 nm of 1.4 equals 1.0 mg of IgG.</p>				
APPLICATIONS	<p>Centrifuge tube to remove product from lid. Optimal working dilutions should be determined experimentally by the investigator. Prepare working dilution immediately before use.</p> <table><tr><td>Western Blot</td><td>1:2,000 – 1:10,000</td></tr><tr><td>Immunoprecipitation</td><td>Not recommended. In an initial assessment, ZCCHC11 did not appear to be efficiently immunoprecipitated when using this antibody.</td></tr></table>	Western Blot	1:2,000 – 1:10,000	Immunoprecipitation	Not recommended. In an initial assessment, ZCCHC11 did not appear to be efficiently immunoprecipitated when using this antibody.
Western Blot	1:2,000 – 1:10,000				
Immunoprecipitation	Not recommended. In an initial assessment, ZCCHC11 did not appear to be efficiently immunoprecipitated when using this antibody.				
APPLICATION NOTES	Western blot of lysates performed using standard western blot reagents and 4-8% SDS-PAGE.				
IHC HUMAN CONTROLS	Prostate Carcinoma				
ADDITIONAL INFO	<p>https://www.bethyl.com/product/A302-636A</p> <p>Use the link above to view SDS, a current list of citations, and other product specific information.</p>				

This document certifies that this product has met all of the quality control standards defined by Bethyl Laboratories, Inc.
Eric McIntush, PhD | Chief Scientific Officer Date: June 21, 2019



Detection of human ZCCHC11 by western blot. *Samples:* Whole cell lysate from HeLa (5, 15 and 50 µg) and HEK293T (T; 50 µg) cells. *Antibodies:* Affinity purified rabbit anti-ZCCHC11 antibody A302-636A used for WB at 0.04 µg/ml. *Detection:* Chemiluminescence with an exposure time of 3 minutes.