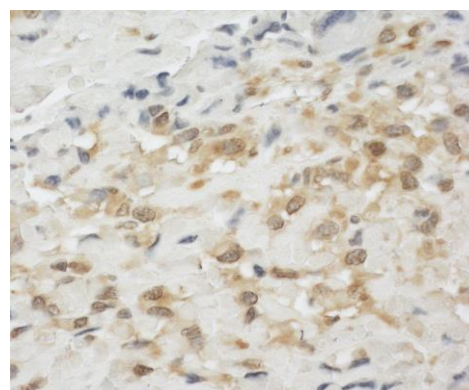


Detection of human LPP by western blot and immunoprecipitation. *Samples:* Whole cell lysate from HeLa (5, 15 and 50 µg for WB; 1 mg for IP, 20% of IP loaded) and HEK293T (T; 50 µg) cells. *Antibodies:* Affinity purified rabbit anti-LPP antibody A302-634A used for WB at 0.04 µg/ml (A) and 0.4 µg/ml (B) and used for IP at 3 µg/mg lysate. LPP was also immunoprecipitated by rabbit anti-LPP antibody BL9595, which recognizes a downstream epitope. *Detection:* Chemiluminescence with exposure times of 3 minutes (A) and 30 seconds (B).



Detection of human LPP by immunohistochemistry. *Sample:* FFPE section of human osteosarcoma. *Antibody:* Affinity purified rabbit anti-LPP (Cat. No. A302-634A Lot1) used at a dilution of 1:200 (1 µg/ml). *Detection:* DAB