

# WDR11 Antibody

Rabbit Polyclonal

Antigen Affinity Purified

Catalog No. A302-632A

Lot No. A302-632A-1

Protein ID NP\_060587.8

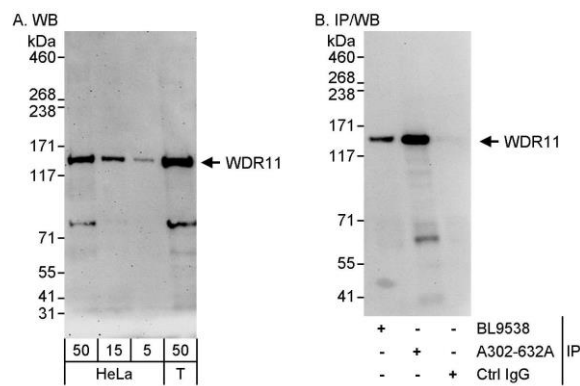
GeneID 55717



|                              |  |
|------------------------------|--|
| <b>APPLICATIONS</b>          | WB, IP   |
| <b>SPECIES REACTIVITY</b>    | Human  |
| <b>AMOUNT</b>                | 100 µl   |
| <b>CONCENTRATION</b>         | 200 µg/ml  |
| <b>STORAGE/SHELF LIFE</b>    | 2 – 8° C / 1 year from date of receipt   |
| <b>PHYSICAL STATE</b>        | Liquid   |
| <b>BUFFER</b>                | Tris-buffered Saline containing 0.1% BSA and 0.09% Sodium Azide  |
| <b>ISOTYPE</b>               | IgG  |
| <b>ORIGIN</b>                | USA  |
| <b>PRODUCTION PROCEDURES</b> | <p>Antibody was affinity purified using an epitope specific to WDR11 immobilized on solid support.</p> <p>The epitope recognized by A302-632A maps to a region between residue 1174 and 1224 of human WD repeat domain 11 using the numbering given in entry NP_060587.8 (GeneID 55717).</p> <p>Antibody concentration was determined by extinction coefficient: absorbance at 280 nm of 1.4 equals 1.0 mg of IgG.</p> |
| <b>APPLICATIONS</b>          | <p>Centrifuge tube to remove product from lid. Optimal working dilutions should be determined experimentally by the investigator. Prepare working dilution immediately before use.</p> <p>Western Blot 1:2,000 – 1:10,000</p> <p>Immunoprecipitation 2 – 5 µg/mg lysate</p>  |
| <b>APPLICATION NOTES</b>     | <p>Western blot of immunoprecipitates performed using Normal Pig Serum (Cat. No. S100-020), Goat anti-Rabbit Light Chain HRP Conjugate (Cat. No. A120-113P) and 4-8% SDS-PAGE (link to IP-western blot protocol in Additional Info section below).</p> <p>Western blot of lysates performed using standard western blot reagents and 4-8% SDS-PAGE.</p>  |
| <b>ADDITIONAL INFO</b>       | <p><a href="https://www.bethyl.com/product/A302-632A">https://www.bethyl.com/product/A302-632A</a></p> <p>Use the link above to view SDS, a current list of citations, and other product specific information.</p> <p>IP-western blot protocol: <a href="https://www.bethyl.com/content/protocol_IP_WB">https://www.bethyl.com/content/protocol_IP_WB</a></p>  |

This document certifies that this product has met all of the quality control standards defined by Bethyl Laboratories, Inc.  
Eric McIntush, PhD | Chief Scientific Officer

Date: June 21, 2019



**Detection of human WDR11 by western blot and immunoprecipitation.** *Samples:* Whole cell lysate from HeLa (5, 15 and 50 µg for WB; 1 mg for IP, 20% of IP loaded) and HEK293T (T; 50 µg) cells. *Antibodies:* Affinity purified rabbit anti-WDR11 antibody A302-632A used for WB at 0.04 µg/ml (A) and 1 µg/ml (B) and used for IP at 3 µg/mg lysate. WDR11 was also immunoprecipitated by rabbit anti-WDR11 antibody BL9538, which recognizes an upstream epitope. *Detection:* Chemiluminescence with exposure times of 3 minutes (A) and 10 seconds (B).