

# Gamma-Tubulin Antibody

Rabbit Polyclonal

Antigen Affinity Purified

Protein ID NP\_001061.2

Catalog No. A302-631A

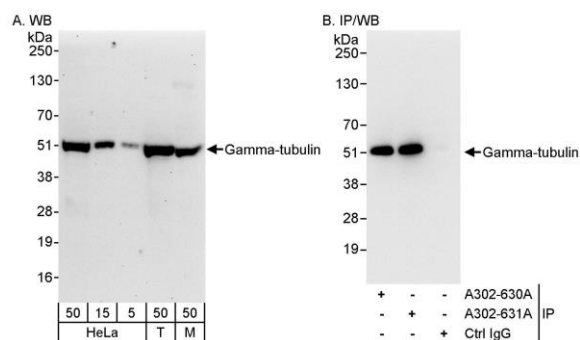
GeneID 7283

Lot No. A302-631A-1



<b>APPLICATIONS</b>	WB, IP
<b>SPECIES REACTIVITY</b>	Human, Mouse
<b>PRESUMED REACTIVITY</b>	Based on 100% sequence identity, this antibody is predicted to react with Rat and Bovine
<b>AMOUNT</b>	100 µl
<b>CONCENTRATION</b>	200 µg/ml
<b>STORAGE/SHELF LIFE</b>	2 - 8° C / 1 year from date of receipt
<b>PHYSICAL STATE</b>	Liquid
<b>BUFFER</b>	Tris-buffered Saline containing 0.1% BSA and 0.09% Sodium Azide
<b>ISOTYPE</b>	IgG
<b>ORIGIN</b>	USA
<b>PRODUCTION PROCEDURES</b>	<p>Antibody was affinity purified using an epitope specific to Gamma-Tubulin immobilized on solid support.</p> <p>The epitope recognized by A302-631A maps to a region between residue 401 and 451 of human Gamma-Tubulin using the numbering given in entry NP_001061.2 (GeneID 7283). The epitope is conserved in Gamma 2 Tubulin (GeneID 27175).</p> <p>Antibody concentration was determined by extinction coefficient: absorbance at 280 nm of 1.4 equals 1.0 mg of IgG.</p>
<b>APPLICATIONS</b>	<p>Centrifuge tube to remove product from lid. Optimal working dilutions should be determined experimentally by the investigator. Prepare working dilution immediately before use.</p> <p>Western Blot                      1:2,000 - 1:10,000</p> <p>Immunoprecipitation            2 - 5 µg/mg lysate</p>
<b>APPLICATION NOTES</b>	<p>Western blot of immunoprecipitates performed using Normal Pig Serum (Cat. No. S100-020), Goat anti-Rabbit Light Chain HRP Conjugate (Cat. No. A120-113P) and 4-20% SDS-PAGE (link to IP-western blot protocol in Additional Info section below).</p> <p>Western blot of lysates performed using standard western blot reagents and 4-20% SDS-PAGE.</p>
<b>ADDITIONAL INFO</b>	<p><a href="https://www.bethyl.com/product/A302-631A">https://www.bethyl.com/product/A302-631A</a></p> <p>Use the link above to view SDS, a current list of citations, and other product specific information.</p> <p>IP-western blot protocol: <a href="https://www.bethyl.com/content/protocol_IP_WB">https://www.bethyl.com/content/protocol_IP_WB</a></p>

This document certifies that this product has met all of the quality control standards defined by Bethyl Laboratories, Inc.  
Eric McIntush, PhD | Chief Scientific Officer Date: June 21, 2019



**Detection of human and mouse Gamma-tubulin by western blot (h & m) and immunoprecipitation (h).**

*Samples:* Whole cell lysate from HeLa (5, 15 and 50  $\mu$ g for WB; 1 mg for IP, 20% of IP loaded), HEK293T (T; 50  $\mu$ g), and mouse NIH 3T3 (T; 50  $\mu$ g) cells. *Antibodies:* Affinity purified rabbit anti-Gamma-tubulin antibody A302-631A used for WB at 0.04  $\mu$ g/ml (A) and 0.4  $\mu$ g/ml (B) and used for IP at 3  $\mu$ g/mg lysate. Gamma-tubulin was also immunoprecipitated by rabbit anti-Gamma-tubulin antibody A302-630A, which recognizes an upstream epitope. *Detection:* Chemiluminescence with exposure times of 30 seconds (A) and 3 seconds (B).