

# TFE3 Antibody

Rabbit Polyclonal

Antigen Affinity Purified

Protein ID NP\_006512.2

Catalog No. A302-622A

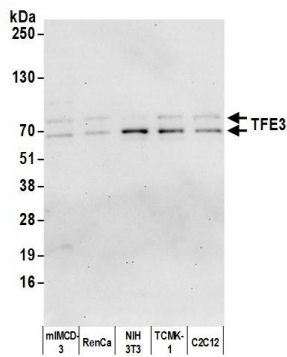
GeneID 7030

Lot No. A302-622A-3



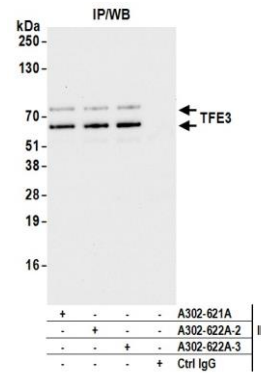
<b>APPLICATIONS</b>	WB, IP
<b>SPECIES REACTIVITY</b>	Human, Mouse
<b>PRESUMED REACTIVITY</b>	Based on 100% sequence identity, this antibody is predicted to react with Bovine
<b>AMOUNT</b>	100 µl
<b>CONCENTRATION</b>	200 µg/ml
<b>STORAGE/SHELF LIFE</b>	2 – 8° C / 1 year from date of receipt
<b>PHYSICAL STATE</b>	Liquid
<b>BUFFER</b>	Tris-buffered Saline containing 0.1% BSA and 0.09% Sodium Azide
<b>ISOTYPE</b>	IgG
<b>ORIGIN</b>	USA
<b>PRODUCTION PROCEDURES</b>	<p>Antibody was affinity purified using an epitope specific to TFE3 immobilized on solid support.</p> <p>The epitope recognized by A302-622A maps to a region between residue 500 and 550 of human transcription factor binding to IGHM enhancer 3 using the numbering given in entry NP_006512.2 (GeneID 7030).</p> <p>Antibody concentration was determined by extinction coefficient: absorbance at 280 nm of 1.4 equals 1.0 mg of IgG.</p>
<b>APPLICATIONS</b>	<p>Centrifuge tube to remove product from lid. Optimal working dilutions should be determined experimentally by the investigator. Prepare working dilution immediately before use.</p> <p>Western Blot                      1:2,000 – 1:10,000</p> <p>Immunoprecipitation          2 – 10 µg/mg lysate</p>
<b>APPLICATION NOTES</b>	<p>Western blot of immunoprecipitates performed using Normal Pig Serum (Cat. No. S100-020), Goat anti-Rabbit Light Chain HRP Conjugate (Cat. No. A120-113P) and 4-20% SDS-PAGE (link to IP-western blot protocol in Additional Info section below).</p> <p>Western blot of lysates performed using standard western blot reagents and 4-20% SDS-PAGE.</p>
<b>ADDITIONAL INFO</b>	<p><a href="https://www.bethyl.com/product/A302-622A">https://www.bethyl.com/product/A302-622A</a></p> <p>Use the link above to view SDS, a current list of citations, and other product specific information. IP-western blot protocol <a href="https://www.bethyl.com/content/protocol_IP_WB">https://www.bethyl.com/content/protocol_IP_WB</a></p>

This document certifies that this product has met all of the quality control standards defined by Bethyl Laboratories, Inc.  
Eric McIntush, PhD | Chief Scientific Officer Date: September 30, 2019



#### Detection of human and mouse TFE3 by western blot.

**Samples:** Whole cell lysate (10 µg) from mIMCD-3, RenCa, NIH 3T3, TCMK-1, and C2C12 cells prepared using NETN lysis buffer. **Antibody:** Affinity purified rabbit anti-TFE3 antibody A302-622A (lot A302-622A-3) used for WB at 0.04 µg/ml. **Detection:** Chemiluminescence with an exposure time of 30 seconds.



#### Detection of human TFE3 by western blot of immunoprecipitates.

**Samples:** Whole cell lysate (1.0 mg per IP reaction; 20% of IP loaded) from A-549 cells prepared using NETN lysis buffer. **Antibodies:** Affinity purified rabbit anti-TFE3 antibody A302-622A (lot A302-622A-3) used for IP at 6 µg per reaction. TFE3 was also immunoprecipitated by a previous lot of this antibody (lot A302-622A-2) and rabbit anti-TFE3 antibody A302-621A. For blotting immunoprecipitated TFE3, A302-622A was used at 0.04 µg/ml. **Detection:** Chemiluminescence with an exposure time of 10 seconds.