

FKBP3 Antibody

Rabbit Polyclonal

Antigen Affinity Purified

Protein ID NP_002004.1

Catalog No. A302-601A

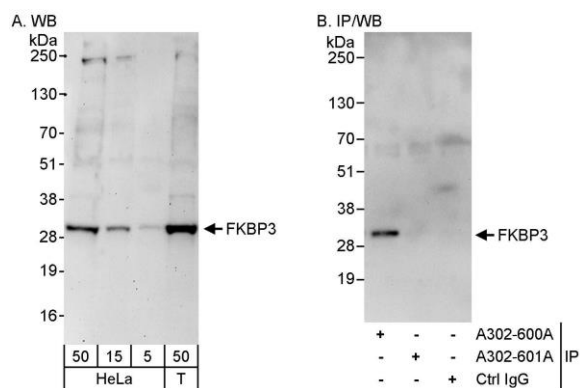
GeneID 2287

Lot No. A302-601A-1



APPLICATIONS	WB
SPECIES REACTIVITY	Human
PRESUMED REACTIVITY	Based on 100% sequence identity, this antibody is predicted to react with Mouse, Bovine and Rabbit
AMOUNT	100 µl
CONCENTRATION	200 µg/ml
STORAGE/SHELF LIFE	2 - 8° C / 1 year from date of receipt
PHYSICAL STATE	Liquid
BUFFER	Tris-buffered Saline containing 0.1% BSA and 0.09% Sodium Azide
ISOTYPE	IgG
ORIGIN	USA
PRODUCTION PROCEDURES	<p>Antibody was affinity purified using an epitope specific to FKBP3 immobilized on solid support.</p> <p>The epitope recognized by A302-601A maps to a region between residue 100 and 150 of human FK506 binding protein 3 using the numbering given in entry NP_002004.1 (GeneID 2287).</p> <p>Antibody concentration was determined by extinction coefficient: absorbance at 280 nm of 1.4 equals 1.0 mg of IgG.</p>
APPLICATIONS	<p>Centrifuge tube to remove product from lid. Optimal working dilutions should be determined experimentally by the investigator. Prepare working dilution immediately before use.</p> <p>Western Blot 1:2,000 – 1:10,000</p> <p>Immunoprecipitation Not recommended. Use rabbit anti-FKBP3 antibody A302-600A.</p>
APPLICATION NOTES	Western blot of lysates performed using standard western blot reagents and 4-20% SDS-PAGE.
ADDITIONAL INFO	<p>https://www.bethyl.com/product/A302-601A</p> <p>Use the link above to view SDS, a current list of citations, and other product specific information.</p>

This document certifies that this product has met all of the quality control standards defined by Bethyl Laboratories, Inc.
Eric McIntush, PhD | Chief Scientific Officer Date: June 21, 2019



Detection of human FKBP3 by western blot and immunoprecipitation.

Samples: Whole cell lysate from HeLa (5, 15 and 50 μ g for WB; 1 mg for IP, 20% of IP loaded) and HEK293T (T; 50 μ g) cells. **Antibodies:** Affinity purified rabbit anti-FKBP3 antibody A302-601A used for WB at 0.04 μ g/ml (A) and 1 μ g/ml (B) and used for IP at 3 μ g/mg lysate. FKBP3 was successfully immunoprecipitated by rabbit anti-FKBP3 antibody A302-600A, which recognizes an upstream epitope. **Detection:** Chemiluminescence with exposure times of 3 minutes (A) and 30 seconds (B).