

# TOP1 Antibody

Rabbit Polyclonal

Antigen Affinity Purified

Protein ID NP\_003277.1

Catalog No. A302-590A

GeneID 7150

Lot No. A302-590A-3



**APPLICATIONS** WB, IP

**SPECIES REACTIVITY** Human, Mouse

**AMOUNT** 100 µl

**CONCENTRATION** 1000 µg/ml

**STORAGE/SHELF LIFE** 2 – 8° C / 1 year from date of receipt

**PHYSICAL STATE** Liquid

**BUFFER** Tris-citrate/phosphate buffer, pH 7 to 8 containing 0.09% Sodium Azide

**ISOTYPE** IgG

**ORIGIN** USA

**PRODUCTION PROCEDURES** Antibody was affinity purified using an epitope specific to TOP1 immobilized on solid support.

The epitope recognized by A302-590A maps to a region between residue 715 and 765 of human DNA topoisomerase I using the numbering given in entry NP\_003277.1 (GeneID 7150).

Antibody concentration was determined by extinction coefficient: absorbance at 280 nm of 1.4 equals 1.0 mg of IgG.

**APPLICATIONS** Centrifuge tube to remove product from lid. Optimal working dilutions should be determined experimentally by the investigator. Prepare working dilution immediately before use.

Western Blot 1:2,000 – 1:10,000

Immunoprecipitation 2 – 10 µg/mg lysate

**APPLICATION NOTES** Western blot of immunoprecipitates performed using Normal Pig Serum (Cat. No. S100-020), Goat anti-Rabbit Light Chain HRP Conjugate (Cat. No. A120-113P) and 4-8% SDS-PAGE (link to IP-western blot protocol in Additional Info section below).

Western blot of lysates performed using standard western blot reagents and 4-8% SDS-PAGE.

**ADDITIONAL INFO** <https://www.bethyl.com/product/A302-590A>

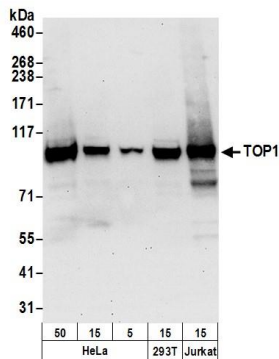
Use the link above to view SDS, a current list of citations, and other product specific information.

IP-western blot protocol: [https://www.bethyl.com/content/protocol\\_IP\\_WB](https://www.bethyl.com/content/protocol_IP_WB)

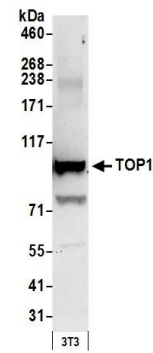
This document certifies that this product has met all of the quality control standards defined by Bethyl Laboratories, Inc.

Eric McIntush, PhD | Chief Scientific Officer

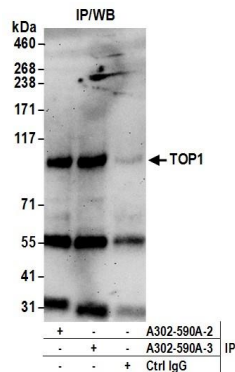
Date: June 21, 2019



**Detection of human TOP1 by western blot.** *Samples:* Whole cell lysate (50, 15, 5 µg) from HeLa and (50 µg) from HEK293T and Jurkat cells prepared using NETN lysis buffer. *Antibody:* Affinity purified rabbit anti-TOP1 antibody A302-590A (lot A302-590A-3) used for WB at 0.1 µg/ml. *Detection:* Chemiluminescence with an exposure time of 30 seconds.



**Detection of mouse TOP1 by western blot.** *Samples:* Whole cell lysate (50 µg) from NIH 3T3 cells prepared using NETN lysis buffer. *Antibody:* Affinity purified rabbit anti-TOP1 antibody A302-590A (lot A302-590A-3) used for WB at 0.1 µg/ml. *Detection:* Chemiluminescence with an exposure time of 30 seconds.



**Detection of human TOP1 by western blot of immunoprecipitates.** *Samples:* Whole cell lysate (0.5 or 1.0 mg per IP reaction; 20% of IP loaded) from HeLa cells prepared using NETN lysis buffer. *Antibodies:* Affinity purified rabbit anti-TOP1 antibody A302-590A (lot A302-590A-3) used for IP at 6 µg per reaction. TOP1 was also immunoprecipitated by a previous lot of this antibody (lot A302-590A-2). For blotting immunoprecipitated TOP1, A302-590A was used at 1 µg/ml. *Detection:* Chemiluminescence with an exposure time of 3 minutes.