

BRD2 Antibody

Rabbit Polyclonal

Antigen Affinity Purified

Protein ID NP_005095.1

Catalog No. A302-583A

GeneID 6046

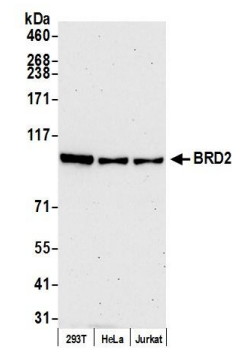
Lot No. A302-583A-6



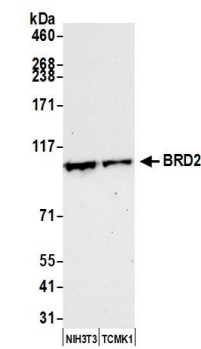
APPLICATIONS	WB, IP, IHC, ICC-IF								
SPECIES REACTIVITY	Human, Mouse								
PRESUMED REACTIVITY	Based on 100% sequence identity, this antibody is predicted to react with Bovine and Dog								
AMOUNT	100 µl								
CONCENTRATION	200 µg/ml								
STORAGE/SHELF LIFE	2 – 8° C / 1 year from date of receipt								
PHYSICAL STATE	Liquid								
BUFFER	Tris-buffered Saline containing 0.1% BSA and 0.09% Sodium Azide								
ISOTYPE	IgG								
ORIGIN	USA								
PRODUCTION PROCEDURES	<p>Antibody was affinity purified using an epitope specific to BRD2 immobilized on solid support.</p> <p>The epitope recognized by A302-583A maps to a region between residue 675 and 725 of human bromodomain containing 2 using the numbering given in entry NP_005095.1 (GeneID 6046).</p> <p>Antibody concentration was determined by extinction coefficient: absorbance at 280 nm of 1.4 equals 1.0 mg of IgG.</p>								
APPLICATIONS	<p>Centrifuge tube to remove product from lid. Optimal working dilutions should be determined experimentally by the investigator. Prepare working dilution immediately before use.</p> <table><tr><td>Western Blot</td><td>1:2,000 – 1:10,000</td></tr><tr><td>Immunoprecipitation</td><td>2 – 10 µg/mg lysate</td></tr><tr><td>Immunohistochemistry</td><td>1:100 – 1:500. Epitope retrieval with citrate buffer pH 6.0 is recommended for FFPE tissue sections.</td></tr><tr><td>Immunofluorescence (ICC)</td><td>1:100 – 1:500</td></tr></table>	Western Blot	1:2,000 – 1:10,000	Immunoprecipitation	2 – 10 µg/mg lysate	Immunohistochemistry	1:100 – 1:500. Epitope retrieval with citrate buffer pH 6.0 is recommended for FFPE tissue sections.	Immunofluorescence (ICC)	1:100 – 1:500
Western Blot	1:2,000 – 1:10,000								
Immunoprecipitation	2 – 10 µg/mg lysate								
Immunohistochemistry	1:100 – 1:500. Epitope retrieval with citrate buffer pH 6.0 is recommended for FFPE tissue sections.								
Immunofluorescence (ICC)	1:100 – 1:500								
APPLICATION NOTES	<p>Western blot of immunoprecipitates performed using Normal Pig Serum (Cat. No. S100-020), Goat anti-Rabbit Light Chain HRP Conjugate (Cat. No. A120-113P) and 4-8% SDS-PAGE (link to IP-western blot protocol in Additional Info section below).</p> <p>Western blot of lysates performed using standard western blot reagents and 4-8% SDS-PAGE.</p>								
IHC HUMAN CONTROLS	Breast Carcinoma, Ovarian Carcinoma, Prostate Carcinoma, HeLa Cells								
ADDITIONAL INFO	<p>https://www.bethyl.com/product/A302-583A</p> <p>Use the link above to view SDS, a current list of citations, and other product specific information.</p> <p>IP-western blot protocol https://www.bethyl.com/content/protocol_IP_WB</p>								

This document certifies that this product has met all of the quality control standards defined by Bethyl Laboratories, Inc.
Eric McIntush, PhD | Chief Scientific Officer

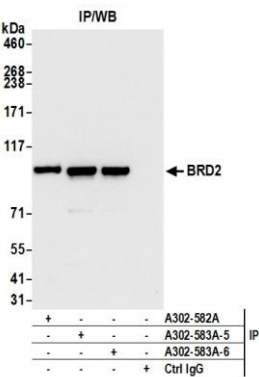
Date: July 26, 2019



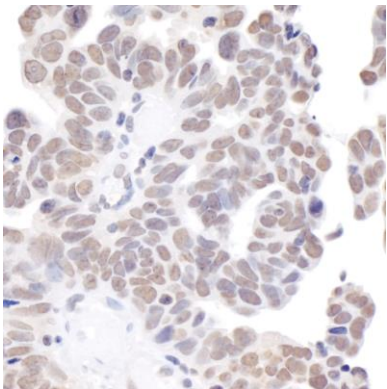
Detection of human BRD2 by western blot. *Samples:* Whole cell lysate (50 µg) from HEK293T, HeLa, and Jurkat cells prepared using NETN lysis buffer. *Antibody:* Affinity purified rabbit anti-BRD2 antibody A302-582A (lot A302-582A-6) used for WB at 0.04 µg/ml. *Detection:* Chemiluminescence with an exposure time of 75 seconds.



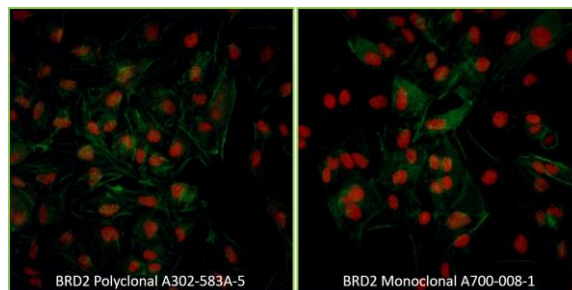
Detection of mouse BRD2 by western blot. *Samples:* Whole cell lysate (50 µg) from NIH 3T3 and TCMK-1 cells prepared using NETN lysis buffer. *Antibody:* Affinity purified rabbit anti-BRD2 antibody A302-583A (lot A302-583A-6) used for WB at 0.1 µg/ml. *Detection:* Chemiluminescence with an exposure time of 30 seconds.



Detection of human BRD2 by western blot of immunoprecipitates. *Samples:* Whole cell lysate (1.0 mg per IP reaction; 20% of IP loaded) from HEK293T cells prepared using NETN lysis buffer. *Antibodies:* Affinity purified rabbit anti-BRD2 antibody A302-583A (lot A302-583A-6) used for IP at 6 µg per reaction. BRD2 was also immunoprecipitated by a previous lot of this antibody (lot A302-583A-5) and rabbit anti-BRD2 antibody A302-582A. For blotting immunoprecipitated BRD2, A302-583A was used at 0.04 µg/ml. *Detection:* Chemiluminescence with an exposure time of 3 seconds.



Detection of human BRD2 by immunohistochemistry. *Sample:* FFPE section of human ovarian carcinoma. *Antibody:* Affinity purified rabbit anti-BRD2 (Cat. No.A302-583A Lot5) used at a dilution of 1:200 (1 µg/ml). *Detection:* DAB

**Detection of human BRD2 by immunocytochemistry.**

Sample: Formaldehyde-fixed asynchronous HeLa cells.

Antibody: Affinity purified rabbit anti- BRD2 (Cat.

No.A302-583A Lot5) used at a dilution of 1:100 (2 μ g/ml)

(left) and rabbit anti-BRD2 recombinant monoclonal

(A700-008-1) used at a dilution of 1:20 (right). *Detection:*

Red-fluorescent goat anti-rabbit IgG cross-adsorbed

Antibody DyLight 594 conjugated.