

# ADRM1 Antibody

Rabbit Polyclonal

Antigen Affinity Purified	Protein ID	NP_008933.2
Catalog No. A302-555A	GeneID	11047
Lot No. A302-555A-3		

---

<b>APPLICATIONS</b>	WB, IHC
<b>SPECIES REACTIVITY</b>	Human
<b>AMOUNT</b>	100 µl
<b>CONCENTRATION</b>	1000 µg/ml
<b>STORAGE/SHELF LIFE</b>	2 – 8°C / 1 year from date of receipt
<b>PHYSICAL STATE</b>	Liquid
<b>BUFFER</b>	Tris-citrate/phosphate buffer, pH 7 to 8 containing 0.09% Sodium Azide
<b>ISOTYPE</b>	IgG
<b>ORIGIN</b>	USA
<b>PRODUCTION PROCEDURES</b>	Antibody was affinity purified using an epitope specific to ADRM1 immobilized on solid support.

The epitope recognized by A302-555A maps to a region between residue 357 and 407 of human adhesion regulating molecule 1 using the numbering given in entry NP\_008933.2 (GeneID 11047).

Antibody concentration was determined by extinction coefficient: absorbance at 280 nm of 1.4 equals 1.0 mg of IgG.

**APPLICATIONS** Centrifuge tube to remove product from lid. Optimal working dilutions should be determined experimentally by the investigator. Prepare working dilution immediately before use.

Western Blot 1:2,000 – 1:10,000

Immunohistochemistry 1:500 – 1:2,000. Epitope retrieval with citrate buffer pH 6.0 is recommended for FFPE tissue sections.

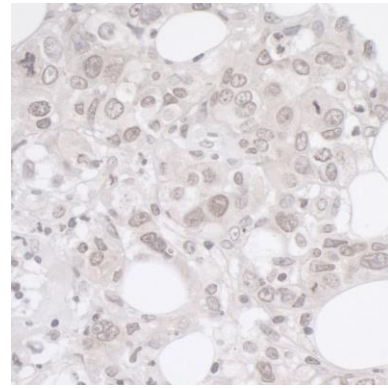
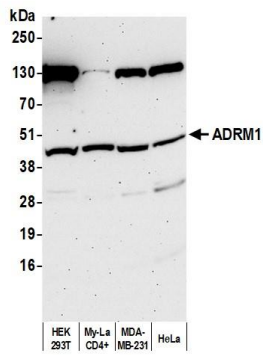
**IHC HUMAN CONTROLS** Breast Carcinoma, Ovarian Carcinoma, Prostate Carcinoma

**IHC MOUSE CONTROLS** Teratoma

**ADDITIONAL INFO** <https://www.bethyl.com/product/A302-555A>

Use the link above to view SDS, a current list of citations, and other product specific information. IP-western blot protocol: [https://www.bethyl.com/content/protocol\\_IP\\_WB](https://www.bethyl.com/content/protocol_IP_WB)

This document certifies that this product has met all of the quality control standards defined by Bethyl Laboratories, Inc.  
Michael Spencer, PhD Date: April 21, 2022



**Detection of human ADRM1 by western blot.** *Samples:* Whole cell lysate (50  $\mu$ g) from HEK293T, My-La CD4+, MDA-MB-231, and HeLa cells prepared using NETN lysis buffer. *Antibody:* Affinity purified rabbit anti-ADRM1 antibody (A302-555A lot 3) used for WB at 1  $\mu$ g/ml. *Detection:* Chemiluminescence with an exposure time of 75 seconds.

**Detection of human ADRM1 by immunohistochemistry.** *Sample:* FFPE section of human breast carcinoma. *Antibody:* Affinity purified rabbit anti-ADRM1 (Cat. No. A302-555A Lot2) used at a dilution of 1:1,000 (1  $\mu$ g/ml). *Detection:* DAB