

NCBP2 Antibody

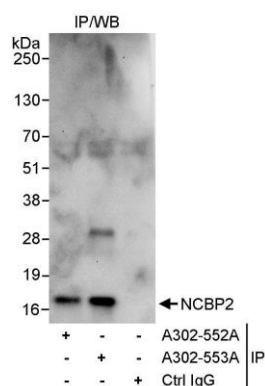
Rabbit Polyclonal

Antigen Affinity Purified Protein ID NP_031388.2
Catalog No. A302-552A GeneID 22916
Lot No. A302-552A-1

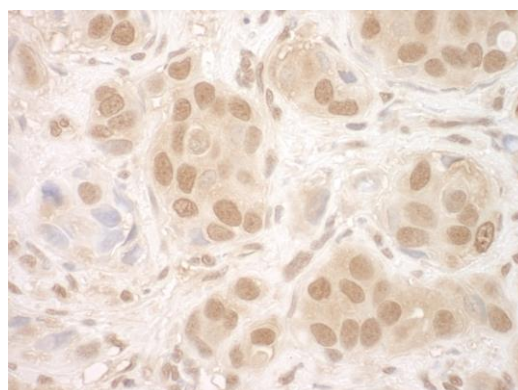


APPLICATIONS	IP, IHC
SPECIES REACTIVITY	Human
PRESUMED REACTIVITY	Based on 100% sequence identity, this antibody is predicted to react with Mouse, Rat and Bovine
AMOUNT	100 µl
CONCENTRATION	1000 µg/ml
STORAGE/SHELF LIFE	2 – 8° C / 1 year from date of receipt
PHYSICAL STATE	Liquid
BUFFER	Tris–citrate/phosphate buffer, pH 7 to 8 containing 0.09% Sodium Azide
ISOTYPE	IgG
ORIGIN	USA
PRODUCTION PROCEDURES	Antibody was affinity purified using an epitope specific to NCBP2 immobilized on solid support. The epitope recognized by A302-552A maps to a region between residue 1 and 50 of human nuclear cap binding protein subunit 2 using the numbering given in entry NP_031388.2 (GeneID 22916). Antibody concentration was determined by extinction coefficient: absorbance at 280 nm of 1.4 equals 1.0 mg of IgG.
APPLICATIONS	Centrifuge tube to remove product from lid. Optimal working dilutions should be determined experimentally by the investigator. Prepare working dilution immediately before use. Western Blot Not recommended. Use rabbit anti-NCBP2 antibody A302-553A. Immunoprecipitation 5 – 15 µg/mg lysate Immunohistochemistry 1:2,000 – 1:10,000. Epitope retrieval with citrate buffer pH 6.0 is recommended for FFPE tissue sections.
APPLICATION NOTES	Western blot of immunoprecipitates performed using Normal Pig Serum (Cat. No. S100-020), Goat anti-Rabbit Light Chain HRP Conjugate (Cat. No. A120-113P) and 4-12% SDS-PAGE (link to IP-western blot protocol in Additional Info section below).
IHC HUMAN CONTROLS	Breast Carcinoma
ADDITIONAL INFO	https://www.bethyl.com/product/A302-552A Use the link above to view SDS, a current list of citations, and other product specific information. IP-western blot protocol: https://www.bethyl.com/content/protocol_IP_WB

This document certifies that this product has met all of the quality control standards defined by Bethyl Laboratories, Inc.
Eric McIntush, PhD | Chief Scientific Officer Date: June 21, 2019



Detection of human NCBP2 by western blot of immunoprecipitates. *Samples:* Whole cell lysate (1 mg for IP, 20% of IP loaded) from HeLa cells. *Antibodies:* Affinity purified rabbit anti-NCBP2 antibody A302-552A used for IP at 3 μ g/mg lysate. NCBP2 was also immunoprecipitated by rabbit anti-NCBP2 antibody A302-553A, which recognizes a downstream epitope. For blotting immunoprecipitated NCBP2, A302-553A was used at 1 μ g/ml. *Detection:* Chemiluminescence with an exposure time of 30 seconds.



Detection of human NCBP2 by immunohistochemistry. *Sample:* FFPE section of human breast carcinoma. *Antibody:* Affinity purified rabbit anti- NCBP2 (Cat. No. A302-552A Lot1) used at a dilution of 1:5,000 (0.2 μ g/ml). *Detection:* DAB