

RACK1 Antibody

Rabbit Polyclonal

Antigen Affinity Purified

Protein ID NP_006089.1

Catalog No. A302-545A

GeneID 10399

Lot No. A302-545A-1



APPLICATIONS	WB, IP
SPECIES REACTIVITY	Human, Mouse
PRESUMED REACTIVITY	Based on 100% sequence identity, this antibody is predicted to react with Rat, Chicken, Bovine and Pig
AMOUNT	100 µl
CONCENTRATION	1000 µg/ml
STORAGE/SHELF LIFE	2 - 8° C / 1 year from date of receipt
PHYSICAL STATE	Liquid
BUFFER	Tris-citrate/phosphate buffer, pH 7 to 8 containing 0.09% Sodium Azide
ISOTYPE	IgG
ORIGIN	USA
PRODUCTION PROCEDURES	Antibody was affinity purified using an epitope specific to RACK1 immobilized on solid support.

The epitope recognized by A302-545A maps to a region between residue 1 and 50 of human receptor of activated protein kinase C 1 using the numbering given in entry NP_006089.1 (GeneID 10399).

Antibody concentration was determined by extinction coefficient: absorbance at 280 nm of 1.4 equals 1.0 mg of IgG.

APPLICATIONS Centrifuge tube to remove product from lid. Optimal working dilutions should be determined experimentally by the investigator. Prepare working dilution immediately before use.

Western Blot 1:2,000 - 1:10,000

Immunoprecipitation 2 - 5 µg/mg lysate

APPLICATION NOTES Western blot of immunoprecipitates performed using Normal Pig Serum (Cat. No. S100-020), Goat anti-Rabbit Light Chain HRP Conjugate (Cat. No. A120-113P) and 4-20% SDS-PAGE (link to IP-western blot protocol in Additional Info section below).

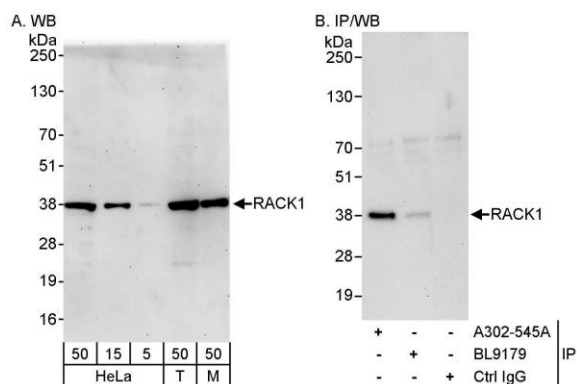
Western blot of lysates performed using standard western blot reagents and 4-20% SDS-PAGE.

ADDITIONAL INFO <https://www.bethyl.com/product/A302-545A>

Use the link above to view SDS, a current list of citations, and other product specific information.

IP-western blot protocol: https://www.bethyl.com/content/protocol_IP_WB

This document certifies that this product has met all of the quality control standards defined by Bethyl Laboratories, Inc.
Eric McIntush, PhD | Chief Scientific Officer Date: June 21, 2019



Detection of human and mouse RACK1 by western blot (h&m) and immunoprecipitation (h). *Samples:* Whole cell lysate from HeLa (5, 15 and 50 µg for WB; 1 mg for IP, 20% of IP loaded), HEK293T (T; 50 µg), and mouse NIH 3T3 (M; 50 µg) cells. *Antibodies:* Affinity purified rabbit anti-RACK1 antibody A302-545A used for WB at 0.1 µg/ml (A) and 1 µg/ml (B) and used for IP at 3 µg/mg lysate. RACK1 was also immunoprecipitated by rabbit anti-RACK1 antibody BL9179, which recognizes a downstream epitope. *Detection:* Chemiluminescence with exposure times of 3 minutes (A) and 30 seconds (B).