

MCEF Antibody

Rabbit Polyclonal

Antigen Affinity Purified

Protein ID NP_055238.1

Catalog No. A302-539A

GeneID 27125

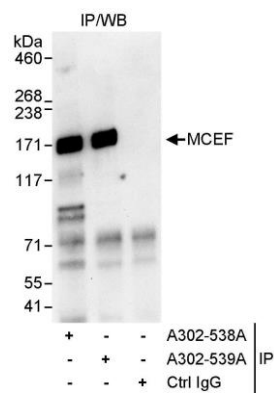
Lot No. A302-539A-1



APPLICATIONS	IP				
SPECIES REACTIVITY	Human				
PRESUMED REACTIVITY	Based on 100% sequence identity, this antibody is predicted to react with Mouse				
AMOUNT	100 µl				
CONCENTRATION	1000 µg/ml				
STORAGE/SHELF LIFE	2 – 8° C / 1 year from date of receipt				
PHYSICAL STATE	Liquid				
BUFFER	Tris-citrate/phosphate buffer, pH 7 to 8 containing 0.09% Sodium Azide				
ISOTYPE	IgG				
ORIGIN	USA				
PRODUCTION PROCEDURES	<p>Antibody was affinity purified using an epitope specific to MCEF immobilized on solid support.</p> <p>The epitope recognized by A302-539A maps to a region between residue 1113 and 1163 of human major CDK9 elongation factor-associated protein of human using the numbering given in entry NP_055238.1 (GeneID 27125).</p> <p>Antibody concentration was determined by extinction coefficient: absorbance at 280 nm of 1.4 equals 1.0 mg of IgG.</p>				
APPLICATIONS	<p>Centrifuge tube to remove product from lid. Optimal working dilutions should be determined experimentally by the investigator. Prepare working dilution immediately before use.</p> <table><tr><td>Western Blot</td><td>Not recommended</td></tr><tr><td>Immunoprecipitation</td><td>5 – 15 µg/mg lysate</td></tr></table>	Western Blot	Not recommended	Immunoprecipitation	5 – 15 µg/mg lysate
Western Blot	Not recommended				
Immunoprecipitation	5 – 15 µg/mg lysate				
APPLICATION NOTES	Western blot of immunoprecipitates performed using Normal Pig Serum (Cat. No. S100-020), Goat anti-Rabbit Light Chain HRP Conjugate (Cat. No. A120-113P) and 4-8% SDS-PAGE (link to IP-western blot protocol in Additional Info section below).				
ADDITIONAL INFO	<p>https://www.bethyl.com/product/A302-539A</p> <p>Use the link above to view SDS, a current list of citations, and other product specific information.</p> <p>IP-western blot protocol: https://www.bethyl.com/content/protocol_IP_WB</p>				

This document certifies that this product has met all of the quality control standards defined by Bethyl Laboratories, Inc.
Eric McIntush, PhD | Chief Scientific Officer

Date: June 24, 2019



Detection of human MCEF by western blot of immunoprecipitates. *Samples:* Whole cell lysate (1 mg for IP, 20% of IP loaded) from HeLa cells. *Antibodies:* Affinity purified rabbit anti-MCEF antibody A302-539A used for IP at 10 µg/mg lysate. MCEF was also immunoprecipitated by rabbit anti-MCEF antibody A302-538A, which recognizes a downstream epitope. For blotting immunoprecipitated MCEF, A302-538A was used at 1 µg/ml. *Detection:* Chemiluminescence with an exposure time of 30 seconds.