

# MCEF Antibody

Rabbit Polyclonal

Antigen Affinity Purified

Protein ID NP\_055238.1

Catalog No. A302-538A

GeneID 27125

Lot No. A302-538A-2



<b>APPLICATIONS</b>	IP
<b>SPECIES REACTIVITY</b>	Human
<b>AMOUNT</b>	100 µl
<b>CONCENTRATION</b>	1000 µg/ml
<b>STORAGE/SHELF LIFE</b>	2 – 8° C / 1 year from date of receipt
<b>PHYSICAL STATE</b>	Liquid
<b>BUFFER</b>	Tris-citrate/phosphate buffer, pH 7 to 8 containing 0.09% Sodium Azide
<b>ISOTYPE</b>	IgG
<b>ORIGIN</b>	USA
<b>PRODUCTION PROCEDURES</b>	Antibody was affinity purified using an epitope specific to MCEF immobilized on solid support.

The epitope recognized by A302-538A maps to a region between residue 50 and 100 of human major CDK9 elongation factor-associated protein of human using the numbering given in entry NP\_055238.1 (GeneID 27125).

Antibody concentration was determined by extinction coefficient: absorbance at 280 nm of 1.4 equals 1.0 mg of IgG.

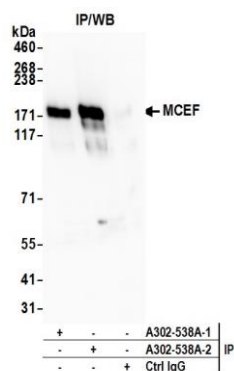
**APPLICATIONS** Centrifuge tube to remove product from lid. Optimal working dilutions should be determined experimentally by the investigator. Prepare working dilution immediately before use.

Western Blot Not recommended. A302-538A has not performed satisfactorily when used for WB of MCEF in crude preparations (e.g. whole cell lysate). This antibody can be used for WB of enriched (e.g. immunoprecipitated) sources of MCEF.

Immunoprecipitation 5 – 15 µg/mg lysate

**ADDITIONAL INFO** <https://www.bethyl.com/product/A302-538A>  
Use the link above to view SDS, a current list of citations, and other product specific information.  
IP-western blot protocol: [https://www.bethyl.com/content/protocol\\_IP\\_WB](https://www.bethyl.com/content/protocol_IP_WB)

This document certifies that this product has met all of the quality control standards defined by Bethyl Laboratories, Inc.  
Eric McIntush, PhD | Chief Scientific Officer Date: July 13, 2020



**Detection of Human MCEF by Western Blot of Immunoprecipitates.** *Samples:* Whole cell lysate (0.5 or 1.0 mg per IP reaction; 20% of IP loaded) from 293T cells prepared using NETN lysis buffer. *Antibodies:* Affinity purified rabbit anti-MCEF antibody A302-538A (lot A302-538A-2) used for IP at 6  $\mu$ g per reaction. MCEF was also immunoprecipitated by a previous lot of this antibody (lot A302-538A-1). For blotting immunoprecipitated MCEF, A302-538A was used at 1  $\mu$ g/ml. *Detection:* Chemiluminescence with an exposure time of 75 seconds.