

# ELL2 Antibody

Rabbit Polyclonal

Antigen Affinity Purified

Protein ID NP\_036213.2

Catalog No. A302-505A

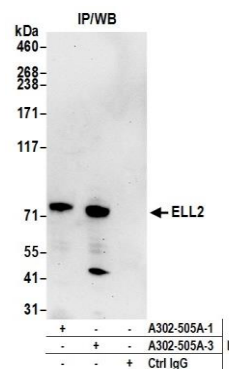
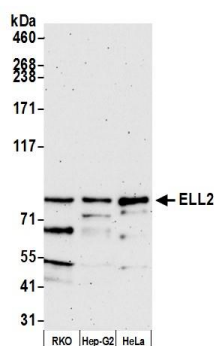
GeneID 22936

Lot No. A302-505A-3



<b>APPLICATIONS</b>	WB, IP
<b>SPECIES REACTIVITY</b>	Human
<b>AMOUNT</b>	100 µl
<b>CONCENTRATION</b>	1000 µg/ml
<b>STORAGE/SHELF LIFE</b>	2 - 8° C / 1 year from date of receipt
<b>PHYSICAL STATE</b>	Liquid
<b>BUFFER</b>	Tris-citrate/phosphate buffer, pH 7 to 8 containing 0.09% Sodium Azide
<b>ISOTYPE</b>	IgG
<b>ORIGIN</b>	USA
<b>PRODUCTION PROCEDURES</b>	<p>Antibody was affinity purified using an epitope specific to ELL2 immobilized on solid support.</p> <p>The epitope recognized by A302-505A maps to a region between residue 400 and 450 of human elongation factor, RNA polymerase II, 2 using the numbering given in entry NP_036213.2 (GeneID 22936).</p> <p>Antibody concentration was determined by extinction coefficient: absorbance at 280 nm of 1.4 equals 1.0 mg of IgG.</p>
<b>APPLICATIONS</b>	<p>Centrifuge tube to remove product from lid. Optimal working dilutions should be determined experimentally by the investigator. Prepare working dilution immediately before use.</p> <p>Western Blot                      1:2,000 - 1:10,000</p> <p>Immunoprecipitation          2 - 10 µg/mg lysate</p>
<b>APPLICATION NOTES</b>	<p>Western blot of immunoprecipitates performed using Normal Pig Serum (Cat. No. S100-020), Goat anti-Rabbit Light Chain HRP Conjugate (Cat. No. A120-113P) and 4-8% SDS-PAGE (link to IP-western blot protocol in Additional Info section below).</p> <p>Western blot of lysates performed using standard western blot reagents and 4-8% SDS-PAGE. <a href="https://www.bethyl.com/product/A302-505A">https://www.bethyl.com/product/A302-505A</a></p>
<b>ADDITIONAL INFO</b>	<p>Use the link above to view SDS, a current list of citations, and other product specific information. IP-western blot protocol <a href="https://www.bethyl.com/content/protocol_IP_WB">https://www.bethyl.com/content/protocol_IP_WB</a></p>

This document certifies that this product has met all of the quality control standards defined by Bethyl Laboratories, Inc.  
Eric McIntush, PhD | Chief Scientific Officer Date: July 26, 2019



**Detection of human ELL2 by western blot.** *Samples:* Whole cell lysate (15 µg) from RKO, Hep-G2, and HeLa cells prepared using NETN lysis buffer. *Antibody:* Affinity purified rabbit anti-ELL2 antibody A302-505A (lot A302-505A-3) used for WB at 0.1 µg/ml. *Detection:* Chemiluminescence with an exposure time of 3 minutes.

**Detection of human ELL2 by western blot of immunoprecipitates.** *Samples:* Whole cell lysate (1.0 mg per IP reaction; 20% of IP loaded) from HeLa cells prepared using NETN lysis buffer. *Antibodies:* Affinity purified rabbit anti-ELL2 antibody A302-505A (lot A302-505A-3) used for IP at 6 µg per reaction. ELL2 was also immunoprecipitated by a previous lot of this antibody (lot A302-505A-1). For blotting immunoprecipitated ELL2, A302-505A was used at 0.1 µg/ml. *Detection:* Chemiluminescence with an exposure time of 30 seconds.