

# SPF45 Antibody

Rabbit Polyclonal

Antigen Affinity Purified

Protein ID NP\_116294.1

Catalog No. A302-497A

GeneID 84991

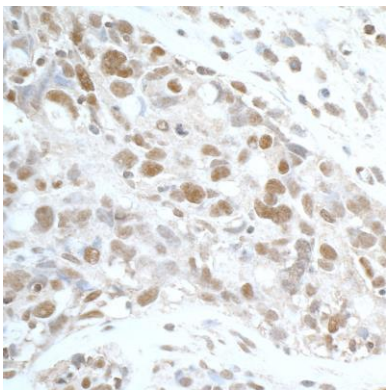
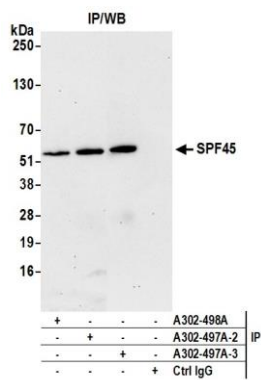
Lot No. A302-497A-3



<b>APPLICATIONS</b>	IP, IHC						
<b>SPECIES REACTIVITY</b>	Human, Mouse						
<b>AMOUNT</b>	100 µl						
<b>CONCENTRATION</b>	1000 µg/ml						
<b>STORAGE/SHELF LIFE</b>	2 – 8° C / 1 year from date of receipt						
<b>PHYSICAL STATE</b>	Liquid						
<b>BUFFER</b>	Tris-citrate/phosphate buffer, pH 7 to 8 containing 0.09% Sodium Azide						
<b>ISOTYPE</b>	IgG						
<b>ORIGIN</b>	USA						
<b>PRODUCTION PROCEDURES</b>	<p>Antibody was affinity purified using an epitope specific to SPF45 immobilized on solid support.</p> <p>The epitope recognized by A302-497A maps to a region between residue 25 and 75 of human splicing factor (45kD) using the numbering given in entry NP_116294.1 (GeneID 84991).</p> <p>Antibody concentration was determined by extinction coefficient: absorbance at 280 nm of 1.4 equals 1.0 mg of IgG.</p>						
<b>APPLICATIONS</b>	<p>Centrifuge tube to remove product from lid. Optimal working dilutions should be determined experimentally by the investigator. Prepare working dilution immediately before use.</p> <table><tr><td>Western Blot</td><td>Not recommended. Use rabbit anti-SPF45 antibody A302-498A.</td></tr><tr><td>Immunoprecipitation</td><td>2 – 10 µg/mg lysate</td></tr><tr><td>Immunohistochemistry</td><td>1:1,000 to 1:5,000. Epitope retrieval with citrate buffer pH6.0 is recommended for FFPE tissue sections.</td></tr></table>	Western Blot	Not recommended. Use rabbit anti-SPF45 antibody A302-498A.	Immunoprecipitation	2 – 10 µg/mg lysate	Immunohistochemistry	1:1,000 to 1:5,000. Epitope retrieval with citrate buffer pH6.0 is recommended for FFPE tissue sections.
Western Blot	Not recommended. Use rabbit anti-SPF45 antibody A302-498A.						
Immunoprecipitation	2 – 10 µg/mg lysate						
Immunohistochemistry	1:1,000 to 1:5,000. Epitope retrieval with citrate buffer pH6.0 is recommended for FFPE tissue sections.						
<b>APPLICATION NOTES</b>	Western blot of immunoprecipitates performed using Normal Pig Serum (Cat. No. S100-020), Goat anti-Rabbit Light Chain HRP Conjugate (Cat. No. A120-113P) and 4-20% SDS-PAGE (link to IP-western blot protocol in Additional Info section below).						
<b>IHC HUMAN CONTROLS</b>	Breast Carcinoma, Colon Carcinoma, Ovarian Carcinoma, Prostate Carcinoma						
<b>IHC MOUSE CONTROLS</b>	Plasmacytoma, Teratoma						
<b>ADDITIONAL INFO</b>	<p><a href="https://www.bethyl.com/product/A302-497A">https://www.bethyl.com/product/A302-497A</a></p> <p>Use the link above to view SDS, a current list of citations, and other product specific information.</p> <p>IP-western blot protocol <a href="https://www.bethyl.com/content/protocol_IP_WB">https://www.bethyl.com/content/protocol_IP_WB</a></p>						

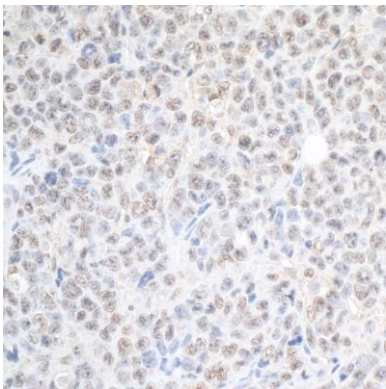
This document certifies that this product has met all of the quality control standards defined by Bethyl Laboratories, Inc.  
Eric McIntush, PhD | Chief Scientific Officer

Date: July 16, 2019



**Detection of human SPF45 by western blot of immunoprecipitates.** *Samples:* Whole cell lysate (1.0 mg per IP reaction; 20% of IP loaded) from HeLa cells prepared using NETN lysis buffer. *Antibodies:* Affinity purified rabbit anti-SPF45 antibody A302-497A (lot A302-497A-3) used for IP at 6 µg per reaction. SPF45 was also immunoprecipitated by a previous lot of this antibody (lot A302-497A-2) and rabbit anti-SPF45 antibody A302-498A. For blotting immunoprecipitated SPF45, A302-497A was used at 0.1 µg/ml. *Detection:* Chemiluminescence with an exposure time of 30 seconds.

**Detection of human SPF45 by immunohistochemistry.** *Sample:* FFPE section of human ovarian carcinoma. *Antibody:* Affinity purified rabbit anti-SPF45 (Cat. No. A302-497A lot 3) used at a dilution of 1:5,000 (0.2µg/ml). *Detection:* DAB



**Detection of mouse SPF45 by immunohistochemistry.** *Sample:* FFPE section of mouse plasmacytoma. *Antibody:* Affinity purified rabbit anti-SPF45 (Cat. No. A302-497A lot 3) used at a dilution of 1:5,000 (0.2µg/ml). *Detection:* DAB