

CDC6 Antibody

Rabbit Polyclonal

Antigen Affinity Purified	Protein ID	NP_001245.1
Catalog No. A302-486A	GeneID	990
Lot No. A302-486A-1		



APPLICATIONS	IP, IHC
SPECIES REACTIVITY	Human
AMOUNT	100 µl
CONCENTRATION	1000 µg/ml
STORAGE/SHELF LIFE	2 – 8° C / 1 year from date of receipt
PHYSICAL STATE	Liquid
BUFFER	Tris-citrate/phosphate buffer, pH 7 to 8 containing 0.09% Sodium Azide
ISOTYPE	IgG
ORIGIN	USA
PRODUCTION PROCEDURES	Antibody was affinity purified using an epitope specific to CDC6 immobilized on solid support.

The epitope recognized by A302-486A maps to a region between residue 1 and 50 of human cell division cycle 6 using the numbering given in entry NP_001245.1 (GeneID 990).

Antibody concentration was determined by extinction coefficient: absorbance at 280 nm of 1.4 equals 1.0 mg of IgG.

APPLICATIONS Centrifuge tube to remove product from lid. Optimal working dilutions should be determined experimentally by the investigator. Prepare working dilution immediately before use.

Western Blot Not recommended. Use rabbit anti-CDC6 antibody A302-487A.

Immunoprecipitation 2 – 5 µg/mg lysate

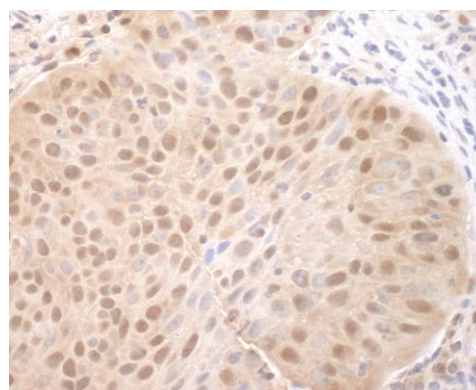
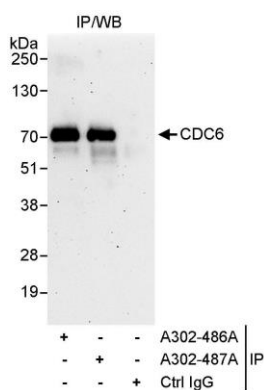
Immunohistochemistry 1:1,000 – 1:5,000. Epitope retrieval with citrate buffer pH 6.0 is recommended for FFPE tissue sections.

APPLICATION NOTES Western blot of immunoprecipitates performed using Normal Pig Serum (Cat. No. S100-020), Goat anti-Rabbit Light Chain HRP Conjugate (Cat. No. A120-113P) and 4-20% SDS-PAGE (link to IP-western blot protocol in Additional Info section below).

IHC HUMAN CONTROLS Breast Carcinoma, Colon Carcinoma, Ovarian Carcinoma

ADDITIONAL INFO <https://www.bethyl.com/product/A302-486A>
Use the link above to view SDS, a current list of citations, and other product specific information.
IP-western blot protocol: https://www.bethyl.com/content/protocol_IP_WB

This document certifies that this product has met all of the quality control standards defined by Bethyl Laboratories, Inc.
Eric McIntush, PhD | Chief Scientific Officer Date: June 21, 2019



Detection of human CDC6 by western blot of immunoprecipitates. *Samples:* Whole cell lysate (1 mg for IP, 20% of IP loaded) from HeLa cells. *Antibodies:* Affinity purified rabbit anti-CDC6 antibody A302-486A used for IP at 3 µg/mg lysate. CDC6 was also immunoprecipitated by rabbit anti-CDC6 antibody A302-487A, which recognizes a downstream epitope. For blotting immunoprecipitated CDC6, A302-487A was used at 1 µg/ml. *Detection:* Chemiluminescence with an exposure time of 3 minutes.

Detection of human CDC6 by immunohistochemistry. *Sample:* FFPE section of human lung carcinoma. *Antibody:* Affinity purified rabbit anti-CDC6 (Cat. No. A302-486A) used at a dilution of 1:1,000 (1µg/ml). *Detection:* DAB