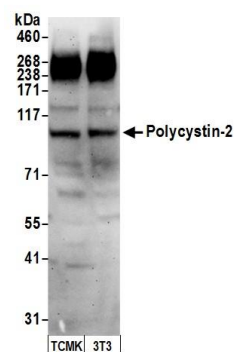


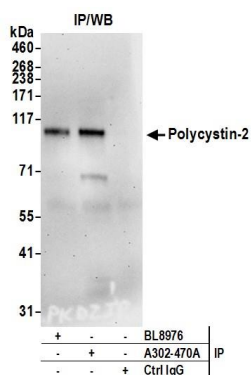
Detection of human Polycystin-2 by western blot.

Samples: Whole cell lysate (15 µg) from HeLa and HEK293T cells prepared using NETN lysis buffer. *Antibody:* Affinity purified rabbit anti-Polycystin-2 antibody A302-470A (lot A302-470A-3) used for WB at 0.1 µg/ml. *Detection:* Chemiluminescence with an exposure time of 3 minutes.



Detection of mouse Polycystin-2 by western blot.

Samples: Whole cell lysate (50 µg) from TCMK-1 and NIH 3T3 cells prepared using NETN lysis buffer. *Antibody:* Affinity purified rabbit anti-Polycystin-2 antibody A302-470A (lot A302-470A-3) used for WB at 0.1 µg/ml. *Detection:* Chemiluminescence with an exposure time of 75 seconds.



Detection of human Polycystin-2 by western blot of immunoprecipitates.

Samples: Whole cell lysate (1.0 mg per IP reaction; 20% of IP loaded) from HeLa cells prepared using NETN lysis buffer. *Antibodies:* Affinity purified rabbit anti-Polycystin-2 antibody A302-470A (lot A302-470A-3) used for IP at 3 µg per reaction. Polycystin-2 was also immunoprecipitated by rabbit anti-Polycystin-2 antibody BL8976. For blotting immunoprecipitated Polycystin-2, A302-470A was used at 1 µg/ml. *Detection:* Chemiluminescence with an exposure time of 30 seconds.