

# Sirt6 Antibody

Rabbit Polyclonal

Antigen Affinity Purified

Protein ID NP\_057623.1

Catalog No. A302-451A

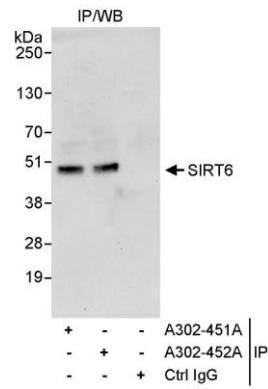
GeneID 51548

Lot No. A302-451A-1



|                              |   |
|------------------------------|---|
| <b>APPLICATIONS</b>          | IP  |
| <b>SPECIES REACTIVITY</b>    | Human   |
| <b>PRESUMED REACTIVITY</b>   | Based on 100% sequence identity, this antibody is predicted to react with Mouse   |
| <b>AMOUNT</b>                | 100 µl  |
| <b>CONCENTRATION</b>         | 1000 µg/ml  |
| <b>STORAGE/SHELF LIFE</b>    | 2 - 8° C / 1 year from date of receipt  |
| <b>PHYSICAL STATE</b>        | Liquid  |
| <b>BUFFER</b>                | Tris-citrate/phosphate buffer, pH 7 to 8 containing 0.09% Sodium Azide  |
| <b>ISOTYPE</b>               | IgG   |
| <b>ORIGIN</b>                | USA   |
| <b>PRODUCTION PROCEDURES</b> | <p>Antibody was affinity purified using an epitope specific to Sirt6 immobilized on solid support.</p> <p>The epitope recognized by A302-451A maps to a region between residue 50 and 100 of human sirtuin (silent mating type information regulation 2 homolog) 6 using the numbering given in entry NP_057623.1 (GeneID 51548).</p> <p>Antibody concentration was determined by extinction coefficient: absorbance at 280 nm of 1.4 equals 1.0 mg of IgG.</p> |
| <b>APPLICATIONS</b>          | <p>Centrifuge tube to remove product from lid. Optimal working dilutions should be determined experimentally by the investigator. Prepare working dilution immediately before use.</p> <p>Western Blot                      Not recommended. Use rabbit anti-Sirt6 antibody A302-452A.</p> <p>Immunoprecipitation            2 - 5 µg/mg lysate</p>   |
| <b>APPLICATION NOTES</b>     | Western blot of immunoprecipitates performed using Normal Pig Serum (Cat. No. S100-020), Goat anti-Rabbit Light Chain HRP Conjugate (Cat. No. A120-113P) and 4-20% SDS-PAGE (link to IP-western blot protocol in Additional Info section below).  |
| <b>ADDITIONAL INFO</b>       | <p><a href="https://www.bethyl.com/product/A302-451A">https://www.bethyl.com/product/A302-451A</a></p> <p>Use the link above to view SDS, a current list of citations, and other product specific information. IP-western blot protocol: <a href="https://www.bethyl.com/content/protocol_IP_WB">https://www.bethyl.com/content/protocol_IP_WB</a></p>  |

This document certifies that this product has met all of the quality control standards defined by Bethyl Laboratories, Inc.  
Eric McIntush, PhD | Chief Scientific Officer Date: June 21, 2019



**Detection of human Sirt6 by western blot of immunoprecipitates.** *Samples:* Whole cell lysate (1 mg for IP, 20% of IP loaded) from HeLa cells. *Antibodies:* Affinity purified rabbit anti-Sirt6 antibody A302-451A used for IP at 3  $\mu$ g/mg lysate. Sirt6 was also immunoprecipitated by rabbit anti-Sirt6 antibody A302-452A, which recognizes a downstream epitope. For blotting immunoprecipitated Sirt6, A302-452A was used at 1  $\mu$ g/ml. *Detection:* Chemiluminescence with an exposure time of 30 seconds.