

PKC–delta Antibody

Rabbit Polyclonal

Antigen Affinity Purified

Protein ID NP_006245.2

Catalog No. A302-448A

GeneID 5580

Lot No. A302-448A-2



APPLICATIONS WB, IP

SPECIES REACTIVITY Human

AMOUNT 100 µl

CONCENTRATION 200 µg/ml

STORAGE/SHELF LIFE 2 – 8° C / 1 year from date of receipt

PHYSICAL STATE Liquid

BUFFER Tris–buffered Saline containing 0.1% BSA and 0.09% Sodium Azide

ISOTYPE IgG

ORIGIN USA

PRODUCTION PROCEDURES Antibody was affinity purified using an epitope specific to PKC–delta immobilized on solid support.

The epitope recognized by A302-448A maps to a region between residue 626 to 676 of human protein kinase C, delta using the numbering given in entry NP_006245.2 (GeneID 5580).

Antibody concentration was determined by extinction coefficient: absorbance at 280 nm of 1.4 equals 1.0 mg of IgG.

APPLICATIONS Centrifuge tube to remove product from lid. Optimal working dilutions should be determined experimentally by the investigator. Prepare working dilution immediately before use.

Western Blot 1:2,000 – 1:10,000

Immunoprecipitation 2 – 5 µg/mg lysate

APPLICATION NOTES Western blot of immunoprecipitates performed using Normal Pig Serum (Cat. No. S100-020), Goat anti–Rabbit Light Chain HRP Conjugate (Cat. No. A120-113P) and 4–8% SDS–PAGE (link to IP–western blot protocol in Additional Info section below).

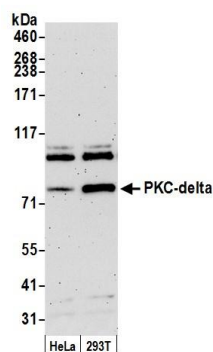
Western blot of lysates performed using standard western blot reagents and 4–8% SDS–PAGE.

ADDITIONAL INFO <https://www.bethyl.com/product/A302-448A>

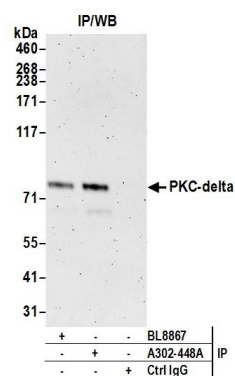
Use the link above to view SDS, a current list of citations, and other product specific information.

IP–western blot protocol: https://www.bethyl.com/content/protocol_IP_WB

This document certifies that this product has met all of the quality control standards defined by Bethyl Laboratories, Inc.
Eric McIntush, PhD | Chief Scientific Officer Date: June 21, 2019



Detection of human PKC-delta by western blot. *Samples:* Whole cell lysate (50 µg) from HeLa and HEK293T cells prepared using NETN lysis buffer. *Antibody:* Affinity purified rabbit anti-PKC-delta antibody A302-448A (lot A302-448A-2) used for WB at 0.1 µg/ml. *Detection:* Chemiluminescence with an exposure time of 30 seconds.



Detection of human PKC-delta by western blot of immunoprecipitates. *Samples:* Whole cell lysate (1.0 mg per IP reaction; 20% of IP loaded) from HeLa cells prepared using NETN lysis buffer. *Antibodies:* Affinity purified rabbit anti-PKC-delta antibody A302-448A (lot A302-448A-2) used for IP at 3 µg per reaction. PKC-delta was also immunoprecipitated by rabbit anti-PKC-delta antibody BL8867. For blotting immunoprecipitated PKC-delta, A302-448A was used at 1 µg/ml. *Detection:* Chemiluminescence with an exposure time of 3 minutes.