

PKC- α Antibody

Rabbit Polyclonal

Antigen Affinity Purified

Protein ID NP_002728.1

Catalog No. A302-446A

GeneID 5578

Lot No. A302-446A-1

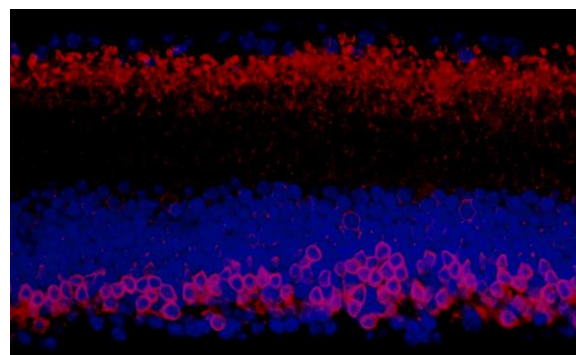
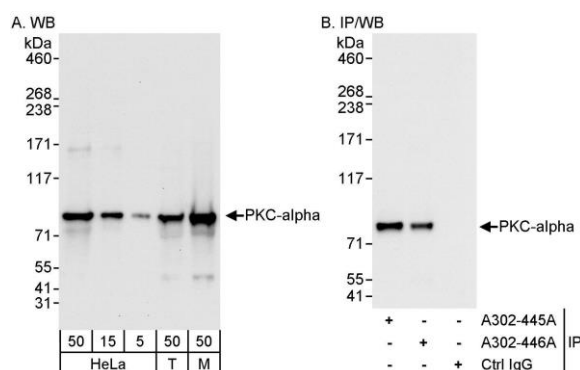


APPLICATIONS	WB, IP, IHC-IF						
SPECIES REACTIVITY	Human, Mouse						
PRESUMED REACTIVITY	Based on 100% sequence identity, this antibody is predicted to react with Rat and Bovine						
AMOUNT	100 μ l						
CONCENTRATION	200 μ g/ml						
STORAGE/SHELF LIFE	2 – 8° C / 1 year from date of receipt						
PHYSICAL STATE	Liquid						
BUFFER	Tris-buffered Saline containing 0.1% BSA and 0.09% Sodium Azide						
ISOTYPE	IgG						
ORIGIN	USA						
PRODUCTION PROCEDURES	<p>Antibody was affinity purified using an epitope specific to PKC-α immobilized on solid support.</p> <p>The epitope recognized by A302-446A maps to a region between residue 622 and 672 of human protein kinase C, α using the numbering given in entry NP_002728.1 (GeneID 5578).</p> <p>Antibody concentration was determined by extinction coefficient: absorbance at 280 nm of 1.4 equals 1.0 mg of IgG.</p>						
APPLICATIONS	<p>Centrifuge tube to remove product from lid. Optimal working dilutions should be determined experimentally by the investigator. Prepare working dilution immediately before use.</p> <table><tr><td>Western Blot</td><td>1:2,000 – 1:10,000</td></tr><tr><td>Immunoprecipitation</td><td>2 – 5 μg/mg lysate</td></tr><tr><td>Immunofluorescence (IHC)</td><td>1:100 – 1:500. Epitope retrieval with citrate buffer pH 6.0 is recommended for FFPE tissue sections.</td></tr></table>	Western Blot	1:2,000 – 1:10,000	Immunoprecipitation	2 – 5 μ g/mg lysate	Immunofluorescence (IHC)	1:100 – 1:500. Epitope retrieval with citrate buffer pH 6.0 is recommended for FFPE tissue sections.
Western Blot	1:2,000 – 1:10,000						
Immunoprecipitation	2 – 5 μ g/mg lysate						
Immunofluorescence (IHC)	1:100 – 1:500. Epitope retrieval with citrate buffer pH 6.0 is recommended for FFPE tissue sections.						
APPLICATION NOTES	<p>Western blot of immunoprecipitates performed using Normal Pig Serum (Cat. No. S100-020), Goat anti-Rabbit Light Chain HRP Conjugate (Cat. No. A120-113P) and 4-8% SDS-PAGE (link to IP-western blot protocol in Additional Info section below).</p> <p>Western blot of lysates performed using standard western blot reagents and 4-8% SDS-PAGE.</p>						
IHC MOUSE CONTROLS	Eye						
ADDITIONAL INFO	<p>https://www.bethyl.com/product/A302-446A</p> <p>Use the link above to view SDS, a current list of citations, and other product specific information.</p> <p>IP-western blot protocol: https://www.bethyl.com/content/protocol_IP_WB</p>						

This document certifies that this product has met all of the quality control standards defined by Bethyl Laboratories, Inc.

Eric McIntush, PhD | Chief Scientific Officer

Date: June 21, 2019



Detection of human and mouse PKC-alpha by western blot (h & m) and immunoprecipitation (h). *Samples:* Whole cell lysate from HeLa (5, 15 and 50 µg for WB; 1 mg for IP, 20% of IP loaded), HEK293T (T; 50 µg), and mouse NIH 3T3 (M; 50 µg) cells. *Antibodies:* Affinity purified rabbit anti-PKC-alpha antibody A302-446A used for WB at 0.04 µg/ml (A) and 1 µg/ml (B) and used for IP at 3 µg/mg lysate. PKC-alpha was also immunoprecipitated by rabbit anti-PKC-alpha antibody A302-445A, which recognizes an upstream epitope. *Detection:* Chemiluminescence with exposure times of 10 seconds (A) and 3 seconds (B).

Detection of mouse PKC-alpha by immunohistochemistry. *Sample:* FFPE section of mouse retina. *Antibody:* Affinity purified rabbit anti-PKC-alpha (Cat. No. A302-446A Lot1) used at a dilution of 1:100 (2µg/ml). *Detection:* Red-fluorescent goat anti-rabbit IgG-heavy and light chain cross-adsorbed Antibody DyLight® 594 Conjugated used at a dilution of 1:100. *Counterstain:* DAPI (blue)