

PKC- α Antibody

Rabbit Polyclonal

Antigen Affinity Purified

Catalog No. A302-445A

Lot No. A302-445A-1

Protein ID NP_002728.1

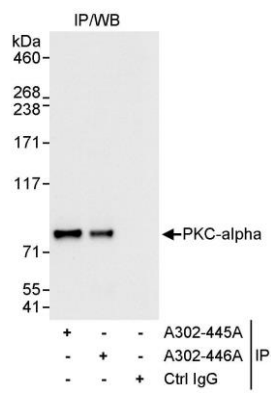
GeneID 5578



APPLICATIONS	IP
SPECIES REACTIVITY	Human
PRESUMED REACTIVITY	Based on 100% sequence identity, this antibody is predicted to react with Mouse, Rat and Rabbit
AMOUNT	100 μ l
CONCENTRATION	1000 μ g/ml
STORAGE/SHELF LIFE	2 – 8° C / 1 year from date of receipt
PHYSICAL STATE	Liquid
BUFFER	Tris-citrate/phosphate buffer, pH 7 to 8 containing 0.09% Sodium Azide
ISOTYPE	IgG
ORIGIN	USA
PRODUCTION PROCEDURES	<p>Antibody was affinity purified using an epitope specific to PKC-α immobilized on solid support.</p> <p>The epitope recognized by A302-445A maps to a region between residue 300 and 350 of human protein kinase C, α using the numbering given in entry NP_002728.1 (GeneID 5578).</p> <p>Antibody concentration was determined by extinction coefficient: absorbance at 280 nm of 1.4 equals 1.0 mg of IgG.</p>
APPLICATIONS	<p>Centrifuge tube to remove product from lid. Optimal working dilutions should be determined experimentally by the investigator. Prepare working dilution immediately before use.</p> <p>Western Blot Not recommended. Use rabbit anti-PKC-α antibody A302-446A.</p> <p>Immunoprecipitation 2 – 5 μg/mg lysate</p>
APPLICATION NOTES	Western blot of immunoprecipitates performed using Normal Pig Serum (Cat. No. S100-020), Goat anti-Rabbit Light Chain HRP Conjugate (Cat. No. A120-113P) and 4-8% SDS-PAGE (link to IP-western blot protocol in Additional Info section below).
ADDITIONAL INFO	<p>https://www.bethyl.com/product/A302-445A</p> <p>Use the link above to view SDS, a current list of citations, and other product specific information.</p> <p>IP-western blot protocol: https://www.bethyl.com/content/protocol_IP_WB</p>

This document certifies that this product has met all of the quality control standards defined by Bethyl Laboratories, Inc.
Eric McIntush, PhD | Chief Scientific Officer

Date: June 21, 2019



Detection of human PKC-alpha by western blot of immunoprecipitates. *Samples:* Whole cell lysate (1 mg for IP, 20% of IP loaded) from HeLa cells. *Antibodies:* Affinity purified rabbit anti-PKC-alpha antibody A302-445A used for IP at 3 µg/mg lysate. PKC-alpha was also immunoprecipitated by rabbit anti-PKC-alpha antibody A302-446A, which recognizes a downstream epitope. For blotting immunoprecipitated PKC-alpha, A302-446A was used at 1 µg/ml. *Detection:* Chemiluminescence with an exposure time of 3 seconds.