

MED13L Antibody

Rabbit Polyclonal

Antigen Affinity Purified

Protein ID NP_056150.1

Catalog No. A302-420A

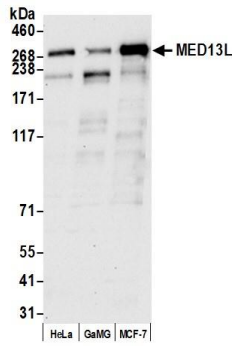
GeneID 23389

Lot No. A302-420A-3

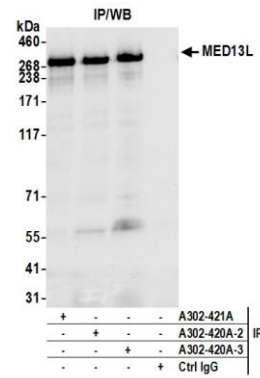


APPLICATIONS	WB, IP, IHC
SPECIES REACTIVITY	Human
AMOUNT	100 µl
CONCENTRATION	200 µg/ml
STORAGE/SHELF LIFE	2 – 8° C / 1 year from date of receipt
PHYSICAL STATE	Liquid
BUFFER	Tris-citrate/phosphate buffer, pH 7 to 8 containing 0.09% Sodium Azide
ISOTYPE	IgG
ORIGIN	USA
PRODUCTION PROCEDURES	<p>Antibody was affinity purified using an epitope specific to MED13L immobilized on solid support.</p> <p>The epitope recognized by A302-420A maps to a region between residue 550 and 600 of human mediator complex subunit 13-like using the numbering given in entry NP_056150.1 (GeneID 23389).</p> <p>Antibody concentration was determined by extinction coefficient: absorbance at 280 nm of 1.4 equals 1.0 mg of IgG.</p>
APPLICATIONS	<p>Centrifuge tube to remove product from lid. Optimal working dilutions should be determined experimentally by the investigator. Prepare working dilution immediately before use.</p> <p>Western Blot 1:2,000 – 1:10,000</p> <p>Immunoprecipitation 2 – 10 µg/mg lysate</p> <p>Immunohistochemistry 1:200 to 1:1000. Epitope retrieval with citrate buffer pH6.0 is recommended for FFPE tissue sections.</p>
APPLICATION NOTES	<p>Western blot of immunoprecipitates performed using Normal Pig Serum (Cat. No. S100-020), Goat anti-Rabbit Light Chain HRP Conjugate (Cat. No. A120-113P) and 4-8% SDS-PAGE (link to IP-western blot protocol in Additional Info section below).</p> <p>Western blot of lysates performed using standard western blot reagents and 4-8% SDS-PAGE.</p>
IHC HUMAN CONTROLS	Breast Carcinoma, Kidney Clear Cell Carcinoma, Ovarian Carcinoma, Testicular Seminoma
ADDITIONAL INFO	<p>https://www.bethyl.com/product/A302-420A</p> <p>Use the link above to view SDS, a current list of citations, and other product specific information. IP-western blot protocol https://www.bethyl.com/content/protocol_IP_WB</p>

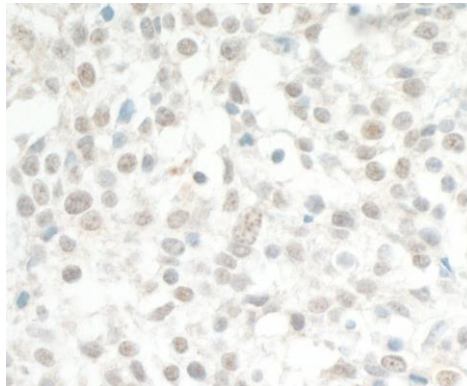
This document certifies that this product has met all of the quality control standards defined by Bethyl Laboratories, Inc.
Eric McIntush, PhD | Chief Scientific Officer Date: June 25, 2019



Detection of human MED13L by western blot. *Samples:* Whole cell lysate (15 µg) from HeLa, GaMG, and MCF-7 cells prepared using NETN lysis buffer. *Antibody:* Affinity purified Rabbit anti-MED13L antibody A302-420A (lot A302-420A-3) used for WB at 0.04 µg/ml. *Detection:* Chemiluminescence with an exposure time of 30 seconds.



Detection of human MED13L by western blot of immunoprecipitates. *Samples:* Whole cell lysate (1.0 mg per IP reaction; 20% of IP loaded) from HeLa cells prepared using NETN lysis buffer. *Antibodies:* Affinity purified Rabbit anti-MED13L antibody A302-420A (lot A302-420A-3) used for IP at 6 µg per reaction. MED13L was also immunoprecipitated by a previous lot of this antibody (lot A302-420A-2) and rabbit anti-MED13L antibody A302-421A For blotting immunoprecipitated MED13L, A302-420A was used at 0.04 µg/ml. Chemiluminescence with an exposure time of 30 seconds.



Detection of human MED13L by immunohistochemistry. *Sample:* FFPE section of human lung carcinoma. *Antibody:* Affinity purified rabbit anti-MED13L (Cat. No. A302-420 lot 3) used at 1:1,000 (0.2µg/ml). *Detection:* DAB