

SPECC1 Antibody

Rabbit Polyclonal

Antigen Affinity Purified

Protein ID NP_001028725.1

Catalog No. A302-413A

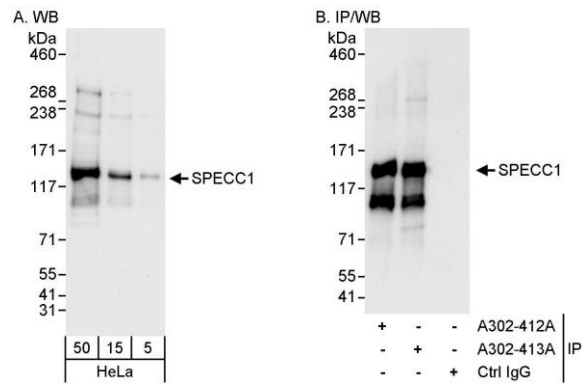
GeneID 92521

Lot No. A302-413A-1



APPLICATIONS	WB, IP
SPECIES REACTIVITY	Human
AMOUNT	100 µl
CONCENTRATION	200 µg/ml
STORAGE/SHELF LIFE	2 – 8° C / 1 year from date of receipt
PHYSICAL STATE	Liquid
BUFFER	Tris-buffered Saline containing 0.1% BSA and 0.09% Sodium Azide
ISOTYPE	IgG
ORIGIN	USA
PRODUCTION PROCEDURES	<p>Antibody was affinity purified using an epitope specific to SPECC1 immobilized on solid support.</p> <p>The epitope recognized by A302-413A maps to a region between residue 450 and 500 of human sperm antigen with calponin homology and coiled-coil domains 1 using the numbering given in entry NP_001028725.1 (GeneID 92521).</p> <p>Antibody concentration was determined by extinction coefficient: absorbance at 280 nm of 1.4 equals 1.0 mg of IgG.</p>
APPLICATIONS	<p>Centrifuge tube to remove product from lid. Optimal working dilutions should be determined experimentally by the investigator. Prepare working dilution immediately before use.</p> <p>Western Blot 1:2,000 – 1:10,000</p> <p>Immunoprecipitation 2 – 5 µg/mg lysate</p>
APPLICATION NOTES	<p>Western blot of immunoprecipitates performed using Normal Pig Serum (Cat. No. S100-020), Goat anti-Rabbit Light Chain HRP Conjugate (Cat. No. A120-113P) and 4-8% SDS-PAGE (link to IP-western blot protocol in Additional Info section below).</p> <p>Western blot of lysates performed using standard western blot reagents and 4-8% SDS-PAGE.</p>
ADDITIONAL INFO	<p>https://www.bethyl.com/product/A302-413A</p> <p>Use the link above to view SDS, a current list of citations, and other product specific information. IP-western blot protocol: https://www.bethyl.com/content/protocol_IP_WB</p>

This document certifies that this product has met all of the quality control standards defined by Bethyl Laboratories, Inc.
Eric McIntush, PhD | Chief Scientific Officer Date: June 21, 2019



Detection of human SPECC1 by western blot and immunoprecipitation. *Samples:* Whole cell lysate (5, 15 and 50 µg for WB; 1 mg for IP, 20% of IP loaded) from HeLa cells. *Antibodies:* Affinity purified rabbit anti-SPECC1 antibody A302-413A used for WB at 0.04 µg/ml (A) and 0.4 µg/ml (B) and used for IP at 3 µg/mg lysate. SPECC1 was also immunoprecipitated by rabbit anti-SPECC1 antibody A302-412A, which recognizes an upstream epitope. *Detection:* Chemiluminescence with exposure times of 30 seconds (A) and 10 seconds (B).