

NPM1 Antibody

Rabbit Polyclonal

Antigen Affinity Purified

Protein ID NP_002511.1

Catalog No. A302-402A

GeneID 4869

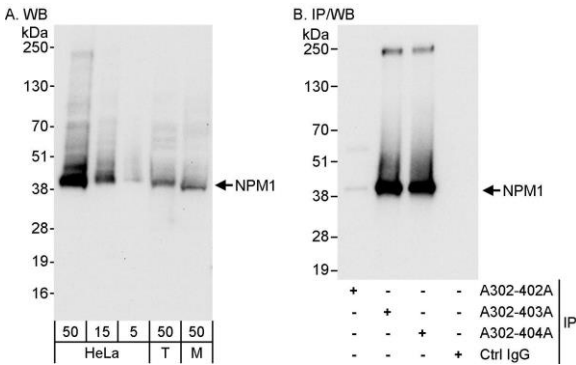
Lot No. A302-402A-1



APPLICATIONS	WB				
SPECIES REACTIVITY	Human, Mouse				
PRESUMED REACTIVITY	Based on 100% sequence identity, this antibody is predicted to react with Rat and Bovine				
AMOUNT	100 µl				
CONCENTRATION	200 µg/ml				
STORAGE/SHELF LIFE	2 – 8° C / 1 year from date of receipt				
PHYSICAL STATE	Liquid				
BUFFER	Tris-buffered Saline containing 0.1% BSA and 0.09% Sodium Azide				
ISOTYPE	IgG				
ORIGIN	USA				
PRODUCTION PROCEDURES	<p>Antibody was affinity purified using an epitope specific to NPM1 immobilized on solid support.</p> <p>The epitope recognized by A302-402A maps to a region between residue 100 and 150 of human nucleophosmin using the numbering given in entry NP_002511.1 (GeneID 4869).</p> <p>Antibody concentration was determined by extinction coefficient: absorbance at 280 nm of 1.4 equals 1.0 mg of IgG.</p>				
APPLICATIONS	<p>Centrifuge tube to remove product from lid. Optimal working dilutions should be determined experimentally by the investigator. Prepare working dilution immediately before use.</p> <table><tr><td>Western Blot</td><td>1:2,000 – 1:10,000</td></tr><tr><td>Immunoprecipitation</td><td>Not recommended. Use rabbit anti-NPM1 antibody A302-403A or A302-404A.</td></tr></table>	Western Blot	1:2,000 – 1:10,000	Immunoprecipitation	Not recommended. Use rabbit anti-NPM1 antibody A302-403A or A302-404A.
Western Blot	1:2,000 – 1:10,000				
Immunoprecipitation	Not recommended. Use rabbit anti-NPM1 antibody A302-403A or A302-404A.				
APPLICATION NOTES	Western blot of lysates performed using standard western blot reagents and 4–20% SDS-PAGE.				
IHC HUMAN CONTROLS	Breast Carcinoma, Colon Carcinoma, Ovarian Carcinoma, Prostate Carcinoma				
IHC MOUSE CONTROLS	Renal Cell Carcinoma, Teratoma				
ADDITIONAL INFO	<p>https://www.bethyl.com/product/A302-402A</p> <p>Use the link above to view SDS, a current list of citations, and other product specific information.</p>				

This document certifies that this product has met all of the quality control standards defined by Bethyl Laboratories, Inc.
Eric McIntush, PhD | Chief Scientific Officer

Date: June 21, 2019



Detection of human and mouse NPM1 by western blot (h & m) and immunoprecipitation (h). *Samples:* Whole cell lysate from HeLa (5, 15 and 50 µg for WB; 1 mg for IP, 20% of IP loaded), HEK293T (T; 50 µg), and mouse NIH 3T3 (M; 50 µg) cells. *Antibodies:* Affinity purified rabbit anti-NPM1 antibody A302-402A used for WB at 0.04 µg/ml (A) and 0.1 µg/ml (B) and used for IP at 10 µg/mg lysate. NPM1 was successfully immunoprecipitated by rabbit anti-NPM1 antibodies A302-403A and A302-404A, which recognize downstream epitopes. *Detection:* Chemiluminescence with exposure times of 30 seconds (A) and 3 seconds (B).