

CCDC28A Antibody

Rabbit Polyclonal

Antigen Affinity Purified

Protein ID NP_056254.1

Catalog No. A302-392A

GeneID 25901

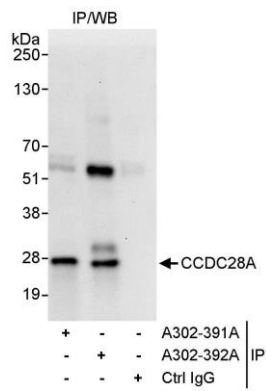
Lot No. A302-392A-1



APPLICATIONS	IP				
SPECIES REACTIVITY	Human				
AMOUNT	100 µl				
CONCENTRATION	1000 µg/ml				
STORAGE/SHELF LIFE	2 – 8° C / 1 year from date of receipt				
PHYSICAL STATE	Liquid				
BUFFER	Tris-citrate/phosphate buffer, pH 7 to 8 containing 0.09% Sodium Azide				
ISOTYPE	IgG				
ORIGIN	USA				
PRODUCTION PROCEDURES	<p>Antibody was affinity purified using an epitope specific to CCDC28A immobilized on solid support.</p> <p>The epitope recognized by A302-392A maps to a region between residue 224 and 274 of human coiled-coil domain containing 28A using the numbering given in entry NP_056254.1 (GeneID 25901).</p> <p>Antibody concentration was determined by extinction coefficient: absorbance at 280 nm of 1.4 equals 1.0 mg of IgG.</p>				
APPLICATIONS	<p>Centrifuge tube to remove product from lid. Optimal working dilutions should be determined experimentally by the investigator. Prepare working dilution immediately before use.</p> <table><tr><td>Western Blot</td><td>Not recommended. A302-392A has not performed satisfactorily when used for WB of CCDC28A in crude preparations (e.g. whole cell lysate). This antibody can be used for WB of enriched (e.g. immunoprecipitated) sources of CCDC28A.</td></tr><tr><td>Immunoprecipitation</td><td>5 – 10 µg/mg lysate</td></tr></table>	Western Blot	Not recommended. A302-392A has not performed satisfactorily when used for WB of CCDC28A in crude preparations (e.g. whole cell lysate). This antibody can be used for WB of enriched (e.g. immunoprecipitated) sources of CCDC28A.	Immunoprecipitation	5 – 10 µg/mg lysate
Western Blot	Not recommended. A302-392A has not performed satisfactorily when used for WB of CCDC28A in crude preparations (e.g. whole cell lysate). This antibody can be used for WB of enriched (e.g. immunoprecipitated) sources of CCDC28A.				
Immunoprecipitation	5 – 10 µg/mg lysate				
APPLICATION NOTES	Western blot of immunoprecipitates performed using Normal Pig Serum (Cat. No. S100-020), Goat anti-Rabbit Light Chain HRP Conjugate (Cat. No. A120-113P) and 4-20% SDS-PAGE (link to IP-western blot protocol in Additional Info section below).				
ADDITIONAL INFO	<p>https://www.bethyl.com/product/A302-392A</p> <p>Use the link above to view SDS, a current list of citations, and other product specific information.</p> <p>IP-western blot protocol: https://www.bethyl.com/content/protocol_IP_WB</p>				

This document certifies that this product has met all of the quality control standards defined by Bethyl Laboratories, Inc.
Eric McIntush, PhD | Chief Scientific Officer

Date: June 21, 2019



Detection of human CCDC28A by western blot of immunoprecipitates. *Samples:* Whole cell lysate (1 mg for IP, 20% of IP loaded) from HeLa cells. *Antibodies:* Affinity purified rabbit anti-CCDC28A antibody A302-392A used for IP at 10 µg/mg lysate. CCDC28A was also immunoprecipitated by rabbit anti-CCDC28A antibody A302-391A, which recognizes a downstream epitope. For blotting immunoprecipitated CCDC28A, A302-392A was used at 1 µg/ml. *Detection:* Chemiluminescence with an exposure time of 10 seconds.