

# ANKRD52 Antibody

Rabbit Polyclonal

Antigen Affinity Purified

Protein ID EAW96919.1

Catalog No. A302-372A

GeneID 283373

Lot No. A302-372A-1



<b>APPLICATIONS</b>	IP
<b>SPECIES REACTIVITY</b>	Human
<b>AMOUNT</b>	100 µl
<b>CONCENTRATION</b>	1000 µg/ml
<b>STORAGE/SHELF LIFE</b>	2 - 8° C / 1 year from date of receipt
<b>PHYSICAL STATE</b>	Liquid
<b>BUFFER</b>	Tris-citrate/phosphate buffer, pH 7 to 8 containing 0.09% Sodium Azide
<b>ISOTYPE</b>	IgG
<b>ORIGIN</b>	USA
<b>PRODUCTION PROCEDURES</b>	Antibody was affinity purified using an epitope specific to ANKRD52 immobilized on solid support.

The epitope recognized by A302-372A maps to a region between residue 500 and 550 of human ankyrin repeat domain-containing protein 52 using the numbering given in entry EAW96919.1 (GeneID 283373).

Antibody concentration was determined by extinction coefficient: absorbance at 280 nm of 1.4 equals 1.0 mg of IgG.

**APPLICATIONS** Centrifuge tube to remove product from lid. Optimal working dilutions should be determined experimentally by the investigator. Prepare working dilution immediately before use.

Western Blot Not recommended. A302-372A has not performed satisfactorily when used for WB of ANKRD52 in crude preparations (e.g. whole cell lysate). This antibody can be used for WB of enriched (e.g. immunoprecipitated) sources of ANKRD52.

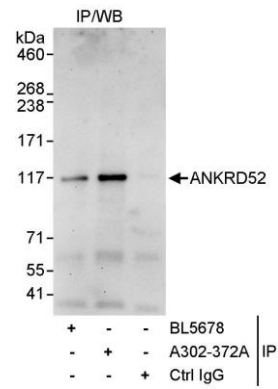
Immunoprecipitation 5 - 10 µg/mg lysate

**APPLICATION NOTES** Western blot of immunoprecipitates performed using Normal Pig Serum (Cat. No. S100-020), Goat anti-Rabbit Light Chain HRP Conjugate (Cat. No. A120-113P) and 4-8% SDS-PAGE (link to IP-western blot protocol in Additional Info section below).

**ADDITIONAL INFO** <https://www.bethyl.com/product/A302-372A>

Use the link above to view SDS, a current list of citations, and other product specific information. IP-western blot protocol: [https://www.bethyl.com/content/protocol\\_IP\\_WB](https://www.bethyl.com/content/protocol_IP_WB)

This document certifies that this product has met all of the quality control standards defined by Bethyl Laboratories, Inc.  
Eric McIntush, PhD | Chief Scientific Officer Date: June 21, 2019



**Detection of human ANKRD52 by western blot of immunoprecipitates.** *Samples:* Whole cell lysate (1 mg for IP, 20% of IP loaded) from HeLa cells. *Antibodies:* Affinity purified rabbit anti-ANKRD52 antibody A302-372A used for IP at 10  $\mu\text{g}/\text{mg}$  lysate. ANKRD52 was also immunoprecipitated by rabbit anti-ANKRD52 antibody BL5678, which recognizes a downstream epitope. For blotting immunoprecipitated ANKRD52, A302-372A was used at 1  $\mu\text{g}/\text{ml}$ . *Detection:* Chemiluminescence with an exposure time of 30 seconds.