

CRSP7 Antibody

Rabbit Polyclonal

Antigen Affinity Purified

Protein ID NP_004822.2

Catalog No. A302-370A

GeneID 9441

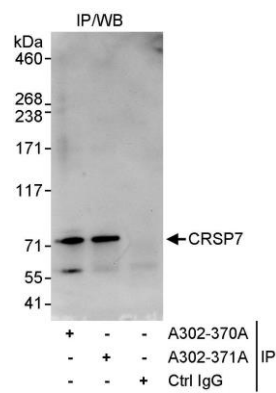
Lot No. A302-370A-1



| | | | | | |
|------------------------------|--|--------------|--|---------------------|---------------------|
| APPLICATIONS | IP | | | | |
| SPECIES REACTIVITY | Human | | | | |
| PRESUMED REACTIVITY | Based on 100% sequence identity, this antibody is predicted to react with X. laevis and Bovine | | | | |
| AMOUNT | 100 µl | | | | |
| CONCENTRATION | 1000 µg/ml | | | | |
| STORAGE/SHELF LIFE | 2 – 8° C / 1 year from date of receipt | | | | |
| PHYSICAL STATE | Liquid | | | | |
| BUFFER | Tris-citrate/phosphate buffer, pH 7 to 8 containing 0.09% Sodium Azide | | | | |
| ISOTYPE | IgG | | | | |
| ORIGIN | USA | | | | |
| PRODUCTION PROCEDURES | <p>Antibody was affinity purified using an epitope specific to CRSP7 immobilized on solid support.</p> <p>The epitope recognized by A302-370A maps to a region between residue 1 and 50 of human cofactor required for Sp1 transcriptional activation, subunit 7 using the numbering given in entry NP_004822.2 (GeneID 9441).</p> <p>Antibody concentration was determined by extinction coefficient: absorbance at 280 nm of 1.4 equals 1.0 mg of IgG.</p> | | | | |
| APPLICATIONS | <p>Centrifuge tube to remove product from lid. Optimal working dilutions should be determined experimentally by the investigator. Prepare working dilution immediately before use.</p> <table><tr><td>Western Blot</td><td>Not recommended. A302-370A has not performed satisfactorily when used for WB of CRSP7 in crude preparations (e.g. whole cell lysate). This antibody can be used for WB of enriched (e.g. immunoprecipitated) sources of CRSP7.</td></tr><tr><td>Immunoprecipitation</td><td>5 – 10 µg/mg lysate</td></tr></table> | Western Blot | Not recommended. A302-370A has not performed satisfactorily when used for WB of CRSP7 in crude preparations (e.g. whole cell lysate). This antibody can be used for WB of enriched (e.g. immunoprecipitated) sources of CRSP7. | Immunoprecipitation | 5 – 10 µg/mg lysate |
| Western Blot | Not recommended. A302-370A has not performed satisfactorily when used for WB of CRSP7 in crude preparations (e.g. whole cell lysate). This antibody can be used for WB of enriched (e.g. immunoprecipitated) sources of CRSP7. | | | | |
| Immunoprecipitation | 5 – 10 µg/mg lysate | | | | |
| APPLICATION NOTES | Western blot of immunoprecipitates performed using Normal Pig Serum (Cat. No. S100-020), Goat anti-Rabbit Light Chain HRP Conjugate (Cat. No. A120-113P) and 4-8% SDS-PAGE (link to IP-western blot protocol in Additional Info section below). | | | | |
| ADDITIONAL INFO | <p>https://www.bethyl.com/product/A302-370A</p> <p>Use the link above to view SDS, a current list of citations, and other product specific information.</p> <p>IP-western blot protocol: https://www.bethyl.com/content/protocol_IP_WB</p> | | | | |

This document certifies that this product has met all of the quality control standards defined by Bethyl Laboratories, Inc.
Eric McIntush, PhD | Chief Scientific Officer

Date: June 21, 2019



Detection of human CRSP7 by western blot of immunoprecipitates. *Samples:* Whole cell lysate (1 mg for IP, 20% of IP loaded) from HeLa cells. *Antibodies:* Affinity purified rabbit anti-CRSP7 antibody A302-370A used for IP at 10 µg/mg lysate. CRSP7 was also immunoprecipitated by rabbit anti-CRSP7 antibody A302-371A, which recognizes a downstream epitope. For blotting immunoprecipitated CRSP7, A302-370A was used at 0.4 µg/ml. *Detection:* Chemiluminescence with an exposure time of 15 seconds.