

# BRD3 Antibody

Rabbit Polyclonal

Antigen Affinity Purified

Protein ID NP\_031397.1

Catalog No. A302-368A

GeneID 8019

Lot No. A302-368A-3



**APPLICATIONS** WB, IP, IHC

**SPECIES REACTIVITY** Human

**AMOUNT** 100 µl

**CONCENTRATION** 200 µg/ml

**STORAGE/SHELF LIFE** 2 – 8° C / 1 year from date of receipt

**PHYSICAL STATE** Liquid

**BUFFER** Tris-buffered Saline containing 0.1% BSA and 0.09% Sodium Azide

**ISOTYPE** IgG

**ORIGIN** USA

**PRODUCTION PROCEDURES** Antibody was affinity purified using an epitope specific to BRD3 immobilized on solid support.

The epitope recognized by A302-368A maps to a region between residue 676 and 726 of human bromodomain containing 3 using the numbering given in entry NP\_031397.1 (GeneID 8019).

Antibody concentration was determined by extinction coefficient: absorbance at 280 nm of 1.4 equals 1.0 mg of IgG.

**APPLICATIONS** Centrifuge tube to remove product from lid. Optimal working dilutions should be determined experimentally by the investigator. Prepare working dilution immediately before use.

Western Blot 1:2,000 – 1:10,000

Immunoprecipitation 5 – 10 µg/mg lysate

Immunohistochemistry 1:100 to 1:500. Epitope retrieval with citrate buffer pH6.0 is recommended for FFPE tissue sections.

**APPLICATION NOTES** Western blot of immunoprecipitates performed using Normal Pig Serum (Cat. No. S100-020), Goat anti-Rabbit Light Chain HRP Conjugate (Cat. No. A120-113P) and 4-8% SDS-PAGE (link to IP-western blot protocol in Additional Info section below).

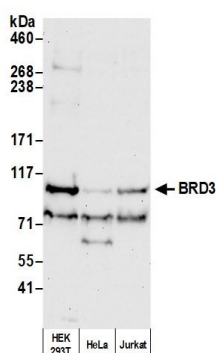
**IHC HUMAN CONTROLS** Western blot of lysates performed using standard western blot reagents and 4-8% SDS-PAGE. Breast Carcinoma, Prostate Carcinoma

**ADDITIONAL INFO** <https://www.bethyl.com/product/A302-368A>

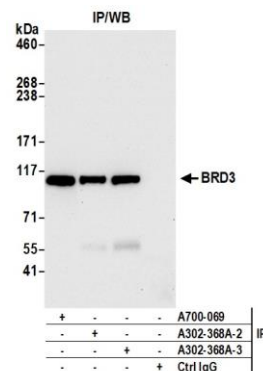
Use the link above to view SDS, a current list of citations, and other product specific information.

IP-western blot protocol: [https://www.bethyl.com/content/protocol\\_IP\\_WB](https://www.bethyl.com/content/protocol_IP_WB)

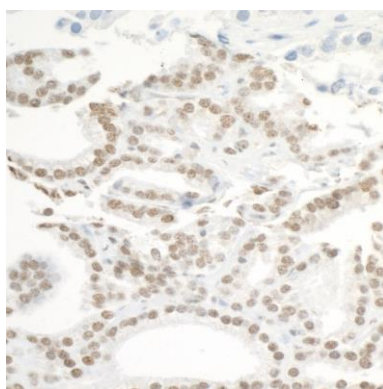
This document certifies that this product has met all of the quality control standards defined by Bethyl Laboratories, Inc.  
Eric McIntush, PhD | Chief Scientific Officer Date: February 28, 2020



**Detection of human BRD3 by western blot.** *Samples:* Whole cell lysate (50  $\mu$ g) from HEK293T, HeLa, and Jurkat cells prepared using NETN lysis buffer. *Antibody:* Affinity purified rabbit anti-BRD3 antibody A302-368A (lot A302-368A-3) used for WB at 0.04  $\mu$ g/ml. *Detection:* Chemiluminescence with an exposure time of 30 seconds.



**Detection of human BRD3 by western blot of immunoprecipitates.** *Samples:* Whole cell lysate (1.0 mg per IP reaction; 20% of IP loaded) from HEK293T cells prepared using NETN lysis buffer. *Antibodies:* Affinity purified rabbit anti-BRD3 antibody A302-368A (lot A302-368A-3) used for IP at 6  $\mu$ g per reaction. BRD3 was also immunoprecipitated by a previous lot of this antibody (lot A302-368A-2) and rabbit recombinant monoclonal anti-BRD3 antibody A700-069. For blotting immunoprecipitated BRD3, A700-069 was used at 1K. *Detection:* Chemiluminescence with an exposure time of 10 seconds.



**Detection of human BRD3 by immunohistochemistry.**  
**Sample:** FFPE section of human prostate carcinoma.  
*Antibody:* Affinity purified rabbit anti-BRD3 (A302-368A Lot 3) used at a dilution of 1:200 (1  $\mu$ g/ml). *Detection:* DAB