

BRD3 Antibody

Rabbit Polyclonal

Antigen Affinity Purified

Protein ID NP_031397.1

Catalog No. A302-368A-T

GeneID 8019

Lot No. A302-368A-T-3



APPLICATIONS WB, IP, IHC

SPECIES REACTIVITY Human

AMOUNT 20 µl (2 blots)

CONCENTRATION 100 µg/ml

STORAGE/SHELF LIFE 2 - 8° C / 1 year from date of receipt

PHYSICAL STATE Liquid

BUFFER Tris-buffered Saline containing 0.1% BSA and 0.09% Sodium Azide

ISOTYPE IgG

ORIGIN USA

PRODUCTION PROCEDURES Antibody was affinity purified using an epitope specific to BRD3 immobilized on solid support.

The epitope recognized by A302-368A-T maps to a region between residue 676 and 726 of human bromodomain containing 3 using the numbering given in entry NP_031397.1 (GeneID 8019).

APPLICATIONS Centrifuge tube to remove product from lid. Optimal working dilutions should be determined experimentally by the investigator. Prepare working dilution immediately before use.

Western Blot 1:1000

Immunoprecipitation The antibody contained within A302-368A-T has been qualified for use in immunoprecipitation; however, we recommend using the alternative formulation of this antibody found as product A302-368A.

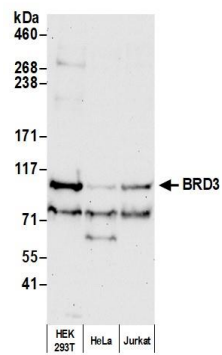
Immunohistochemistry 1:20 to 1:100. Epitope retrieval with citrate buffer pH6.0 is recommended for FFPE tissue sections.

APPLICATION NOTES Western blot of immunoprecipitates performed using Normal Pig Serum (Cat. No. S100-020), Goat anti-Rabbit Light Chain HRP Conjugate (Cat. No. A120-113P) and 4-8% SDS-PAGE (link to IP-western blot protocol in Additional Info section below).

ADDITIONAL INFO Western blot of lysates performed using standard western blot reagents and 4-8% SDS-PAGE. <https://www.bethyl.com/product/A302-368A-T>

Use the link above to view SDS, a current list of citations, and other product specific information. IP-western blot protocol: https://www.bethyl.com/content/protocol_IP_WB

This document certifies that this product has met all of the quality control standards defined by Bethyl Laboratories, Inc.
Eric McIntush, PhD | Chief Scientific Officer Date: February 28, 2020



Detection of human BRD3 by western blot. *Samples:* Whole cell lysate (50 μ g) from HEK293T, HeLa, and Jurkat cells prepared using NETN lysis buffer. *Antibody:* Affinity purified rabbit anti-BRD3 antibody A302-368A-T (lot A302-368A-T-3) used at 1:1000. *Detection:* Chemiluminescence with an exposure time of 30 seconds.