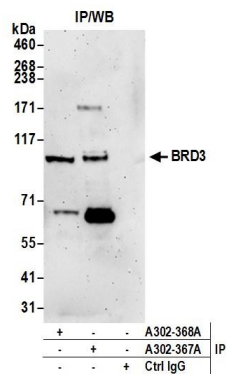




APPLICATIONS	IP				
SPECIES REACTIVITY	Human				
PRESUMED REACTIVITY	Based on 100% sequence identity, this antibody is predicted to react with Mouse				
AMOUNT	100 µl				
CONCENTRATION	1000 µg/ml				
STORAGE/SHELF LIFE	2 – 8° C / 1 year from date of receipt				
PHYSICAL STATE	Liquid				
BUFFER	Tris–citrate/phosphate buffer, pH 7 to 8 containing 0.09% Sodium Azide				
ISOTYPE	IgG				
ORIGIN	USA				
PRODUCTION PROCEDURES	<p>Antibody was affinity purified using an epitope specific to BRD3 immobilized on solid support.</p> <p>The epitope recognized by A302–367A maps to a region between residue 275 and 325 of human bromodomain containing 3 using the numbering given in entry NP_031397.1 (GenelD 8019).</p> <p>Antibody concentration was determined by extinction coefficient: absorbance at 280 nm of 1.4 equals 1.0 mg of IgG.</p>				
APPLICATIONS	<p>Centrifuge tube to remove product from lid. Optimal working dilutions should be determined experimentally by the investigator. Prepare working dilution immediately before use.</p> <table><tr><td>Western Blot</td><td>Not recommended. Use rabbit anti–BRD3 antibody A302–368A.</td></tr><tr><td>Immunoprecipitation</td><td>5 – 10 µg/mg lysate</td></tr></table>	Western Blot	Not recommended. Use rabbit anti–BRD3 antibody A302–368A.	Immunoprecipitation	5 – 10 µg/mg lysate
Western Blot	Not recommended. Use rabbit anti–BRD3 antibody A302–368A.				
Immunoprecipitation	5 – 10 µg/mg lysate				
APPLICATION NOTES	Western blot of immunoprecipitates performed using Normal Pig Serum (Cat. No. S100–020), Goat anti–Rabbit Light Chain HRP Conjugate (Cat. No. A120–113P) and 4–8% SDS–PAGE (link to IP–western blot protocol in Additional Info section below).				
ADDITIONAL INFO	<p>https://www.bethyl.com/product/A302–367A</p> <p>Use the link above to view SDS, a current list of citations, and other product specific information.</p> <p>IP–western blot protocol: https://www.bethyl.com/content/protocol_IP_WB</p>				

This document certifies that this product has met all of the quality control standards defined by Bethyl Laboratories, Inc.
Eric McIntush, PhD | Chief Scientific Officer Date: June 21, 2019



Detection of human BRD3 by western blot of immunoprecipitates. Samples: Whole cell lysate (1.0 mg per IP reaction; 20% of IP loaded) from HeLa cells prepared using NETN lysis buffer. Antibodies: Affinity purified rabbit anti-BRD3 antibody A302-367A (lot A302-367A-2) used for IP at 3 µg per reaction. BRD3 was also immunoprecipitated by rabbit anti-BRD3 antibody A302-368A. For blotting immunoprecipitated BRD3, A302-367A was used at 1 µg/ml. Detection: Chemiluminescence with an exposure time of 3 minutes.