

BRD1 Antibody

Rabbit Polyclonal

Antigen Affinity Purified Protein ID NP_055392.1

Catalog No. A302-366A GeneID 23774

Lot No. A302-366A-3

APPLICATIONS	WB, IP
SPECIES REACTIVITY	Human
AMOUNT	100 µl
CONCENTRATION	200 µg/ml
STORAGE/SHELF LIFE	2 – 8°C / 1 year from date of receipt
PHYSICAL STATE	Liquid
BUFFER	Tris-buffered Saline containing 0.1% BSA and 0.09% Sodium Azide
ISOTYPE	IgG
ORIGIN	USA
PRODUCTION PROCEDURES	Antibody was affinity purified using an epitope specific to BRD1 immobilized on solid support.

The epitope recognized by A302-366A maps to a region between residue 750 and 800 of human bromodomain containing 1 using the numbering given in entry NP_055392.1 (GeneID 23774).

Antibody concentration was determined by extinction coefficient: absorbance at 280 nm of 1.4 equals 1.0 mg of IgG.

APPLICATIONS Centrifuge tube to remove product from lid. Optimal working dilutions should be determined experimentally by the investigator. Prepare working dilution immediately before use.

Western Blot 1:2,000 – 1:10,000

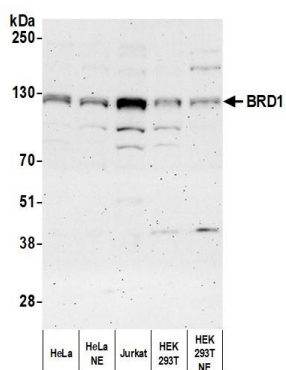
Immunoprecipitation 2 – 10 µg/mg lysate

ADDITIONAL INFO <https://www.bethyl.com/product/A302-366A>

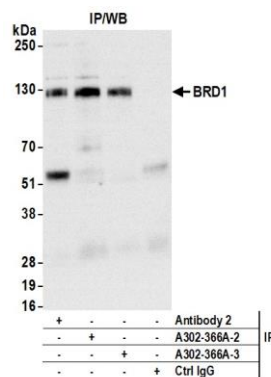
Use the link above to view SDS, a current list of citations, and other product specific information.

IP-western blot protocol: https://www.bethyl.com/content/protocol_IP_WB

This document certifies that this product has met all of the quality control standards defined by Bethyl Laboratories, Inc.
Michael Spencer, PhD Date: June 2, 2022



Detection of human BRD1 by western blot. *Samples:* Whole cell lysate (25 μ g) from HeLa, HeLa nuclear extract (NE), Jurkat, HEK293T, and HEK293T nuclear extract (NE) cells prepared using NETN lysis buffer. *Antibody:* Affinity purified rabbit anti-BRD1 antibody (A302-366A lot 3) used for WB at 0.04 μ g/ml. *Detection:* Chemiluminescence with an exposure time of 3 minutes.



Detection of human BRD1 by western blot of immunoprecipitates. *Samples:* Whole cell lysate (1.0 mg per IP reaction; 10% of IP loaded) from HeLa cells prepared using NETN lysis buffer. *Antibodies:* Affinity purified rabbit anti-BRD1 antibody (A302-366A lot 3) used for IP at 6 μ g per reaction. BRD1 was also immunoprecipitated by a previous lot of this antibody (A302-366A lot 2) and a second antibody against a different epitope of BRD1 (Antibody 2). For blotting immunoprecipitated BRD1, A302-366A was used at 0.04 μ g/ml. *Detection:* Chemiluminescence with an exposure time of 30 seconds.