

# Pc2 Antibody

Rabbit Polyclonal

Antigen Affinity Purified	Protein ID	NP_003646.2
Catalog No. A302-355A	GeneID	8535
Lot No. A302-355A-2		

---

<b>APPLICATIONS</b>	WB, IP, IHC
<b>SPECIES REACTIVITY</b>	Human, Mouse
<b>AMOUNT</b>	100 µl
<b>CONCENTRATION</b>	1000 µg/ml
<b>STORAGE/SHELF LIFE</b>	2 – 8°C / 1 year from date of receipt
<b>PHYSICAL STATE</b>	Liquid
<b>BUFFER</b>	Tris-citrate/phosphate buffer, pH 7 to 8 containing 0.09% Sodium Azide
<b>ISOTYPE</b>	IgG
<b>ORIGIN</b>	USA
<b>PRODUCTION PROCEDURES</b>	Antibody was affinity purified using an epitope specific to Pc2 immobilized on solid support.

The epitope recognized by A302-355A maps to a region between residue 150 and 200 of human polycomb 2 (chromobox homolog 4 ) using the numbering given in entry NP\_003646.2 (GeneID 8535).

Antibody concentration was determined by extinction coefficient: absorbance at 280 nm of 1.4 equals 1.0 mg of IgG.

**APPLICATIONS** Centrifuge tube to remove product from lid. Optimal working dilutions should be determined experimentally by the investigator. Prepare working dilution immediately before use.

Western Blot 1:2,000 – 1:10,000

Immunoprecipitation 2 – 10 µg/mg lysate

Immunohistochemistry 1:500 to 1:2,000. Epitope retrieval with citrate buffer pH6.0 is recommended for FFPE tissue sections.

**IHC HUMAN CONTROLS** Bladder Cell Carcinoma, Breast Carcinoma, Prostate Carcinoma

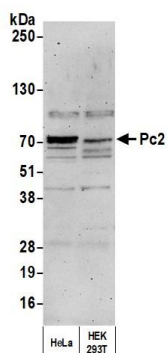
**IHC MOUSE CONTROLS** Renal Cell Carcinoma, Teratoma

**ADDITIONAL INFO** <https://www.bethyl.com/product/A302-355A>

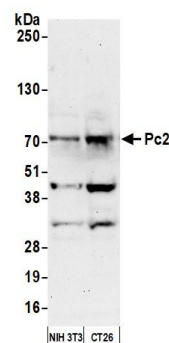
Use the link above to view SDS, a current list of citations, and other product specific information.

IP-western blot protocol: [https://www.bethyl.com/content/protocol\\_IP\\_WB](https://www.bethyl.com/content/protocol_IP_WB)

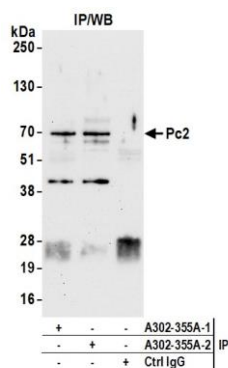
This document certifies that this product has met all of the quality control standards defined by Bethyl Laboratories, Inc.  
Michael Spencer, PhD Date: March 8, 2022



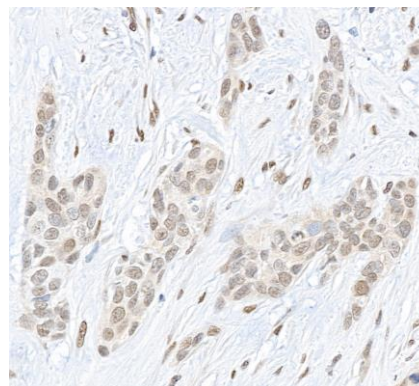
**Detection of human Pc2 by western blot.** *Samples:* Whole cell lysate (10  $\mu$ g) from HeLa and HEK293T cells prepared using NETN lysis buffer. *Antibody:* Affinity purified rabbit anti-Pc2 antibody (A302-355A lot 2) used for WB at 0.1  $\mu$ g/ml. *Detection:* Chemiluminescence with an exposure time of 3 minutes.



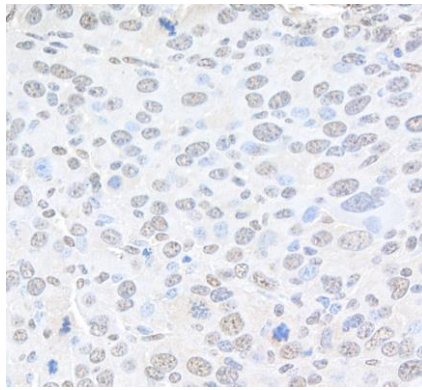
**Detection of mouse Pc2 by western blot.** *Samples:* Whole cell lysate (50  $\mu$ g) from NIH 3T3 and CT26 cells prepared using NETN lysis buffer. *Antibody:* Affinity purified rabbit anti-Pc2 antibody (A302-355A lot 2) used for WB at 0.1  $\mu$ g/ml. *Detection:* Chemiluminescence with an exposure time of 75 seconds.



**Detection of human Pc2 by western blot of immunoprecipitates.** *Samples:* Whole cell lysate (1.0 mg per IP reaction; 20% of IP loaded) from HeLa cells prepared using NETN lysis buffer. *Antibodies:* Affinity purified rabbit anti-Pc2 antibody (A302-355A lot 2) used for IP at 6  $\mu$ g per reaction. Pc2 was also immunoprecipitated by a previous lot of this antibody (A302-355A lot 1). For blotting immunoprecipitated Pc2, A302-355A was used at 0.1  $\mu$ g/ml. *Detection:* Chemiluminescence with an exposure time of 30 seconds.



**Detection of human Pc2 by immunohistochemistry.** *Sample:* FFPE section of human bladder carcinoma. *Antibody:* Affinity purified rabbit anti-Pc2 (A302-355A Lot 2) used at a dilution of 1:1,000 (1  $\mu$ g/ml). *Detection:* DAB



**Detection of mouse Pc2 by immunohistochemistry.**

*Sample:* FFPE section of mouse renal cell carcinoma.

*Antibody:* Affinity purified rabbit anti- Pc2 (A302-355A Lot 2) used at a dilution of 1:1,000 (1 µg/ml).

*Detection:* DAB