

# Septin 9 Antibody

Rabbit Polyclonal

Antigen Affinity Purified

Protein ID NP\_001106963.1

Catalog No. A302-354A

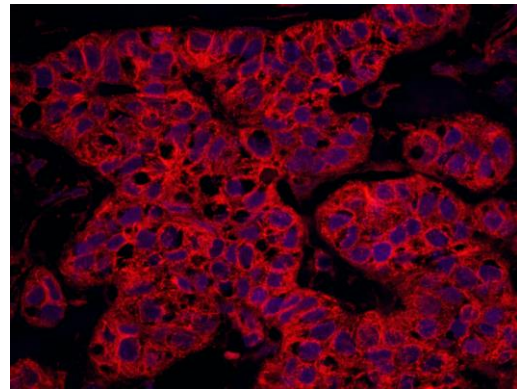
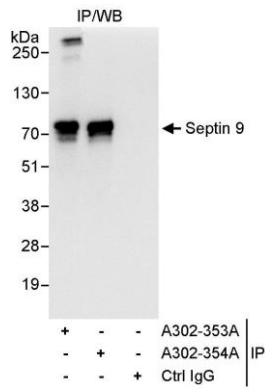
GeneID 10801

Lot No. A302-354A-1



<b>APPLICATIONS</b>	IP, IHC-IF						
<b>SPECIES REACTIVITY</b>	Human						
<b>AMOUNT</b>	100 µl						
<b>CONCENTRATION</b>	1000 µg/ml						
<b>STORAGE/SHELF LIFE</b>	2 - 8° C / 1 year from date of receipt						
<b>PHYSICAL STATE</b>	Liquid						
<b>BUFFER</b>	Tris-citrate/phosphate buffer, pH 7 to 8 containing 0.09% Sodium Azide						
<b>ISOTYPE</b>	IgG						
<b>ORIGIN</b>	USA						
<b>PRODUCTION PROCEDURES</b>	<p>Antibody was affinity purified using an epitope specific to Septin 9 immobilized on solid support.</p> <p>The epitope recognized by A302-354A maps to a region between residue 536 and 586 of human septin 9 using the numbering given in entry NP_001106963.1 (GeneID 10801).</p> <p>Immunoglobulin concentration was determined by extinction coefficient: absorbance at 280 nm of 1.4 equals 1.0 mg of IgG.</p>						
<b>APPLICATIONS</b>	<p>Centrifuge tube to remove product from lid. Optimal working dilutions should be determined experimentally by the investigator. Prepare working dilution immediately before use.</p> <table><tr><td>Western Blot</td><td>Not recommended. Use rabbit anti-Septin 9 antibody A302-353A.</td></tr><tr><td>Immunoprecipitation</td><td>2 - 5 µg/mg lysate</td></tr><tr><td>Immunofluorescence (IHC)</td><td>1:1,000 - 1:5,000</td></tr></table>	Western Blot	Not recommended. Use rabbit anti-Septin 9 antibody A302-353A.	Immunoprecipitation	2 - 5 µg/mg lysate	Immunofluorescence (IHC)	1:1,000 - 1:5,000
Western Blot	Not recommended. Use rabbit anti-Septin 9 antibody A302-353A.						
Immunoprecipitation	2 - 5 µg/mg lysate						
Immunofluorescence (IHC)	1:1,000 - 1:5,000						
<b>APPLICATION NOTES</b>	Western blot of immunoprecipitates performed using Normal Pig Serum (Cat. No. S100-020), Goat anti-Rabbit Light Chain HRP Conjugate (Cat. No. A120-113P) and 4-20% SDS-PAGE (link to IP-western blot protocol in Additional Info section below).						
<b>IHC HUMAN CONTROLS</b>	Breast Carcinoma, Colon Carcinoma, Ovarian Carcinoma, Prostate Carcinoma						
<b>ADDITIONAL INFO</b>	<p><a href="https://www.bethyl.com/product/A302-354A">https://www.bethyl.com/product/A302-354A</a></p> <p>Use the link above to view SDS, a current list of citations, and other product specific information.</p> <p>IP-western blot protocol: <a href="https://www.bethyl.com/content/protocol_IP_WB">https://www.bethyl.com/content/protocol_IP_WB</a></p>						

This document certifies that this product has met all of the quality control standards defined by Bethyl Laboratories, Inc.  
Eric McIntush, PhD | Chief Scientific Officer Date: June 21, 2019



**Detection of human Septin 9 by western blot of immunoprecipitates.** *Samples:* Whole cell lysate (1 mg for IP, 20% of IP loaded) from HeLa cells. *Antibodies:* Affinity purified rabbit anti-Septin 9 antibody A302-354A used for IP at 3  $\mu$ g/mg lysate. Septin 9 was also immunoprecipitated by rabbit anti-Septin 9 antibody A302-353A, which recognizes an upstream epitope. For blotting immunoprecipitated Septin 9, A302-353A was used at 1  $\mu$ g/ml. *Detection:* Chemiluminescence with an exposure time of 1 second.

**Detection of human Septin 9 by immunohistochemistry.** *Sample:* FFPE section of human breast carcinoma. *Antibody:* Affinity purified rabbit anti-Septin 9 (Cat. No. A302-354A Lot1) used at a dilution of 1:1,000 (1  $\mu$ g/ml). *Detection:* Red-fluorescent goat anti-rabbit IgG-heavy and light chain cross-adsorbed Antibody DyLight® 594 Conjugated used at a dilution of 1:100.