

Endophilin A2 Antibody



Rabbit Polyclonal

Antigen Affinity Purified

Protein ID NP_003016.1

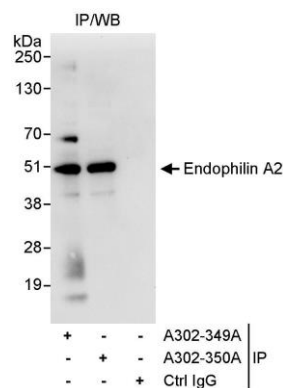
Catalog No. A302-350A

GeneID 6455

Lot No. A302-350A-1

APPLICATIONS	IP
SPECIES REACTIVITY	Human
AMOUNT	100 μ l
CONCENTRATION	1000 μ g/ml
STORAGE/SHELF LIFE	2 - 8° C / 1 year from date of receipt
PHYSICAL STATE	Liquid
BUFFER	Tris-citrate/phosphate buffer, pH 7 to 8 containing 0.09% Sodium Azide
ISOTYPE	IgG
ORIGIN	USA
PRODUCTION PROCEDURES	Antibody was affinity purified using an epitope specific to Endophilin A2 immobilized on solid support. The epitope recognized by A302-350A maps to a region between residue 275 and 325 of human endophilin A2 using the numbering given in entry NP_003016.1 (GeneID 6455). Immunoglobulin concentration was determined by extinction coefficient: absorbance at 280 nm of 1.4 equals 1.0 mg of IgG.
APPLICATIONS	Centrifuge tube to remove product from lid. Optimal working dilutions should be determined experimentally by the investigator. Prepare working dilution immediately before use. Western Blot Not recommended. Use rabbit anti-Endophilin A2 antibody A302-349A. Immunoprecipitation 2 - 5 μ g/mg lysate
APPLICATION NOTES	Western blot of immunoprecipitates performed using Normal Pig Serum (Cat. No. S100-020), Goat anti-Rabbit Light Chain HRP Conjugate (Cat. No. A120-113P) and 4-20% SDS-PAGE (link to IP-western blot protocol in Additional Info section below).
ADDITIONAL INFO	https://www.bethyl.com/product/A302-350A Use the link above to view SDS, a current list of citations, and other product specific information. IP-western blot protocol: https://www.bethyl.com/content/protocol_IP_WB

This document certifies that this product has met all of the quality control standards defined by Bethyl Laboratories, Inc.
Eric McIntush, PhD | Chief Scientific Officer Date: June 21, 2019



Detection of human Endophilin A2 by western blot of immunoprecipitates. *Samples:* Whole cell lysate (1 mg for IP, 20% of IP loaded) from HeLa cells. *Antibodies:* Affinity purified rabbit anti-Endophilin A2 antibody A302-350A used for IP at 3 µg/mg lysate. Endophilin A2 was also immunoprecipitated by rabbit anti-Endophilin A2 antibody A302-349A, which recognizes an upstream epitope. For blotting immunoprecipitated Endophilin A2, A302-349A was used at 1 µg/ml. *Detection:* Chemiluminescence with an exposure time of 10 seconds.