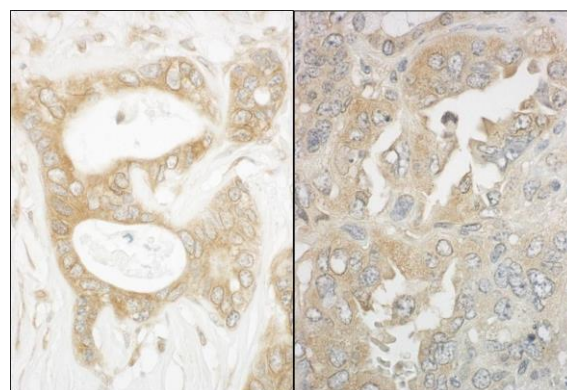


Detection of human and mouse EB1 by western blot (h&m) and immunoprecipitation (h). *Samples:* Whole cell lysate from HeLa (5, 15 and 50 μ g for WB; 1 mg for IP, 20% of IP loaded), HEK293T (T; 50 μ g), and mouse NIH 3T3 (M; 50 μ g) cells. *Antibodies:* Affinity purified rabbit anti-EB1 antibody A302-333A used for WB at 0.04 μ g/ml (A) and 1 μ g/ml (B) and used for IP at 10 μ g/mg lysate. EB1 was also immunoprecipitated by rabbit anti-EB1 antibodies A302-331A and A302-332A, which recognize upstream epitopes. *Detection:* Chemiluminescence with exposure times of 10 seconds (A) and 3 seconds (B).



Detection of human and mouse EB1 by immunohistochemistry. *Sample:* FFPE section of human ovarian carcinoma (left) and mouse teratoma (right). *Antibody:* Affinity purified rabbit anti-EB1 (Cat. No. A302-333A) used at a dilution of 1:200 (1 μ g/ml). *Detection:* DAB